


Spatial Enablement and the Response to Climate Change and the Millennium Development Goals

Prof. Stig Enemark
 President
 Aalborg University, Denmark

18th UNITED NATIONS REGIONAL CARTOGRAPHIC CONFERENCE
 FOR ASIA AND PACIFIC
 BANGKOK, 26-30 OCTOBER 2009

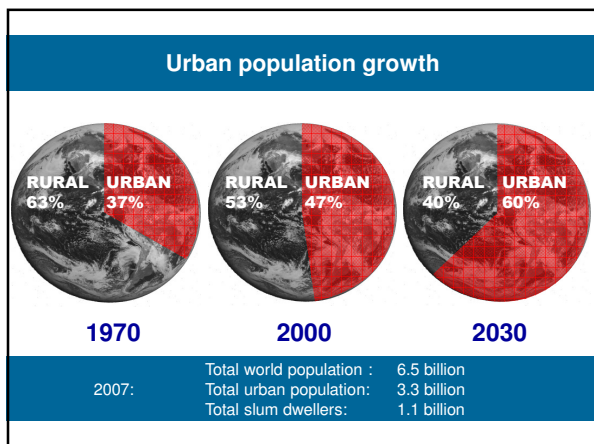
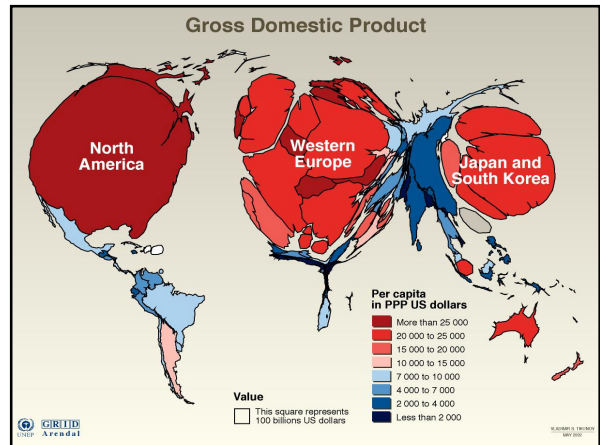
Outline of presentation

- The global agenda**
 - Facing the Millennium Development Goals
- Land governance**
 - Managing land rights, restrictions, and responsibilities
- Spatially enabled government**
 - The significant role of the cadastre
- Climate change**
 - Land administration in support of climate change adaptation
- Natural disaster prevention and management**
 - Land administration in support of natural disaster risk management

The Millennium Development Goals

- Goal 1: Eradicate extreme poverty and hunger
- Goal 2: Achieve universal primary education
- Goal 3: Promote gender equality and empower women
- Goal 4: Reduce child mortality
- Goal 5: Improve maternal health
- Goal 6: Combat HIV/AIDS, malaria and other diseases
- Goal 7: Ensure environmental sustainability
- Goal 8: Develop a Global Partnership for Development**

The framework includes 18 targets and 48 indicators enabling the ongoing monitoring of annual progress



It is all about:

People, human rights, engagement and dignity
Politics, land policies and good governance
Places, shelter, land rights, and natural resources
and Power, decentralisation and empowerment



Outline of presentation

The global agenda

- Facing the Millennium Development Goals

Land governance

- Managing land rights, restrictions, and responsibilities

Spatially enabled government

- The significant role of the cadastre

Climate change

- Land administration in support of climate change adaptation

Natural disaster prevention and management

- Land administration in support of natural disaster risk management

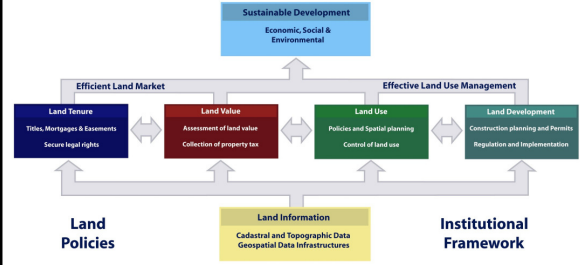
Land governance

Land governance is about the policies, processes and institutions by which land, property and natural resources are managed.

This includes decisions on access to land; land rights; land use; and land development.

Land governance is about determining and implementing sustainable land policies.

A global land management perspective



Sustainable Development
Economic, Social & Environmental

Efficient Land Market

Effective Land Use Management

Land Policies

Land Information
Cadastral and Topographic Data
Geospatial Data Infrastructures

Institutional Framework

LAS provide the infrastructure for implementation of land policies and land management strategies in support of sustainable development.

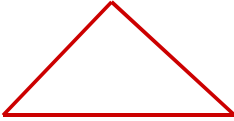
Interests in land

Land administration systems are the basis for conceptualising rights, restrictions and responsibilities related to people, policies and places.

Rights:
Registration and security of tenure positions

Responsibilities:
Social, ethical commitment to environmental sustainability and good husbandry

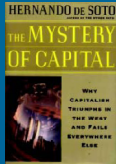
Restrictions:
Planning and control of land-use and land development



The increasing role of property rights

"Civilised living in market Economies is not simply due to greater prosperity but to the order that formalised property rights bring"


Hernando de Soto - 1993



Continuum of rights (GLTN-agenda)

From: illegal or informal rights

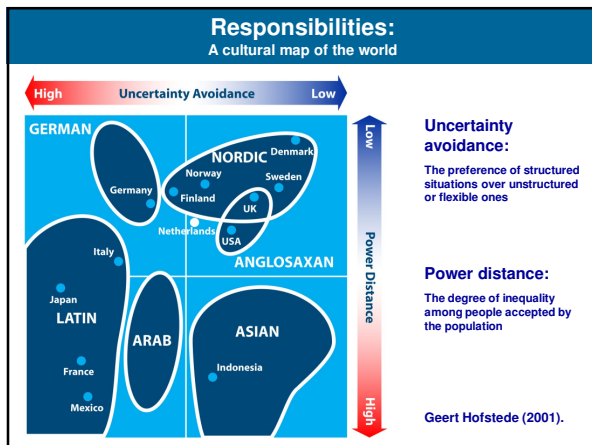
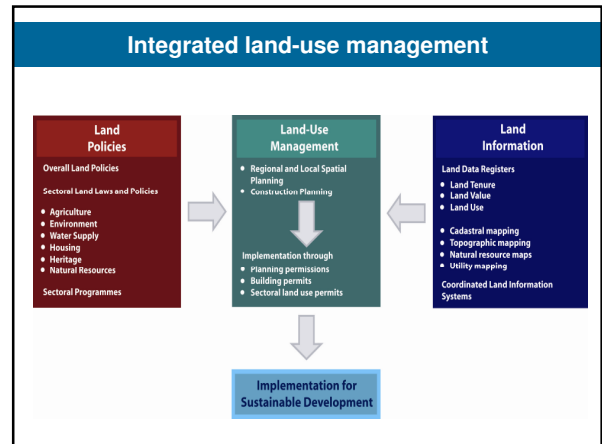
To: legal or formal rights



Property Restrictions

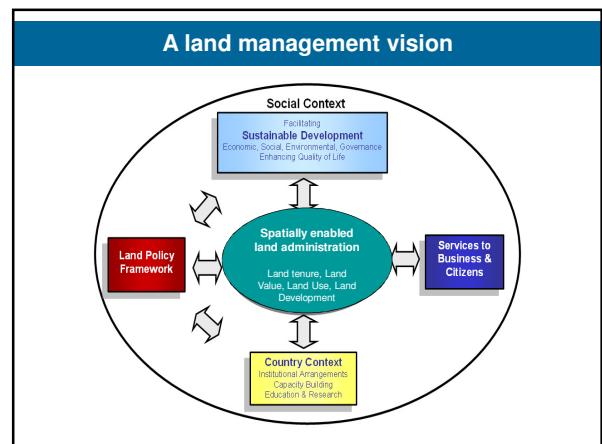
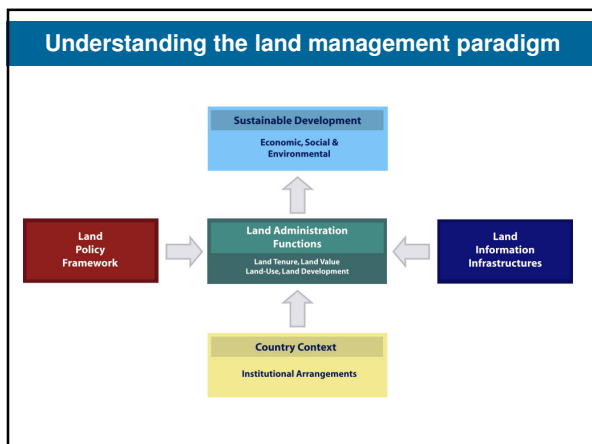
- two conflicting approaches

- **The free market approach** (current debate in the US)
 - Land owners should be obligated to no one and should have complete domain over their land.
 - The role of government to take over, restrict, or even regulate its use should be non-existent or highly limited.
 - Planning restrictions should only be imposed after compensation for lost land development opportunities
- **The central planning approach** (European perspective)
 - The role of democratic government include planning and regulating land systematically for public good purposes.
 - A move **from** every kind of land use being allowed unless it was forbidden **to** every change of land use is forbidden unless it is permitted and consistent with adopted planning regulations and restrictions.



Outline of presentation

- The global agenda
 - Facing the Millennium Development Goals
- Land governance
 - Managing land rights, restrictions, and responsibilities
- Spatially enabled government**
 - The significant role of the cadastre
- Climate change
 - Land administration in support of climate change adaptation
- Natural disaster prevention and management
 - Land administration in support of natural disaster risk management



Place matters

Everything happens somewhere

If we can understand more about the nature of “place” where things happen, and the impact on the people and assets on that location, we can plan better, manage risk better, and use our resources better.

“Heading toward spatial enabled society”

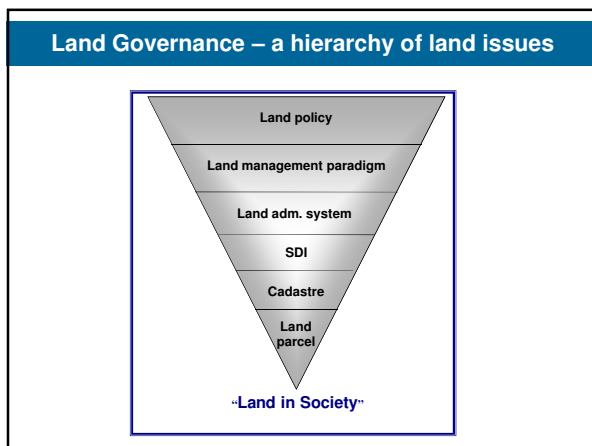
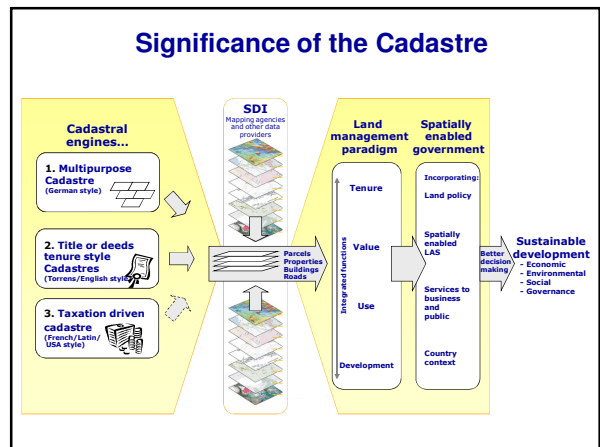
Institutional Challenges

- There are a range of stakeholder interests
This includes Ministries/Departments such as:
Justice; Taxation; Planning; Environment; Transport; Agriculture; Housing; Interior (regional and local authorities); Utilities; and civil society interests such as businesses and citizens.
- Creating awareness of the benefits of developing a shared platform for Integrated Land Information Management takes time and patience.
- **Mapping/Cadastral Agencies have a key role to play**

Spatially Enabled Government

A spatially enabled government organises its business and processes around “place” based technologies, as distinct from using maps, visuals, and web-enablement.

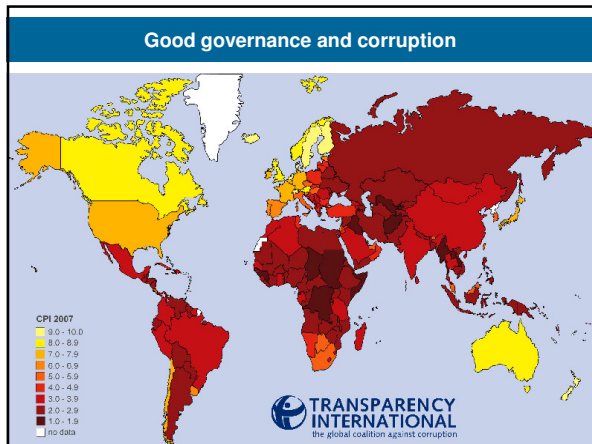
The technical core of Spatially Enabling Government is the **spatially enabled cadastre**.



Good governance is:

- **Sustainable and locally responsive:** It balances the economic, social, and environmental needs of present and future generations, and locates its service provision at the closest level to citizens.
- **Legitimate and equitable:** It has been endorsed by society through democratic processes and deals fairly and impartially with individuals and groups providing non-discriminatory access to services.
- **Efficient, effective and competent:** It formulates policy and implements it efficiently by delivering services of high quality
- **Transparent, accountable and predictable:** It is open and demonstrates stewardship by responding to questioning and providing decisions in accordance with rules and regulations.
- **Participatory and providing security and stability:** It enables citizens to participate in government and provides security of livelihoods, freedom from crime and intolerance.
- **Dedicated to integrity:** Officials perform their duties without bribe and give independent advice and judgements, and respects confidentiality. There is a clear separation between private interests of officials and politicians and the affairs of government.

Adapted from FAO, 2007



Outline of presentation

The global agenda

- Facing the Millennium Development Goals

Land governance

- Managing land rights, restrictions, and responsibilities

Spatially enabled government

- The significant role of the cadastre

Climate change

- Land administration in support of climate change adaptation

Natural disaster prevention and management

- Land administration in support of natural disaster risk management

Facing the new challenges

Focusing on land Governance and achieving the MDGs, also includes facing the big challenges of the new millennium:

- Climate change
- Food shortage
- Energy scarcity
- Urban growth
- Environmental degradation
- Natural disasters
- Global financial crisis

All these challenges relate to governance and management of land
Land professionals play a key role

Climate change

"Climate change is the defining challenge of our time"

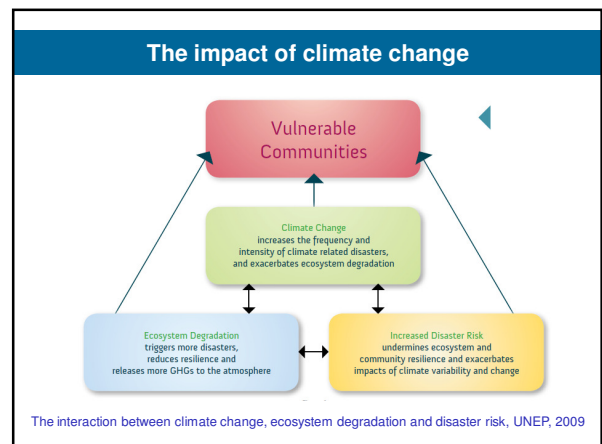
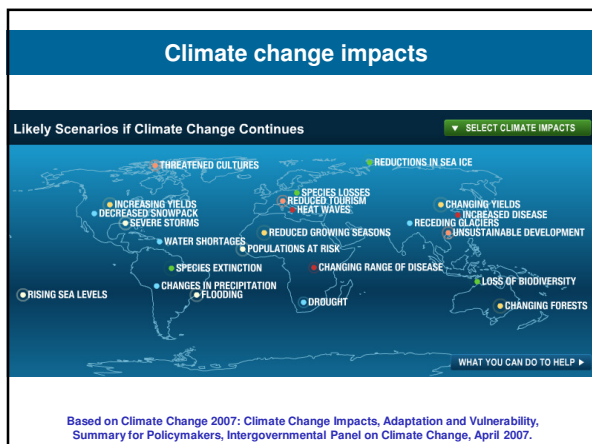
Combining the impacts of climate change with the current global financial crisis we risk that all the efforts to meet the MDGs will be rolled back. Those that contributed the least to this planetary problem continue to be disproportionately at risk.

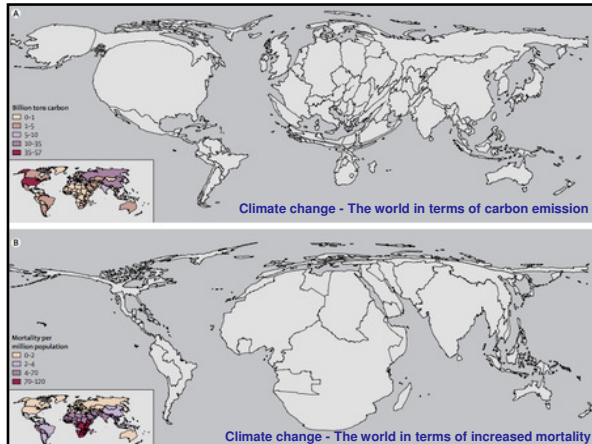
Ban Ki-moon, UN secretary general

"Climate change also provides a range of opportunities"

Prevention of climate change can be greatly enhanced through better land-use planning and building codes so that cities keep their ecological footprints to a minimum and make sure that their residents, especially the poorest, are protected as best as possible against disaster.

Anna Tibajuka, Executive Director, UN-Habitat





Climate Change

No matter the inequity between the developed and developing world in terms of emissions and climate consequences, there is a need to develop relevant means of adaptation to climate change both in the rich and the poorer countries.

Sustainable Land Administration Systems should serve as a basis for climate change mitigation and adaptation as well as prevention and management of natural disasters.

- Incorporating climate change into current land policies
- Adopting standards for energy use, emissions, carbon stock potential,.....
- Identifying prone areas (sea level rise, drought, flooding, fires...)
- Controlling access to land and the use of land in relation to climate change and disaster risks
- Controlling building standards and emissions in relation to climate change
- Improving resilience of existing ecosystems vulnerable to climate change

Geo-information management

...creates a strong foundation

Source: ESRI

...for sustainable action

Outline of presentation

The global agenda

- Facing the Millennium Development Goals

Land governance

- Managing land rights, restrictions, and responsibilities

Spatially enabled government

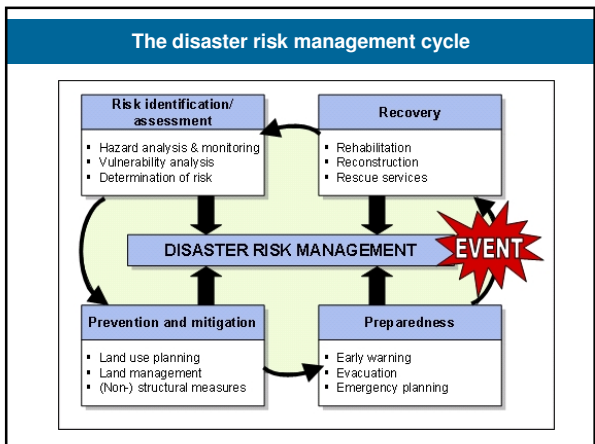
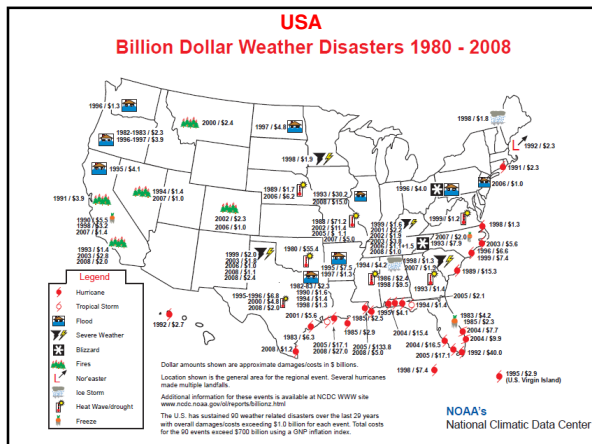
- The significant role of the cadastre

Climate change

- Land administration in support of climate change adaptation

Natural disaster prevention and management

- Land administration in support of natural disaster risk management



Disaster risk prevention and management

- Humanitarian actors are often confronted with land issues when undertaking emergency shelter and protection activity.
- The information on the people to land relationship is crucial in the immediate post disaster situation.
- Disaster risks must be identified as area zones in the land-use plans and the land information system with the relevant risk assessment and information attached.
- Measures for disaster risk prevention and management should be integrated in the land administration systems

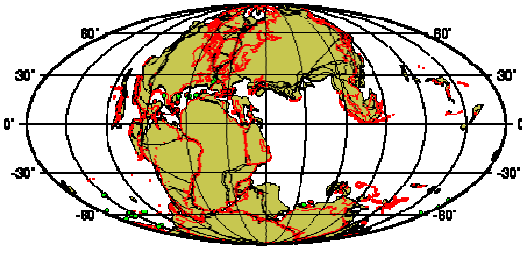
Post Disaster Land Guidelines developed by FAO/UN-Habitat

Building the capacity

<b style="background-color: #0056b3; color: white; padding: 2px;">Good Governance <ul style="list-style-type: none"> Participation Rule of law Transparency Responsiveness Consensus orientated Equity and inclusiveness Effectiveness and efficiency Accountability 	<div style="background-color: #90ee90; border: 2px solid black; border-radius: 50%; width: 60px; height: 60px; display: flex; align-items: center; justify-content: center; margin: 0 auto;"> <p style="font-size: 8px; text-align: center; margin: 0;">Key for sustainable development and disaster risk reduction</p> </div>	<b style="background-color: #0056b3; color: white; padding: 2px;">Capacity Building <ul style="list-style-type: none"> Training activities (Disaster) education programs Public information Technical assistance Improvement of organizational abilities Dissemination of knowledge Improvement of infrastructure
--	---	--

"While many people are aware of the terrible impact of disasters throughout the world, few realise this is a problem that we can do something about"
Kofi Annan, 2004

Climate Change ...



150 My Reconstruction

We cannot change the Hazard but we can manage the Risk

The role of FIG

FIG intend to play a strong role in building the capacity to design, build and manage Land Governance systems in response to Climate Change and and in support of The Millennium Development Goals

"Building the capacity for taking the land policy agenda forward"

FIG publications



WWW.FIG.NET

The XXIV FIG International Congress 2010

Sydney, Australia - 11 to 16 April 2010



Facing the Challenges – Building the Capacity

HOSTED BY



www.fig2010.com



**Thank you
For your attention**