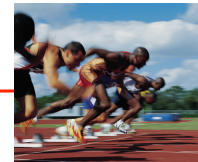




Fédération Internationale des Géomètres
 International Federation of Surveyors
 Internationale Vereinigung der Vermessungsingenieure

**34th FIG General Assembly:
 Agenda Item 22: Membership Issues (Voting Rights)**

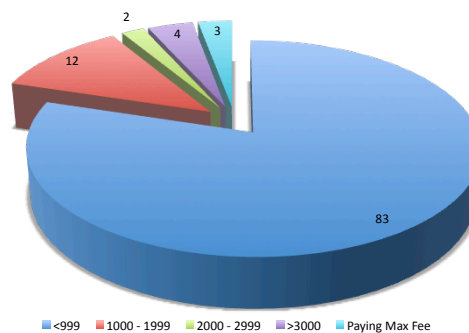
CheeHai TEO
 President
 chteo.surveyor@gmail.com



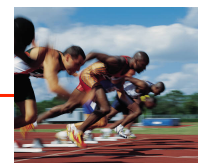
Fédération Internationale des Géomètres
 International Federation of Surveyors
 Internationale Vereinigung der Vermessungsingenieure

After the 2010 General Assembly, the profile of association membership within FIG is as follows -

- 23 – 999 Members
 83 Member Associations
- 1000 – 1999 Members
 12 Member Associations
- 2000 – 2999 Members
 2 Member Associations
- > 3000 Members
 4 Member Associations
- Paying maximum fee
 3 Member Associations



CheeHai TEO
 President
 chteo.surveyor@gmail.com



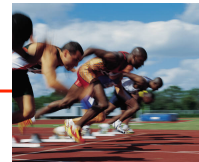


Fédération Internationale des Géomètres
International Federation of Surveyors
Internationale Vereinigung der Vermessungsingenieure

FIG intends to grow its membership and many of these new member associations may invariably be small in size; the profession in some of these countries may be fragmented, represented by a number of national associations. In addition, we may be seeing a consolidation or merger of a number of national associations, usually from more established jurisdictions, and this too must be encouraged.

This proposal to review the voting rights of member associations is timely, the CORE issue is the FUTURE of FIG and in line with the recognition that FIG must keep pace with the times.

*"As new discoveries are made, new truths discovered,
and manners and opinions change with the change
of circumstances, institutions must advance also to
keep pace with the times"*
(Thomas Jefferson)



CheeHai TEO

President

chteo.surveyor@gmail.com



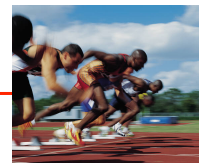
Fédération Internationale des Géomètres
International Federation of Surveyors
Internationale Vereinigung der Vermessungsingenieure

An Idea:

1: 2: 3 System for member associations -

- 1 vote for Member Association with membership of less than 2000 members;
- 2 votes for Member Association with membership of 2000 members or more; and
- 3 votes for Member Association paying the maximum level of membership fees.

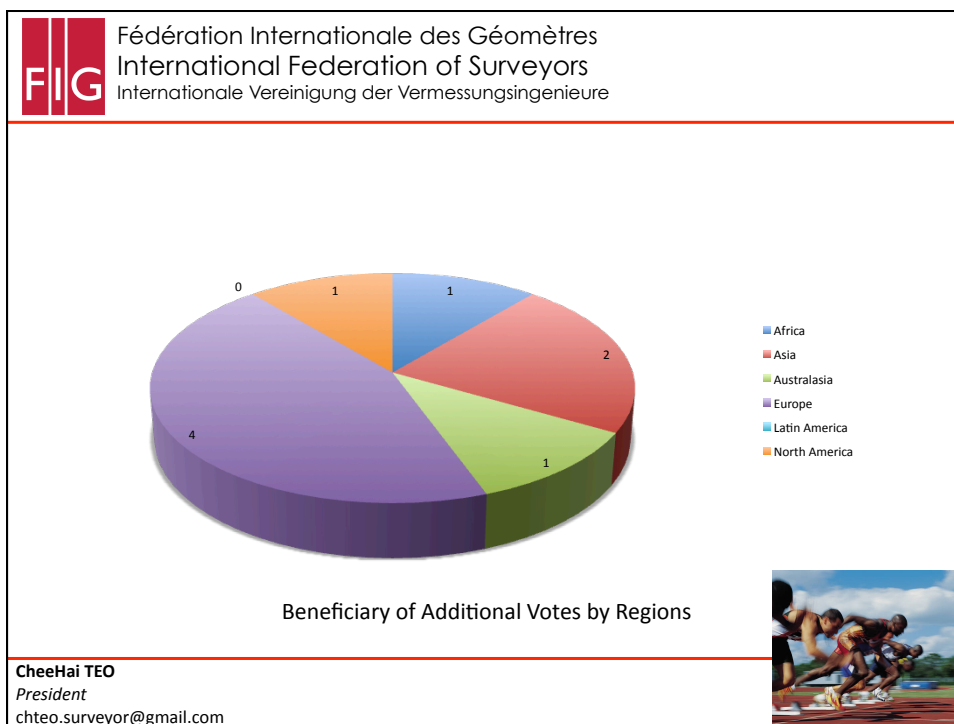
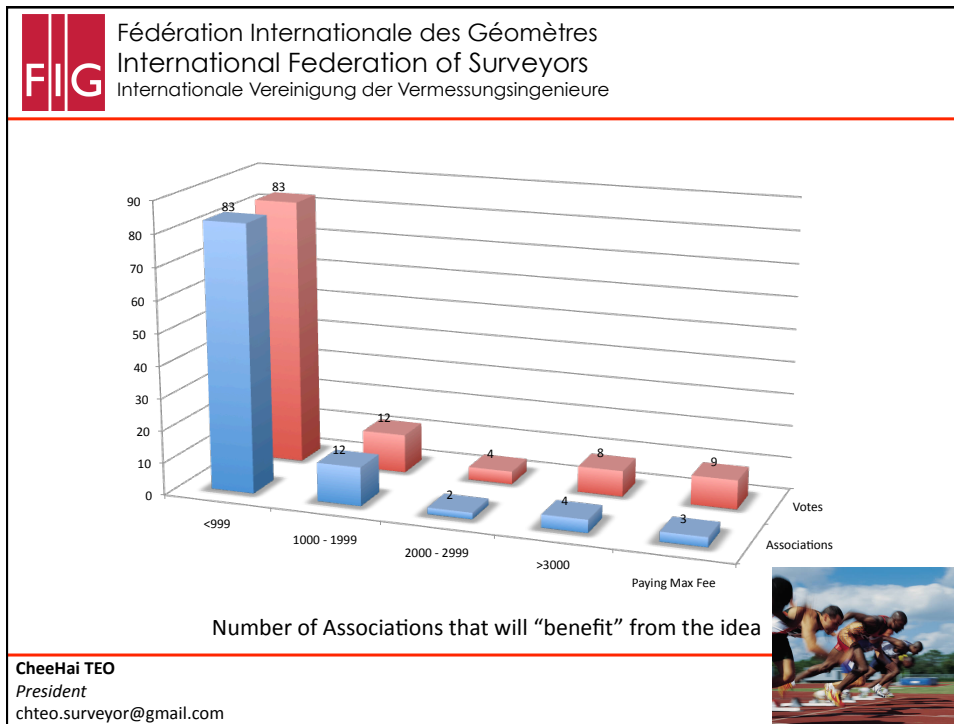
with a vote for Platinum Corporate Members on Working Week or Congress Venue



CheeHai TEO

President

chteo.surveyor@gmail.com



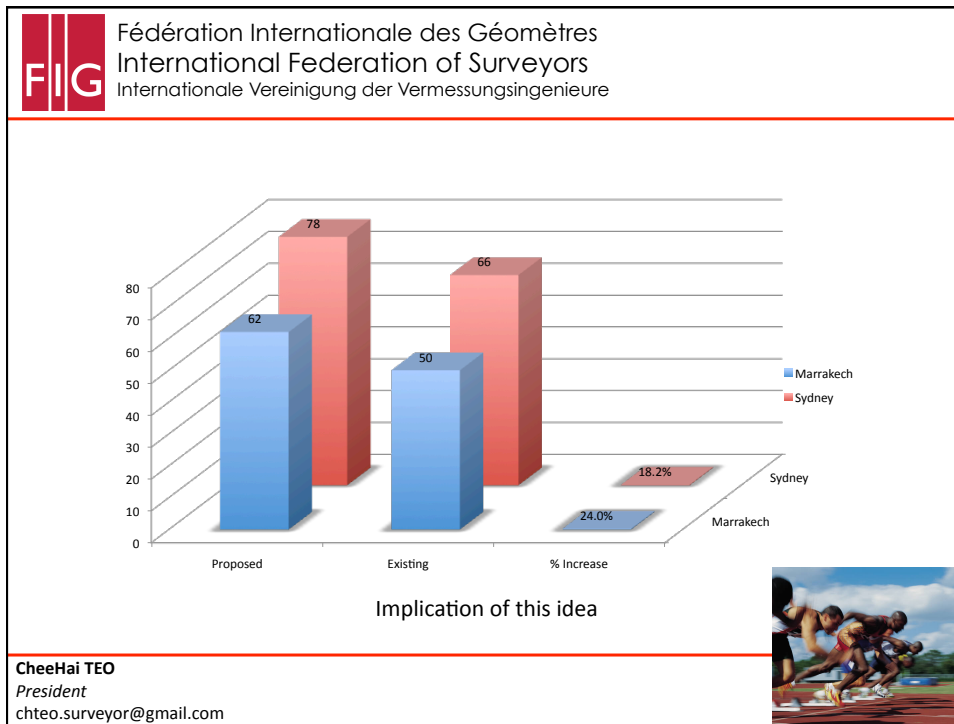


FIG Fédération Internationale des Géomètres
International Federation of Surveyors
Internationale Vereinigung der Vermessungsingenieure

BREAKOUT SESSION ON MEMBERSHIP ISSUES (VOTING RIGHTS)
FRIDAY
11:00 – 12:30, 20th MAY, 2011

CheeHai TEO
President
chteo.surveyor@gmail.com