

The use of GNSS to measure the synchronized movements of the Severn Suspension Bridge's 136m tall support towers and suspension cables.



- Professor Gethin Wyn Roberts
- Dean of Science and Engineering

The University of Nottingham Ningbo, China

- 格辛•温•罗伯茨 教授
- 理工学院院长

The University of Nottingham

China



Malaysia



United Kingdom



University of Nottingham Ningbo, China 宁波诺丁汉大学

Teaching and Language Centre
教学与语言中心

Main Building
行政楼

Student Services & Computing Centre
学生服务与计算机中心

Staff Hotel &
Restaurants
教师公寓及餐厅

Student
Residences
学生宿舍

Sports Centre
体育馆

Centre for Sustainable Energy Technology
可持续能源与技术研究中心





Outline of presentation

- The application of GPS to structural monitoring
- Principles and limitations
- Application in the context of the M48 Severn Bridge
- Results – in particular the support towers
- Next steps



The application of GPS to structural monitoring

- Gives synchronised position at precise times
- Hence can monitor movement (displacement) and frequencies
- Advantages for remote locations, with a very well-defined non-ground based reference point (i.e. satellite geometry)



The University of
Nottingham

UNITED KINGDOM • CHINA • MALAYSIA

The application of GPS to structural monitoring

- Previous work on Humber, Forth, Avonmouth, Millennium, Pusan
- Technique now widely published



Principles and limitations

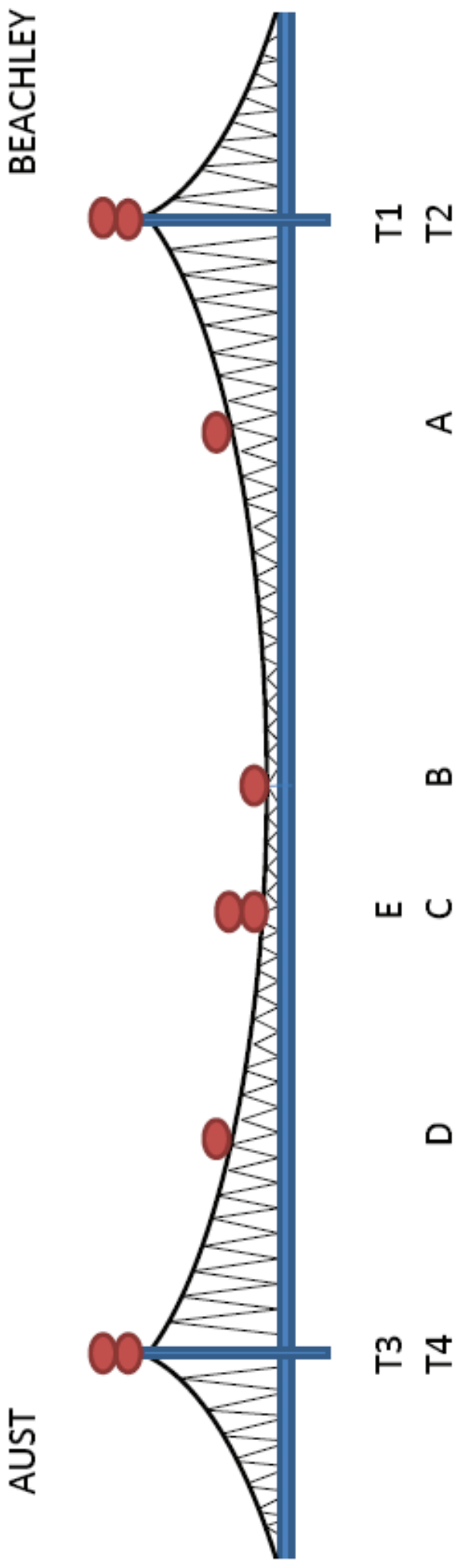
- Can be used to transmit “real-time” to remote monitors
- Currently post-processed for our tests
- Needs to have local reference stations
- Equipment is not “cheap”



Application to M48 – Severn Bridge

- Precise 3D coordinates at 20Hz
- 5 locations on bridge and top of 4 towers – 9 locations total. 2 Reference Stations
- 9th – 12th March and 18th March
- Vast amount of data, Millions of data points

- Schematic of GPS Antenna Locations

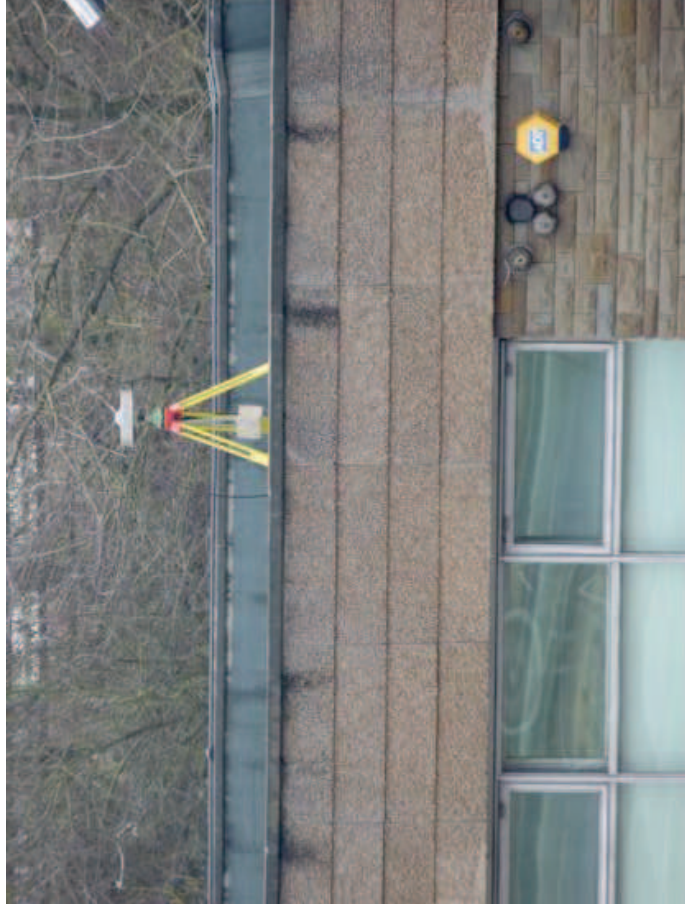




The University of
Nottingham

UNITED KINGDOM • CHINA • MALAYSIA

- Reference Stations





The University of
Nottingham

UNITED KINGDOM • CHINA • MALAYSIA

- T2 Locations and Cable Antenna





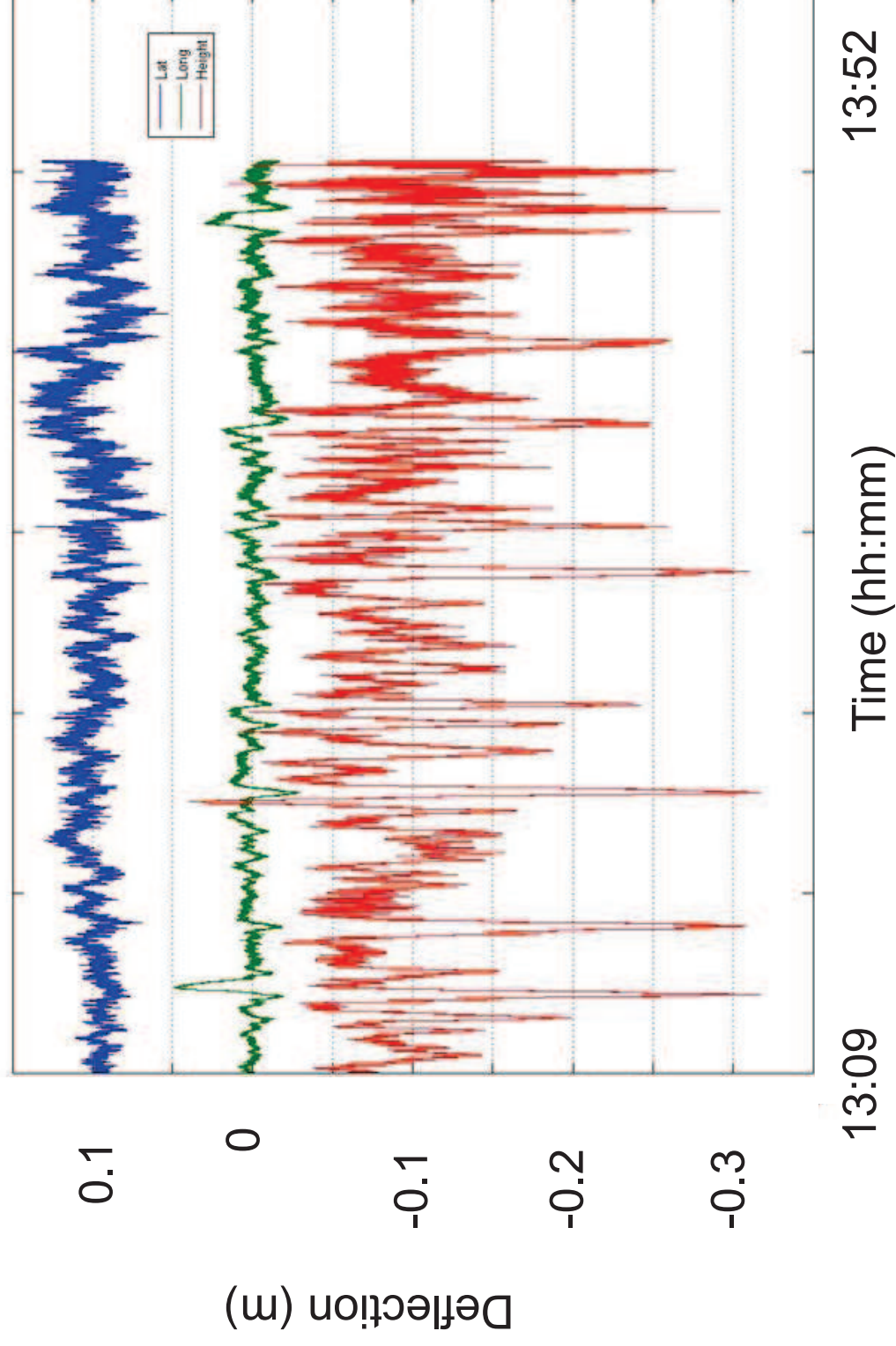
The University of
Nottingham

UNITED KINGDOM • CHINA • MALAYSIA

Results

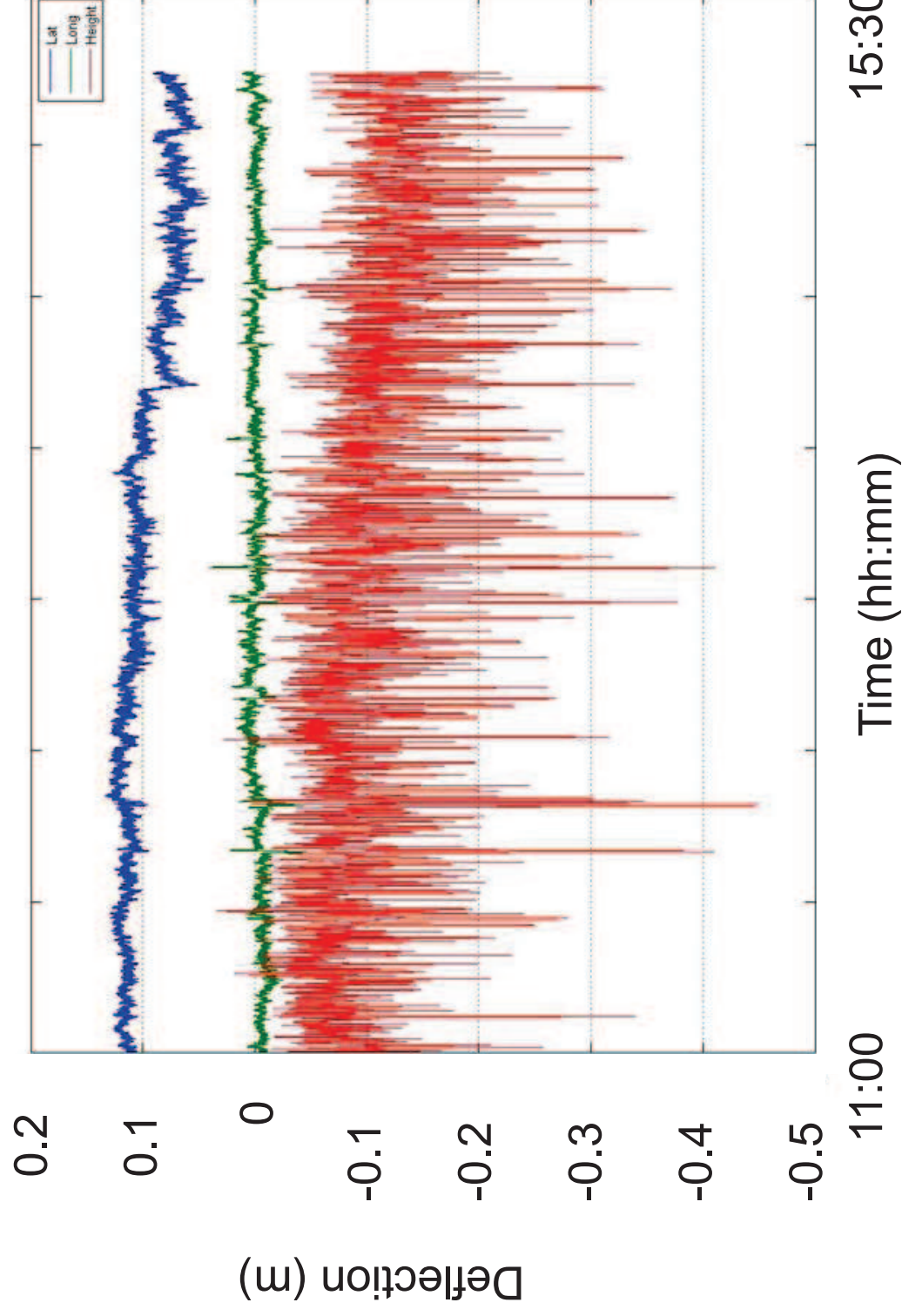


- Deflections at A 13:09:45 to 13:51:55



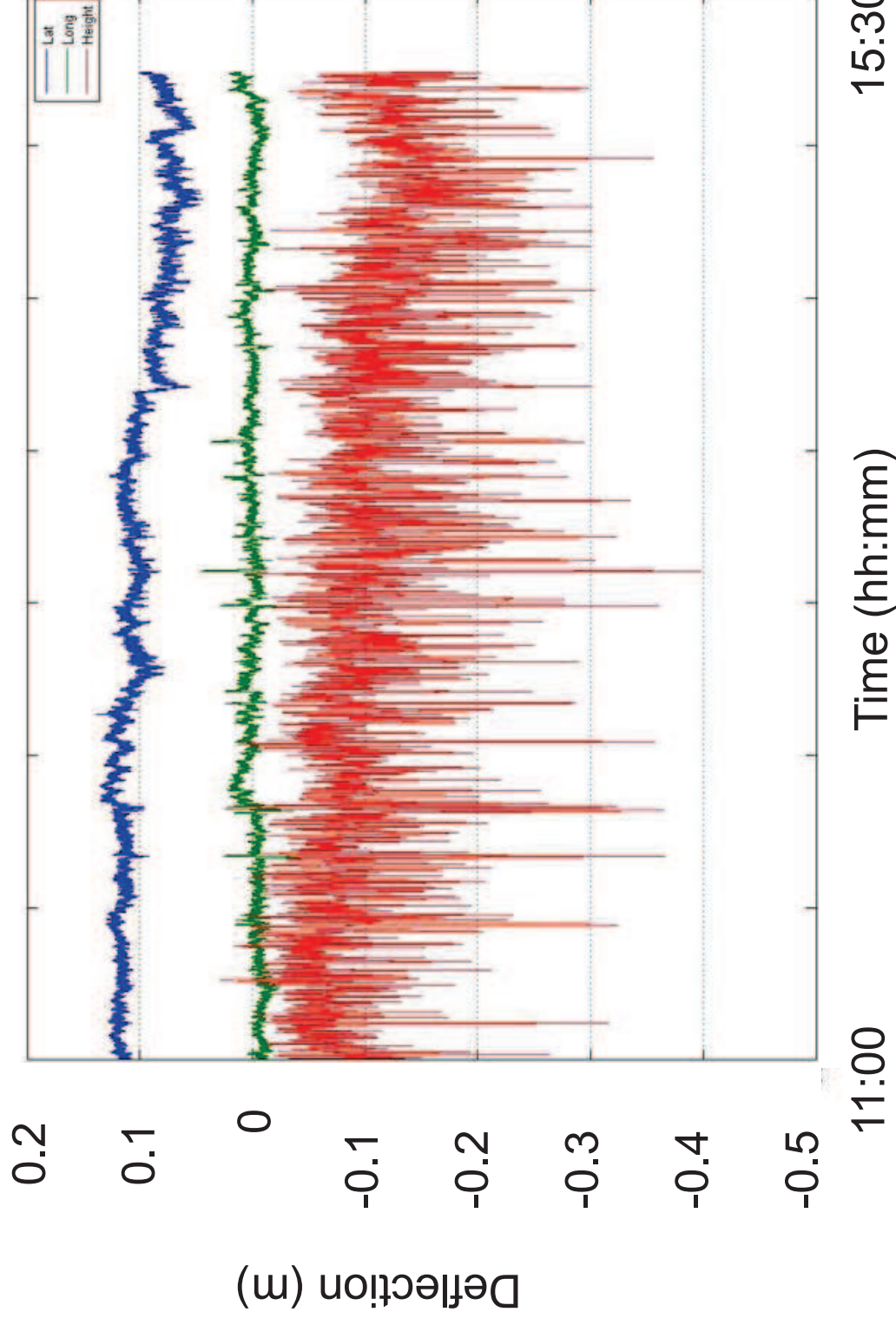


- Deflections at B 11:00:00 to 15:30:00



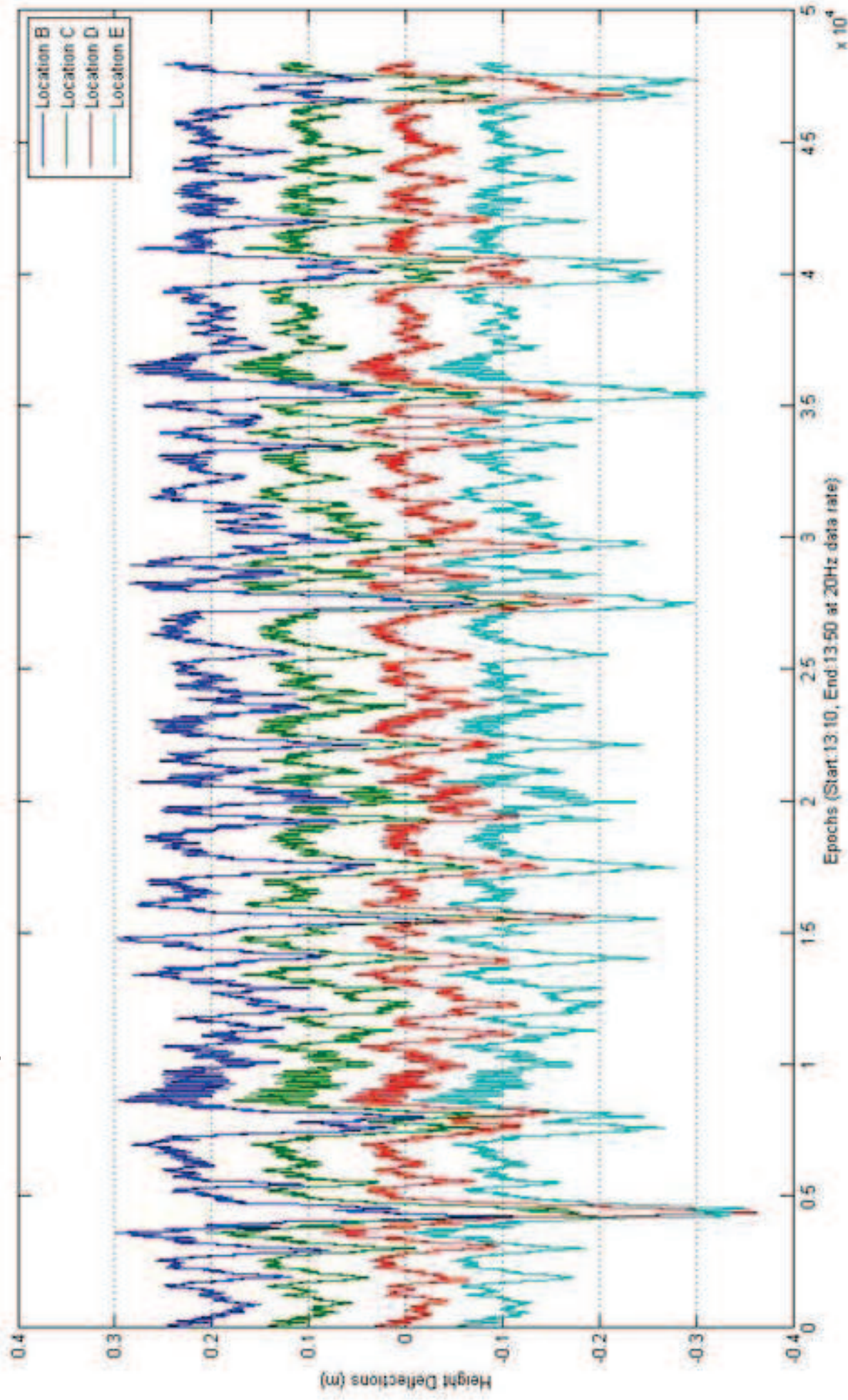


- Deflections at C 11:00:00 to 15:30:00



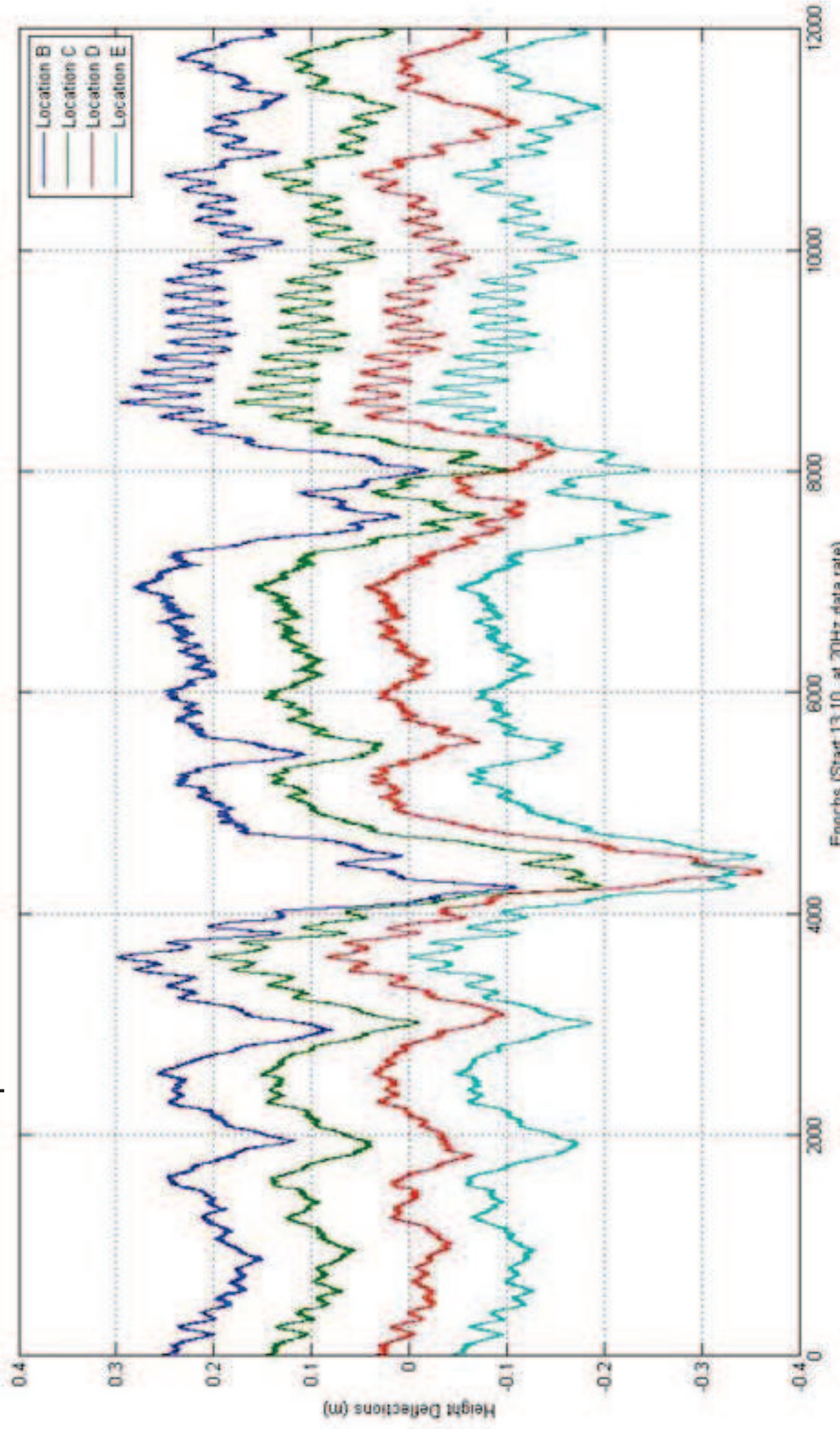


40 minute period



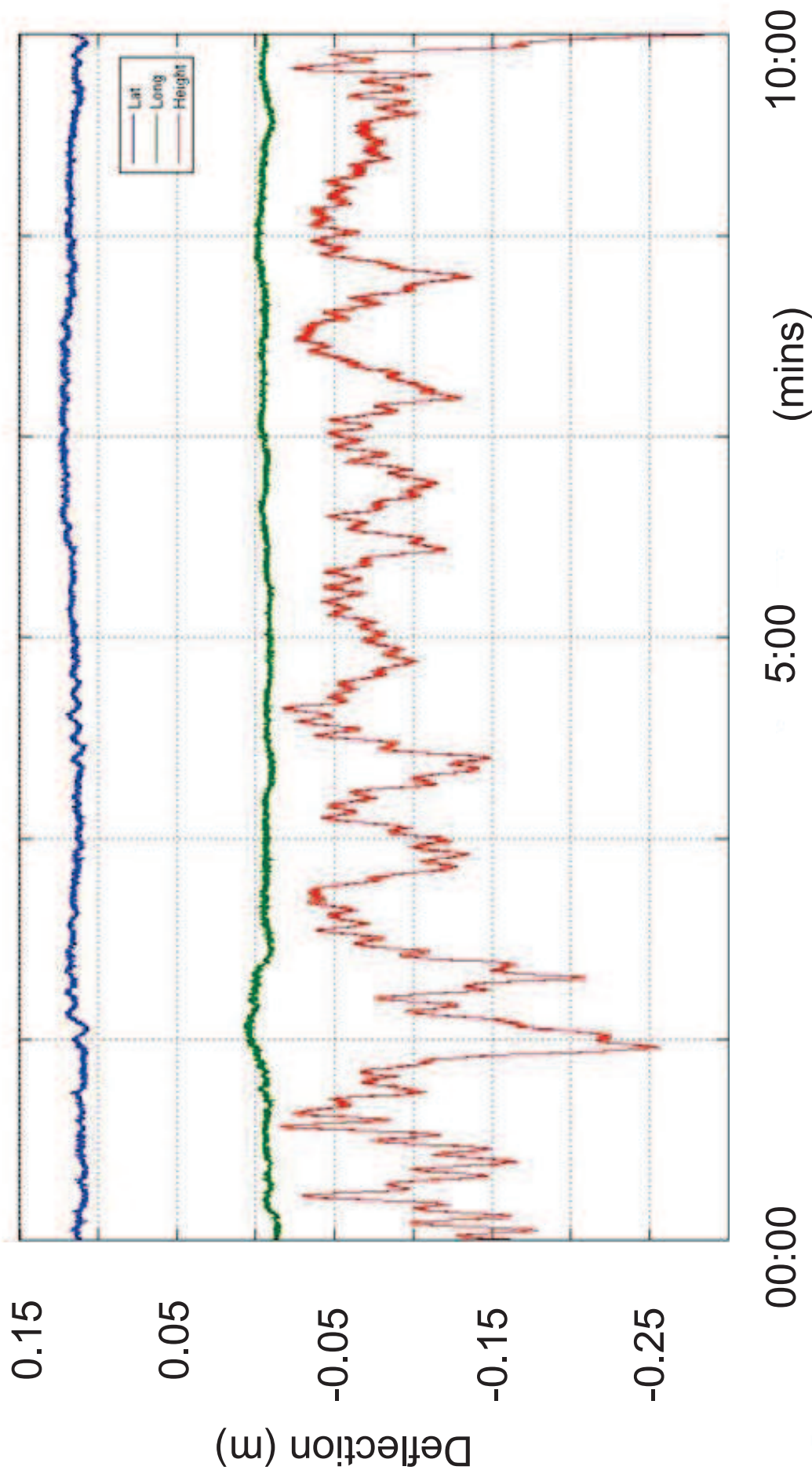


10 minute period



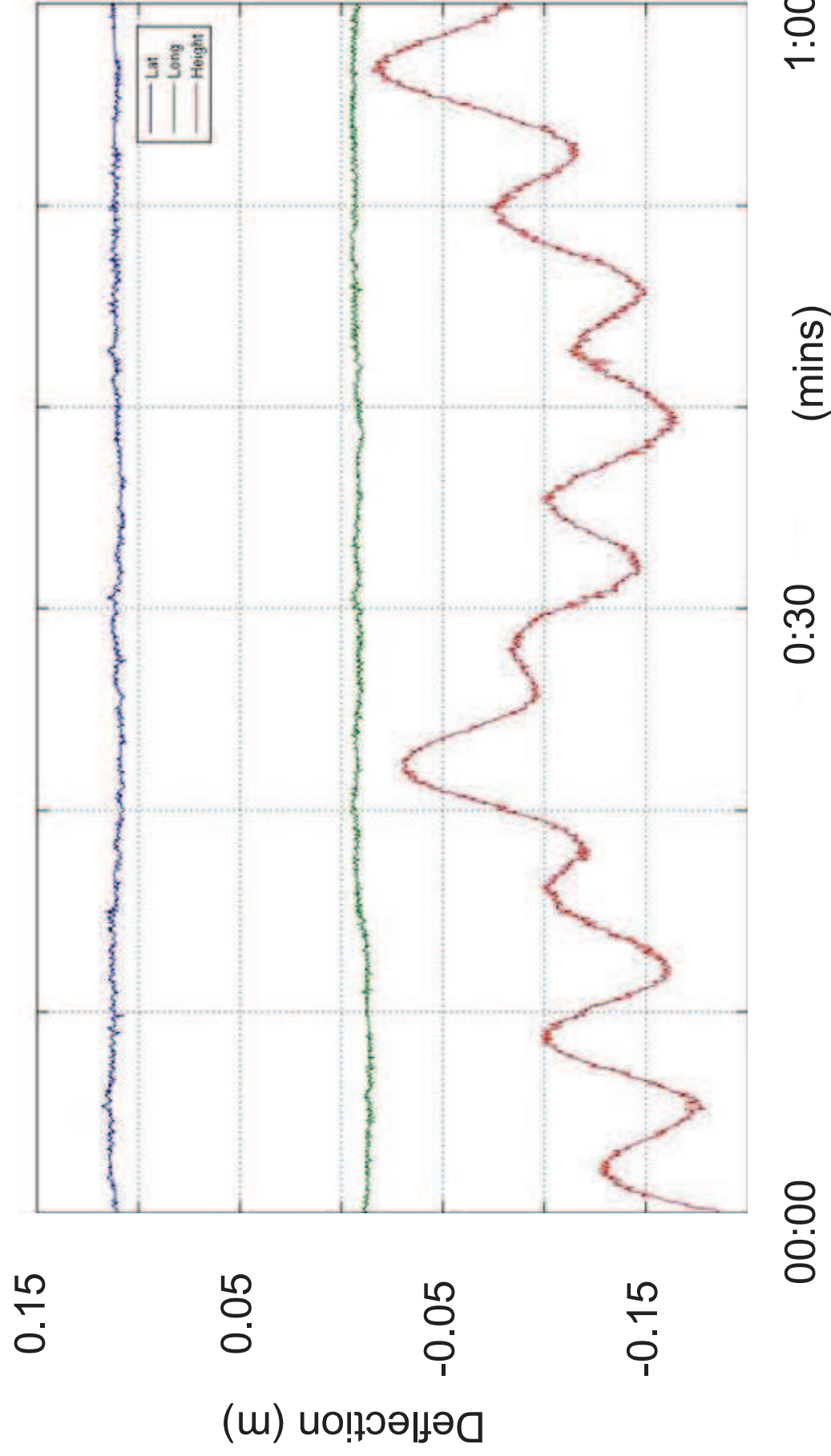


- Deflections at B 10 min period



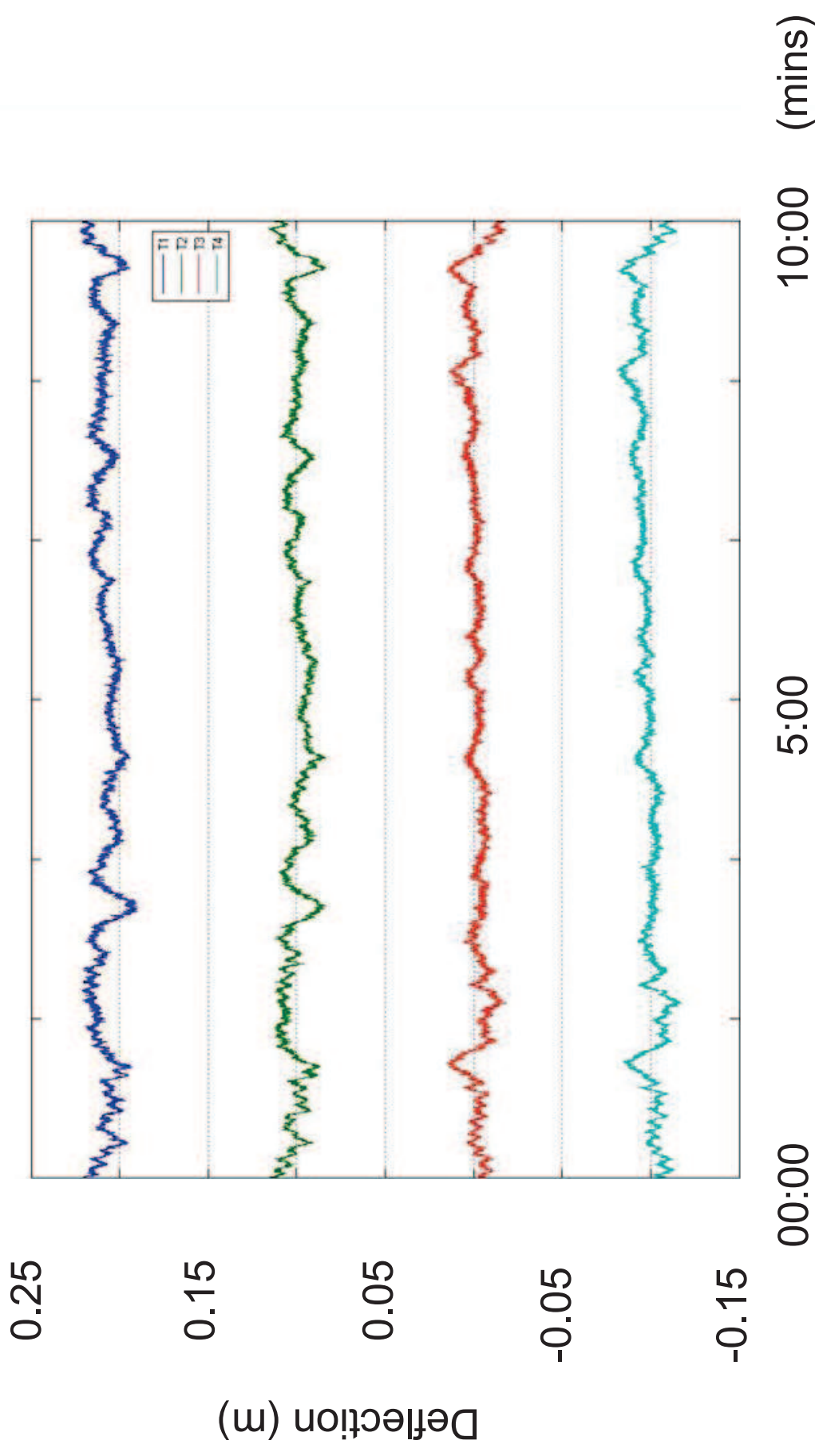


- Deflections at B 1 min period



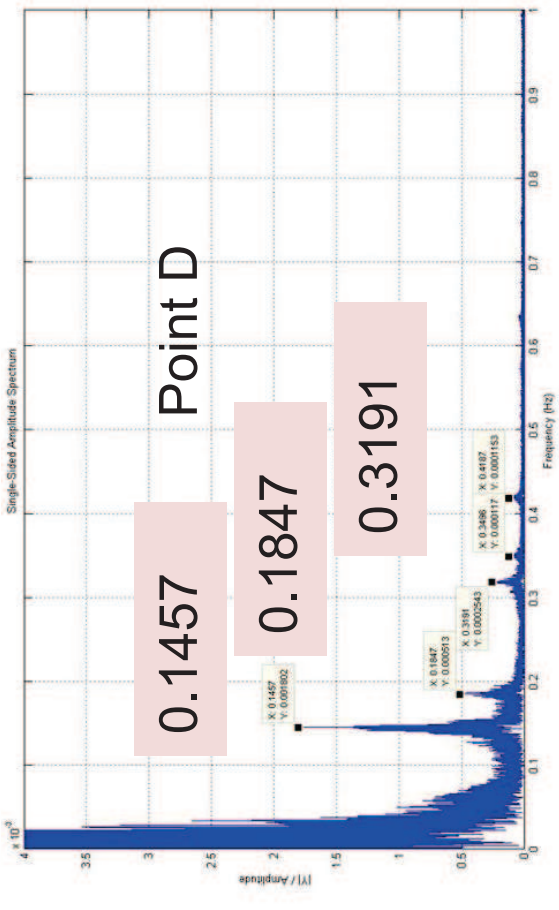
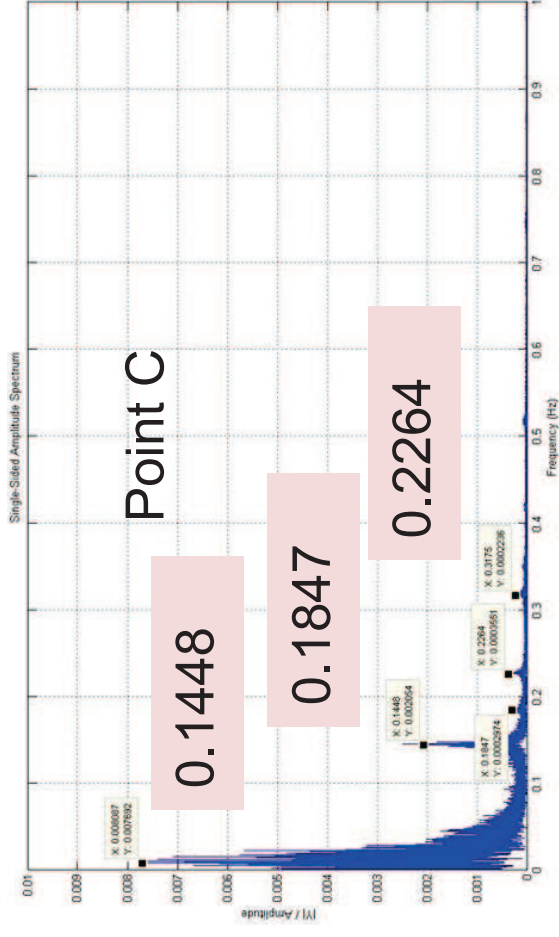
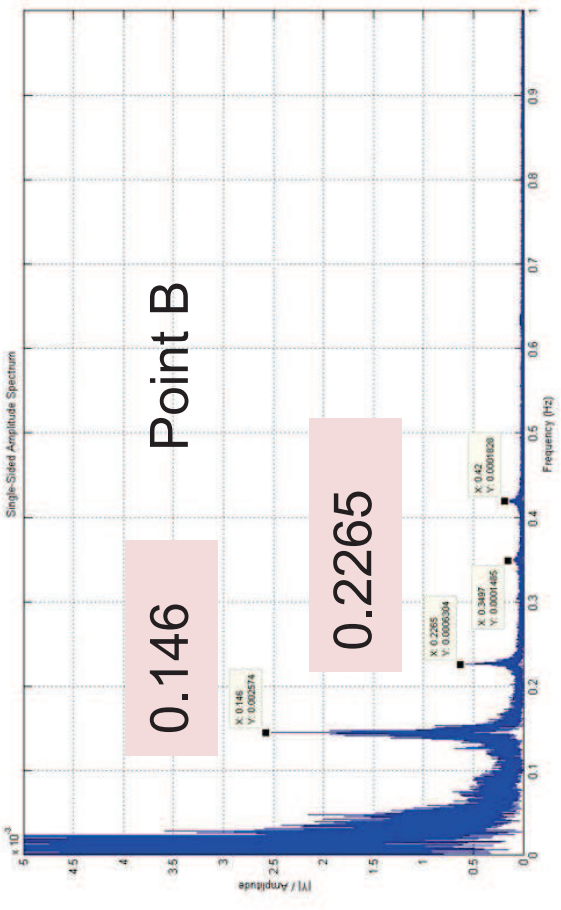
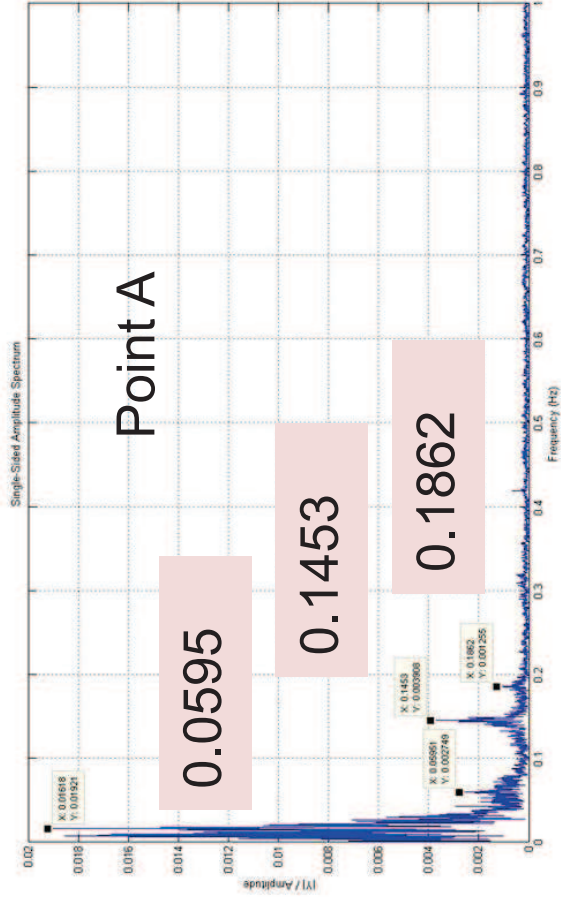


- Deflections at all Towers, longitudinal 10 min period

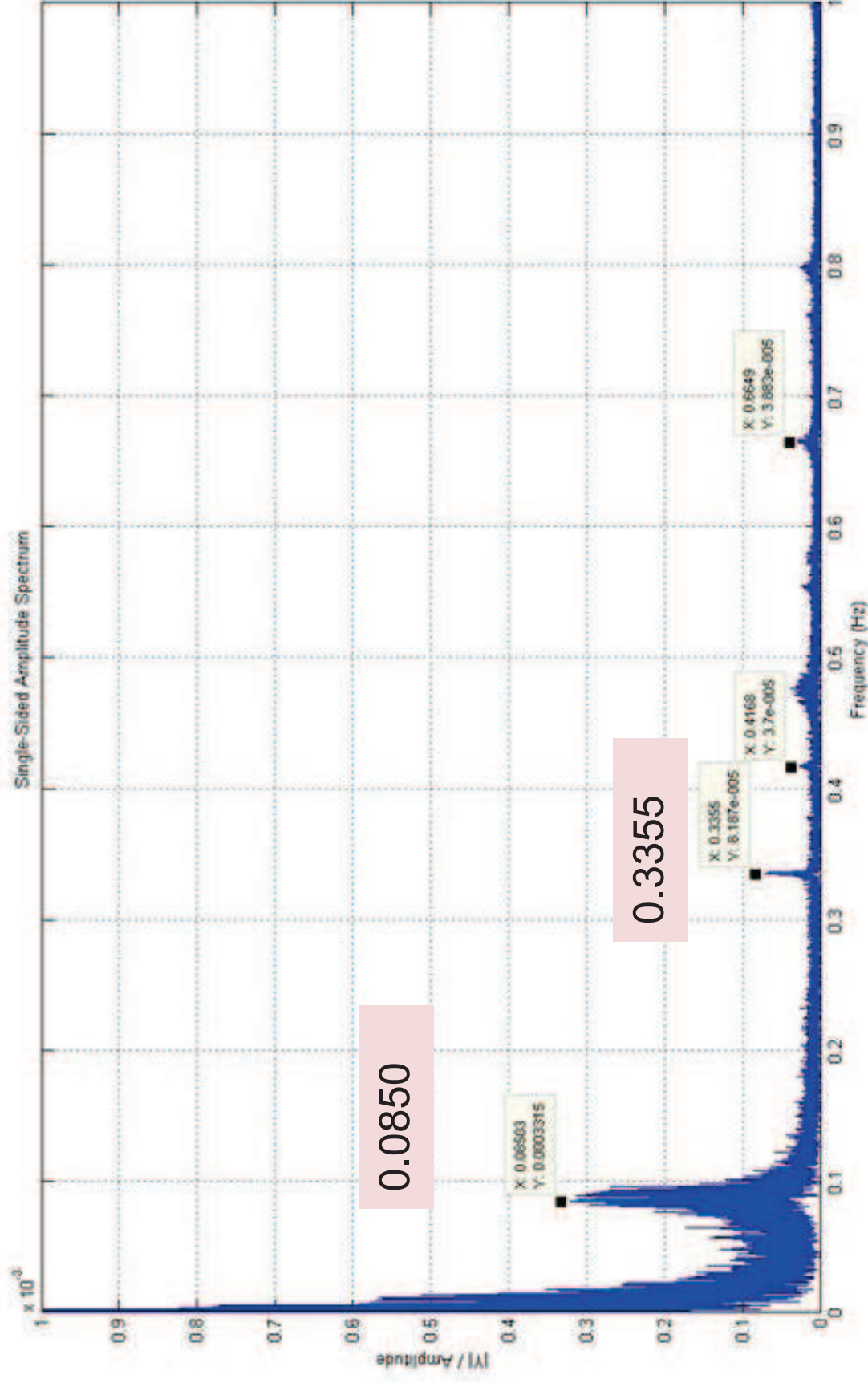




- Frequency response, vertical

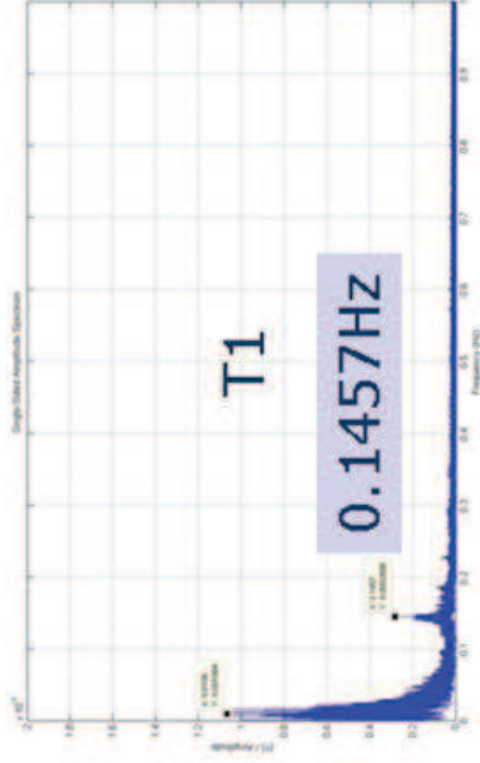


- Frequency response, lateral Point B



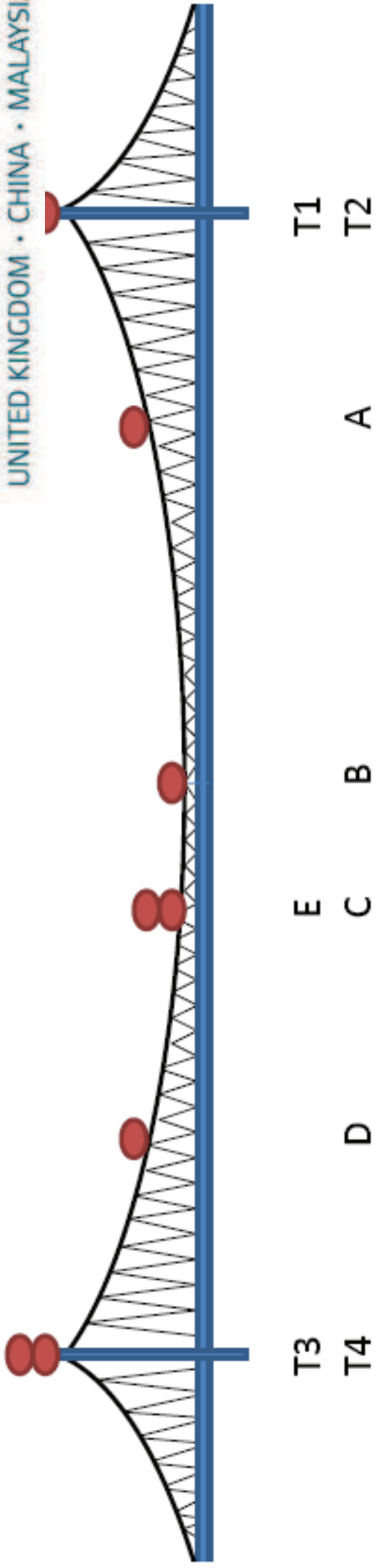


- Frequency response, Towers long





AUST



vertical

longitudinal

Position	A	B	C	D	E	T1	T2	T3	T4
Freq	0.0595								
Hz	0.1453	0.146	0.1448	0.1457	0.1457	0.1457	0.1455	0.1461	0.1457
	0.1862		0.1847	0.1847					
		0.2265	0.2264		0.2264				



Conclusions

- Synchronisation of towers and deck/cables
- Use for future models and designs
- Long term monitoring required
- Network RTK



Thank you

Xie Xie