

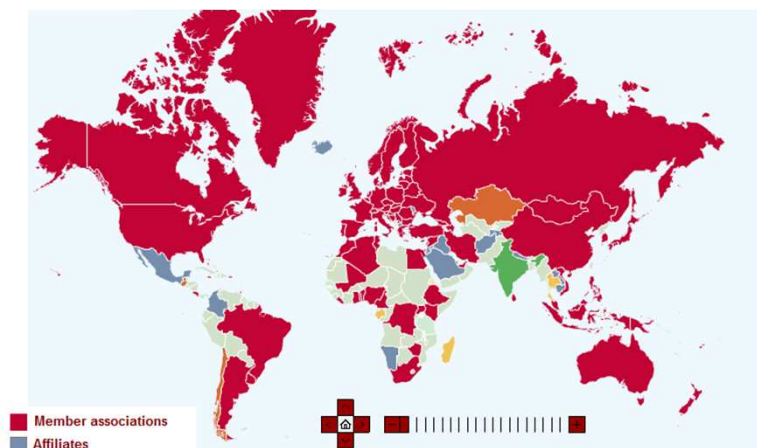


A new era: Dynamic Information Management

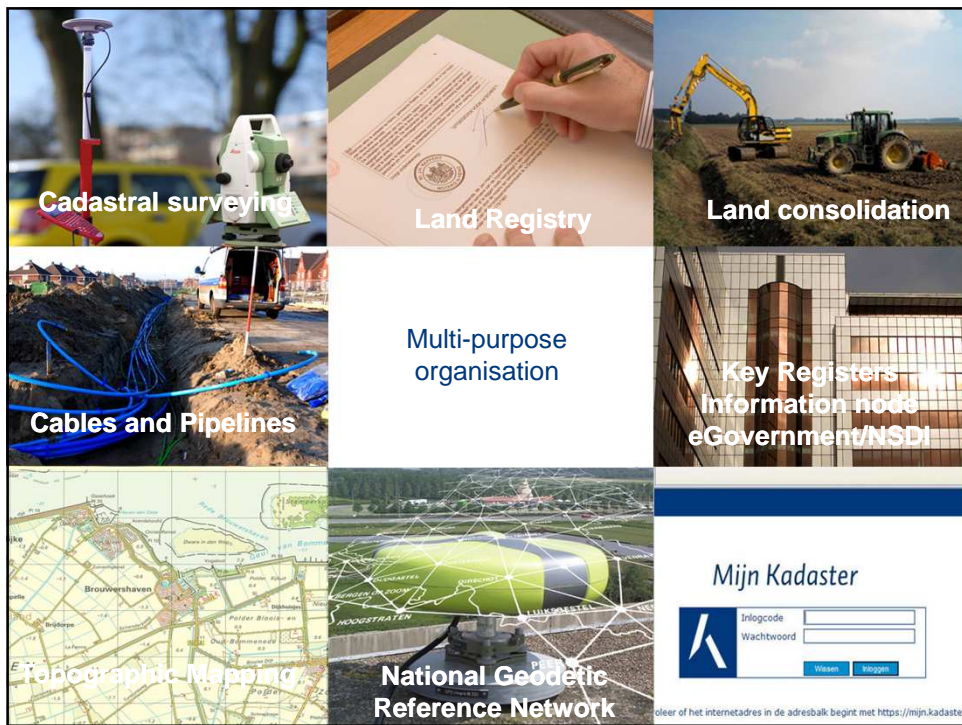
Professional and Institutional Developments

Kees de Zeeuw *MSc*
Director Kadaster International
The Netherlands

Affiliate member's perspective



45 affiliates from 43 countries (December 2014)



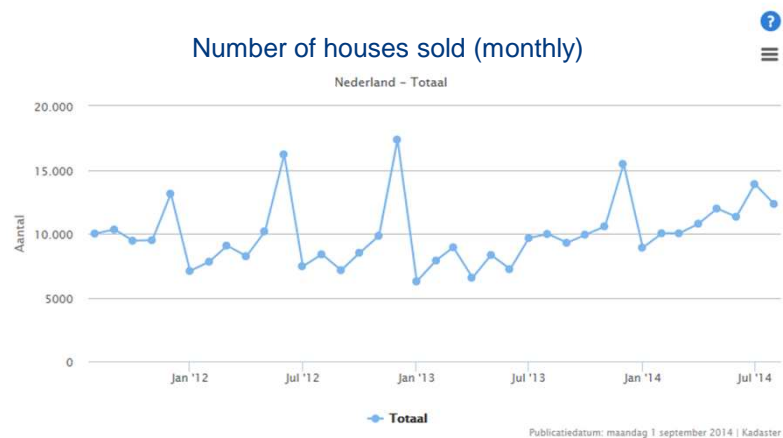
Integration of worlds



- Statistics
- Mapping
- Remote Sensing
- *Land Administration*



Dynamic society



Information trends

■ Technology push

- Mobile, location based
- 3D, 4D, 5D
- Lots of (integrated) data
- New sensors / Remote Sensing applications
-



■ Society pull

- Next generations (privacy, high tech, social media)
- New role for authorities and governments
- Other users of our services (justice, agriculture, climate change, planning, ...)
-

Land administration





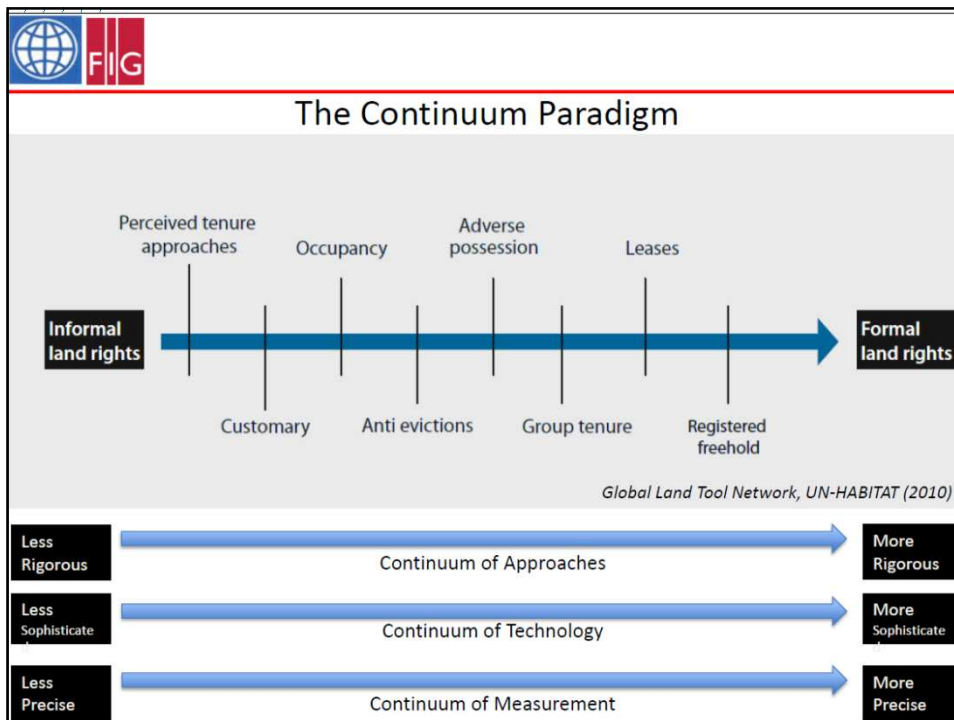
What's the problem?

- 70% unregistered people – land relations
- Land Administration needed for sustainable development
- Corruption

- Getting Fit for Purpose
- 600 – 1200 years of work?
- 10 – 2000 US\$ per parcel?
- > 100 Billion US\$?

- **New thinking needed**
- **FIG plays an important role**

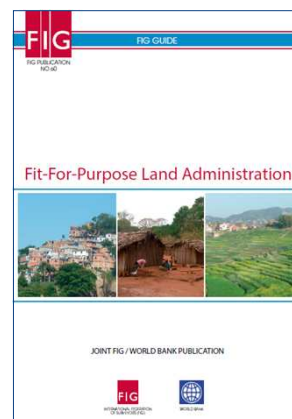




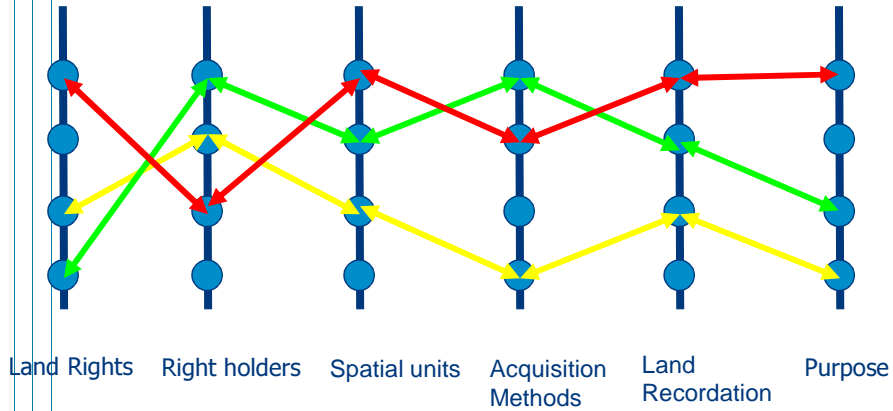
Fit for Purpose

Key principles:

- Visible boundaries rather than fixed boundaries
- Satellite images/orthophotos rather than field surveys
- Accuracy relates the purpose rather than technical standards
- Opportunities for updating, upgrading and improvement

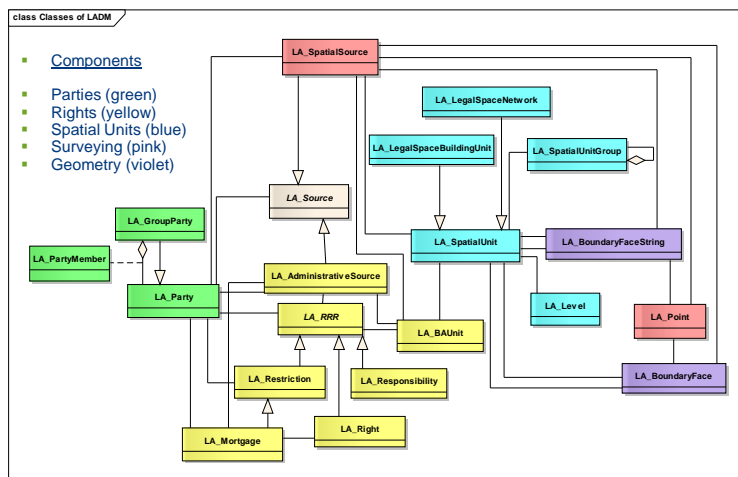


Fit for Purpose 'Equalizer'



- Requirements: Standards (LADM), Software, Capacity
- Criteria: Quality, cost, time

Land Administration Domain Model (UML) ISO standard 19152 (LADM / STDM)

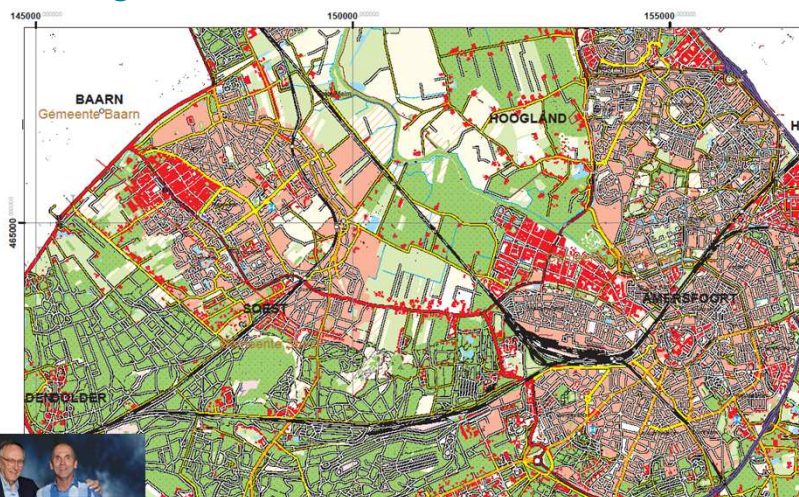




Collect



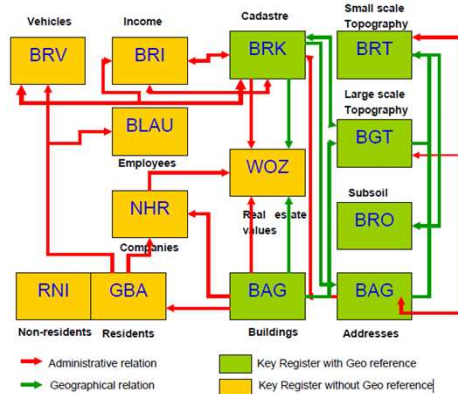
Manage



Distribute



Authentic Registers



Trends of tomorrow?

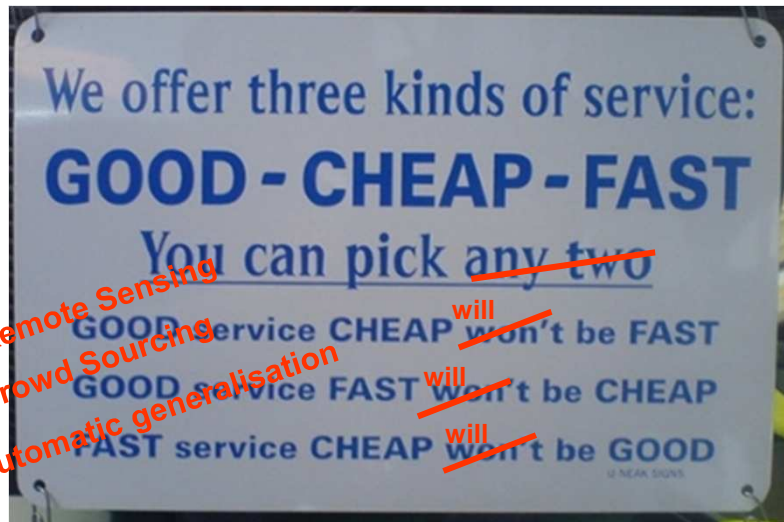
- User-centered
Works *with* users instead of for users
- Network-oriented
Partner in the information network of iSociety
- Cope with formal and informal data
- Fit for purpose



***NMA's give
access to trust***

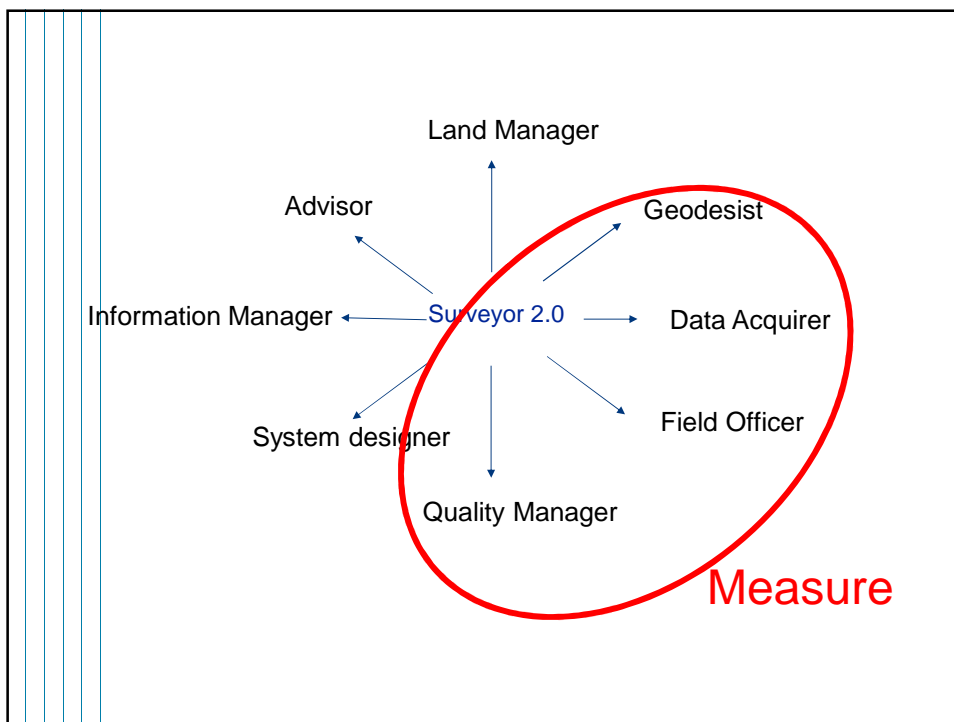
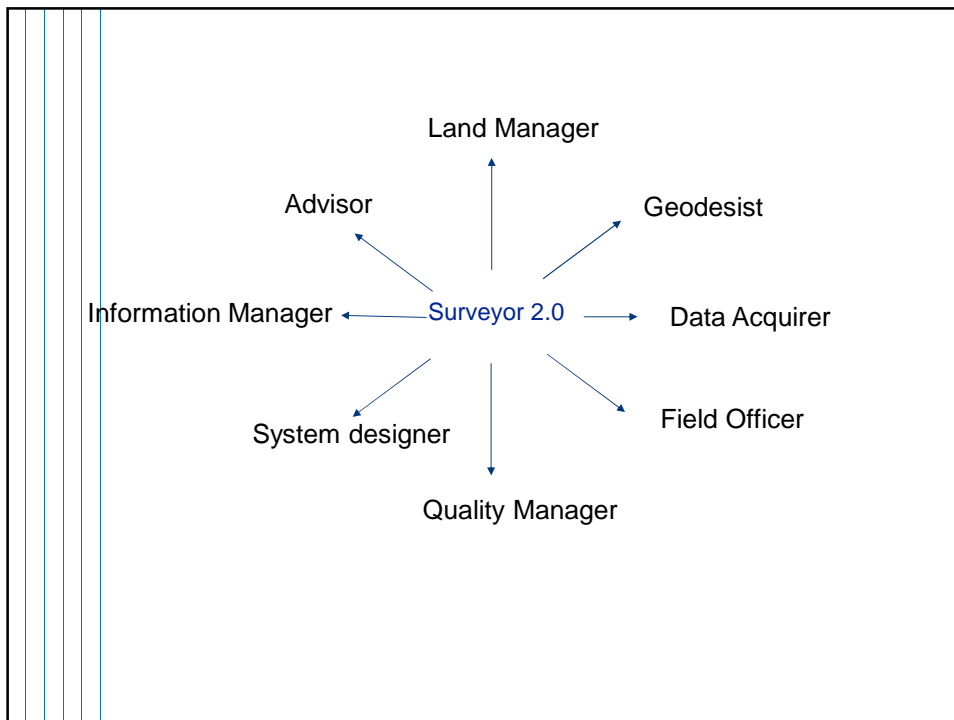


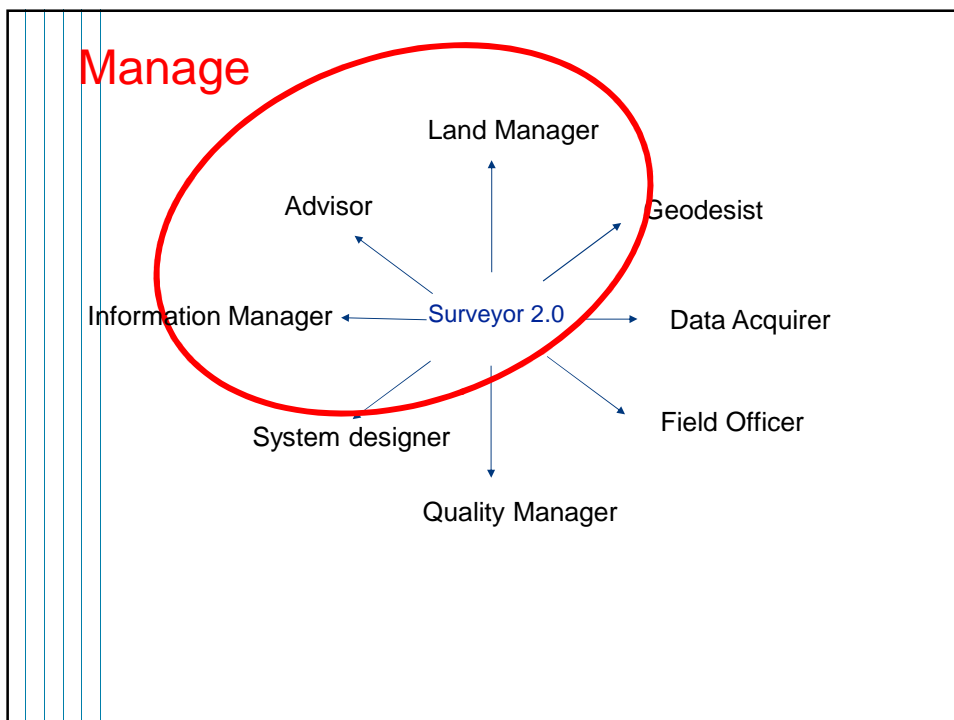
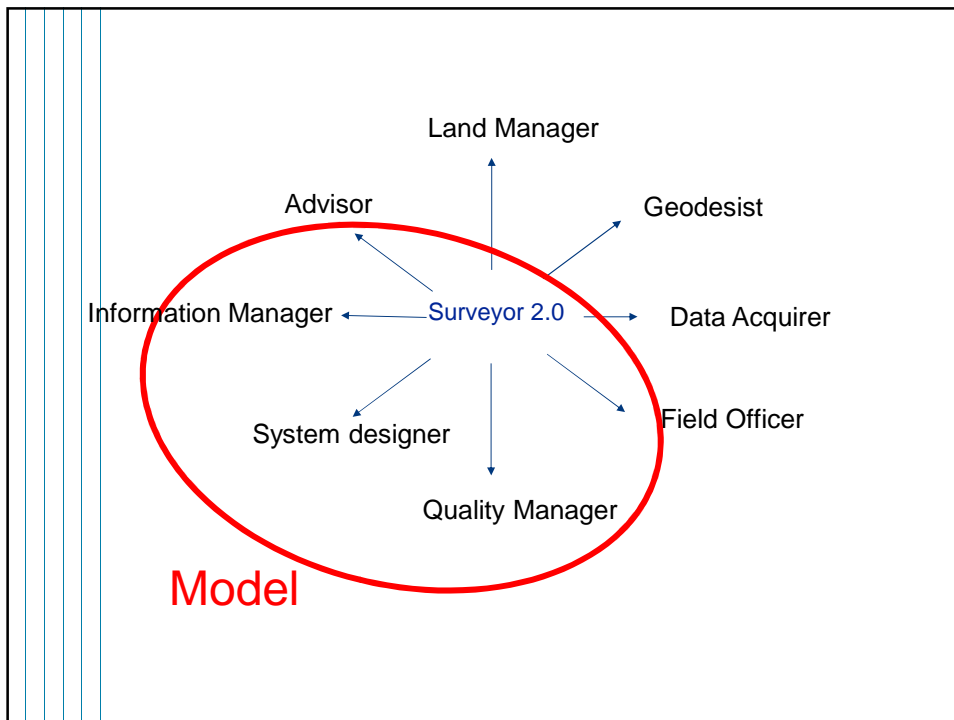
New paradigms?



New thinking





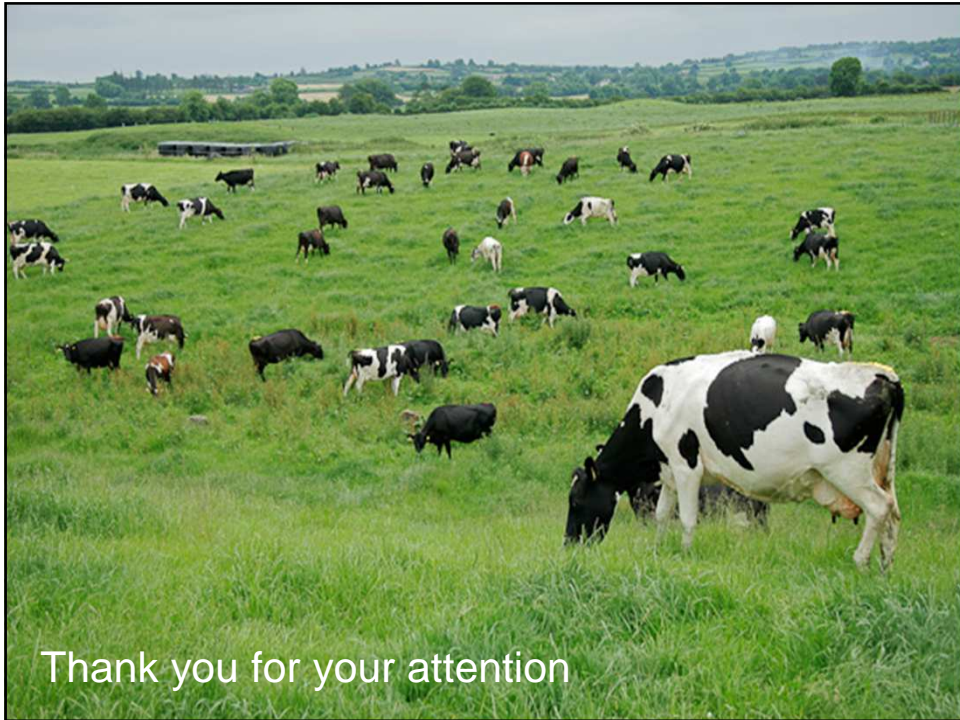


Conclusion

The workplan FIG 2015 – 2018 should:

- Integrate with Remote Sensing and Statistics world
- Work on fast – cheap – good paradigms
- Be for 70% + 30% = 100% of the world
- Address the evolving role of the surveyor in getting/becoming/staying Fit for Purpose
- Account for dynamic information management





Thank you for your attention

Overview

OVERVIEW

- NMA's, Cadastres, LR (6 vakjes)
 - NMA's and FIG
 - Multi-purpose organisations
 - Our network + Eulis
- Dynamic information management (dashboard)
 - Inwinning (juridisch/spatial)
 - Management (maintanance/bijhouding)
 - Distribution/divulgation
- SDI's / key registers
- Statistics, Geo-information, Remote Sensing, Land Administration (UN GGIM)
- Role of the profession
 - New thinking / global agenda
 - Continuum of continuums
 - Surveyor 2.0 (FIG)
- 70%: nothing / 30% iets
 - Staying fit for purpose
 - Approaches (FFP)
- Standards (LADM/STDM)
- Innovations (mapping and administration)
 - Services
 - Products
 - Processes
- The role of FIG/workplan
- Teo/Dorine