



XXVI FIG CONGRESS

6-11 May 2018, İstanbul



EMBRACING OUR SMART WORLD WHERE THE CONTINENTS CONNECT:
ENHANCING THE GEOSPATIAL MATURITY OF SOCIETIES

Organized by



Main Supporters



Platinum Sponsors





EMBRACING OUR SMART WORLD WHERE THE CONTINENTS CONNECT:
ENHANCING THE GEOSPATIAL MATURITY OF SOCIETIES
6-11 May 2018, İstanbul



BIM AND GIS INTEROPERABILITY



EDGAR BARREIRA | INÊS VILAS BOAS
YOUNG SURVEYORS PORTUGAL

Organized by



Main Supporters

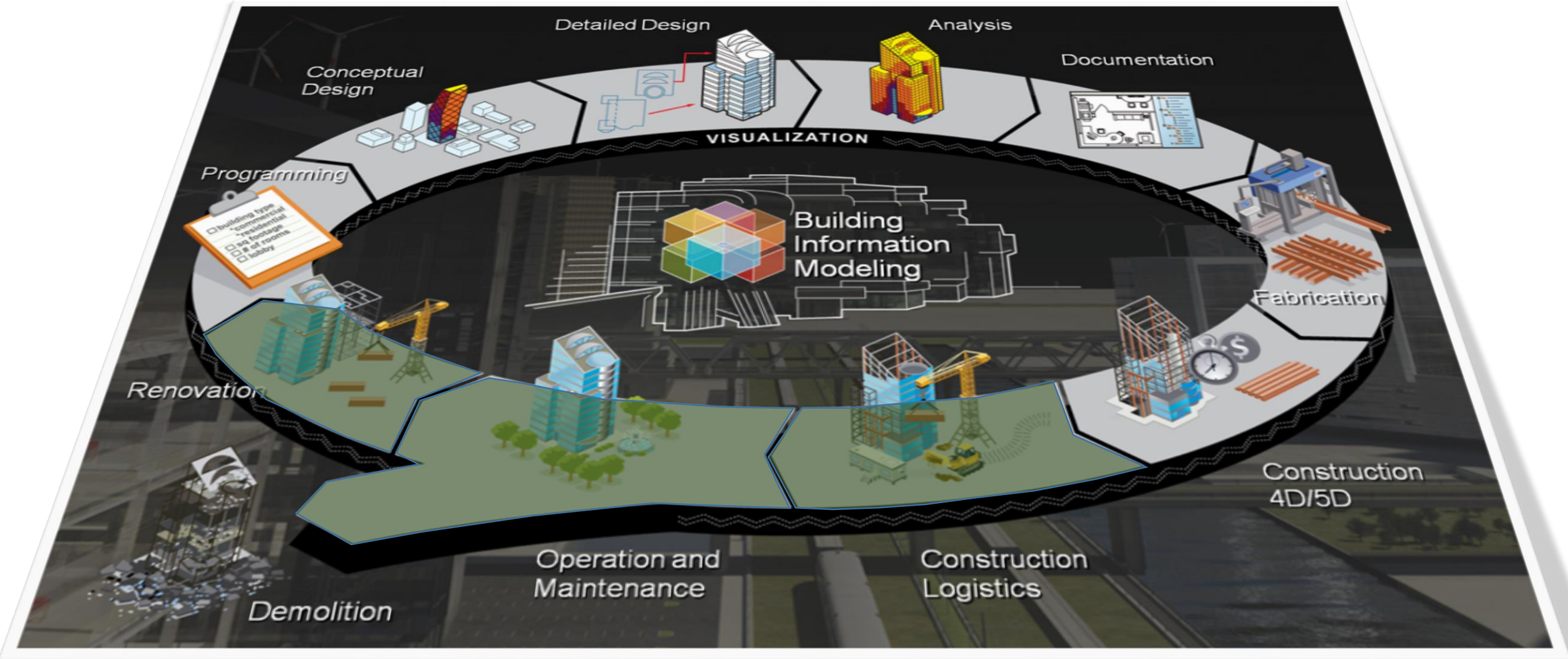


Platinum Sponsors



BIM for Surveyors Workshop

WHAT IS BIM?



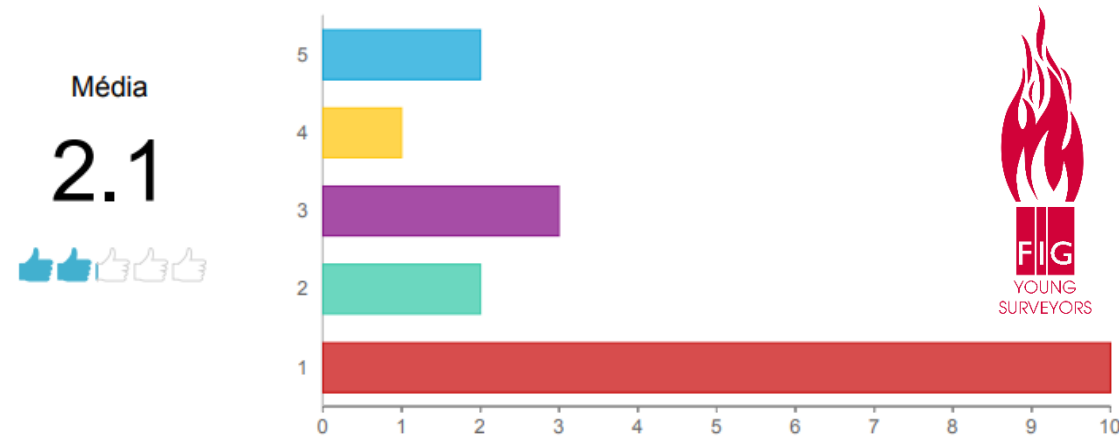


EMBRACING OUR SMART WORLD WHERE THE CONTINENTS CONNECT:
ENHANCING THE GEOSPATIAL MATURITY OF SOCIETIES
6-11 May 2018, Istanbul

WHAT IS BIM?

How Young Surveyors looked for this one year ago (YSEM17 - Helsinki)?

How do you rank your BIM knowledge



Organized by



Main Supporters



Platinum Sponsors

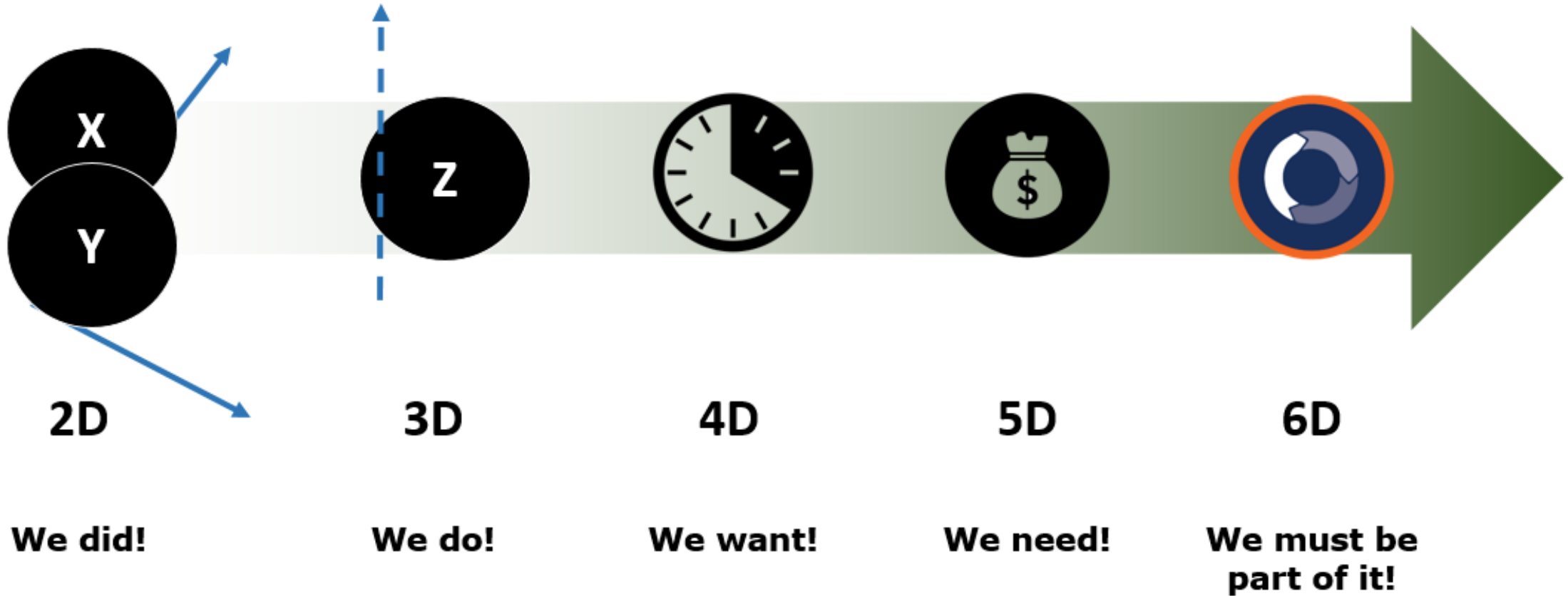


BIM for Surveyors Workshop



WHAT IS BIM?

An incremental plus equation...



Organized by



Main Supporters



Platinum Sponsors



BIM for Surveyors Workshop



WHY GET BIM FOR US?

Take a look for the Vision and Opportunities

- ❖ Move from Analogue into Digital
 - ❖ Move from Drawings/PDFs into Data
 - ❖ Enabled Data-Driven Decision-Making
 - ❖ Information Management in embedded
 - ❖ Reduce wastage in construction
 - ❖ Make efficiencies in operation / maintenance
- ✓ Surveyors made this long time ago! We are so good for this!
 - ✓ GIS is within our skills. Let's to it!
 - ✓ You just need to be a better Data Scientist, but using what you know about geography!
 - ✓ It's not a Surveyor problem. But Surveyor knows the importance of integration!
 - ✓ Our tradition is to be budget-keepers. Go with the flow!
 - ✓ Geography is absolutely part of the response. And Geography is our realm, right !?

Organized by



Main Supporters



Platinum Sponsors



BIM for Surveyors Workshop



EMBRACING OUR SMART WORLD WHERE THE CONTINENTS CONNECT:
ENHANCING THE GEOSPATIAL MATURITY OF SOCIETIES
6-11 May 2018, Istanbul

WHY BIM-GIS INTEGRATION?

Real or 3D GIS models?



Organized by



Main Supporters



Platinum Sponsors



BIM for Surveyors Workshop

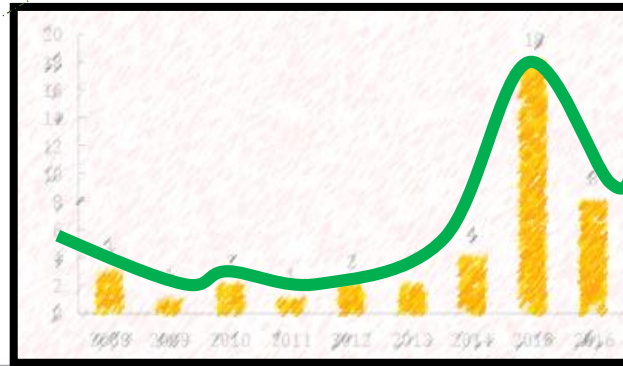


WHY BIM-GIS INTEGRATION?

Check the major differences on software to manage BIM

- ❖ File based
- ❖ File based exchange
- ❖ Inferior data exchange between COTS products
- ❖ Small number of users

- ✓ Server based w/ relational databases
- ✓ File and webservice for Exchange
- ✓ Full integration between COTS and OS products
- ✓ Large number of users



Evolution of the scientific articles about BIM-GIS in last years

Organized by



Main Supporters



Platinum Sponsors



BIM for Surveyors Workshop



HOW TO ADD VALUE WITH BIM-GIS INTEGRATION?

To Plan, To Design, To Build

- Site Selection/Location planning
- Site circulation/parking/vehicle routing
- Visualization
 - Building Skins
 - Textures
- ViewShed analysis
- Drainage analysis
- Erosion control analysis
- Height analysis
- Airspace encroachments
- Shadow analysis (solar potential)
- Security/Evacuation planning
- Temporal Analysis
 - Historical
 - Existing
 - Future
- Economic Analysis
- Demographics
- Soil Conditions
- Transportation
- Emergency Management/Security
- Total Cost of Ownership/Lifecycle Analysis

Organized by



Main Supporters



Platinum Sponsors



BIM for Surveyors Workshop



EMBRACING OUR SMART WORLD WHERE THE CONTINENTS CONNECT:
ENHANCING THE GEOSPATIAL MATURITY OF SOCIETIES
6-11 May 2018, Istanbul

HOW TO ADD VALUE WITH BIM-GIS INTEGRATION?

Use GIS as a Live layer of an operation

- GIS-based Facilities management (maintain 3-D models)
- Network routing/analysis
- Asset management
- Public Safety (Security, Fire Protection...)
- Way-Finding (Routing)
- Interior Space analyses (Areas, Elevation, Volumes)
- Energy Management (sensors)

Organized by



Main Supporters



Platinum Sponsors



BIM for Surveyors Workshop



EMBRACING OUR SMART WORLD WHERE THE CONTINENTS CONNECT:
ENHANCING THE GEOSPATIAL MATURITY OF SOCIETIES
6-11 May 2018, İstanbul

HOW TO ADD VALUE WITH BIM-GIS INTEGRATION?

Analyse BIM as a typical GIS layer

- Existing As-built architectural/structural models
- Existing As-built networks
- Security planning
- Evacuation routing

Organized by



Main Supporters



Platinum Sponsors

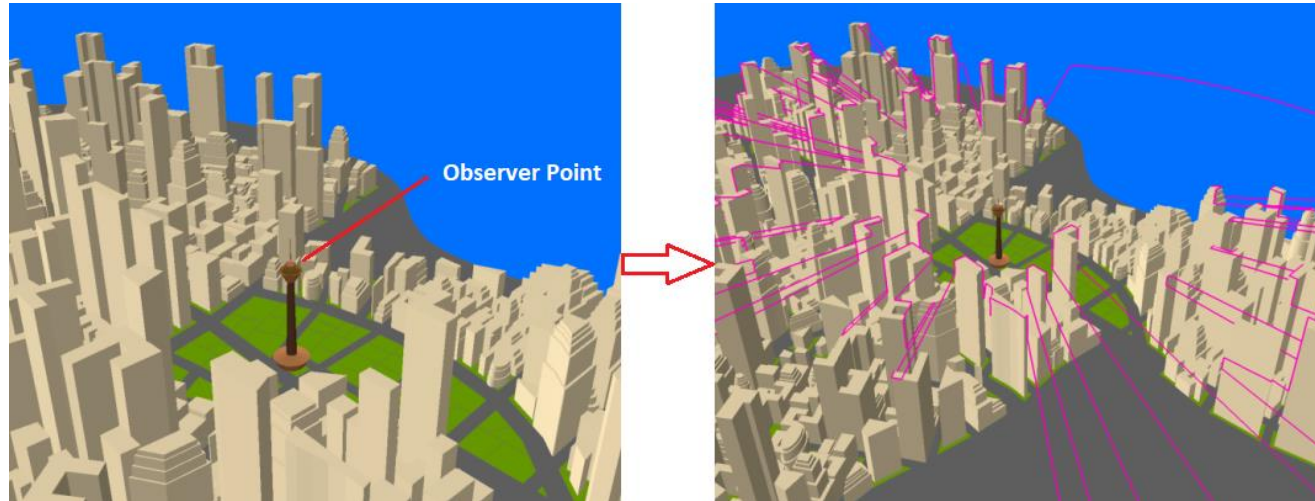


BIM for Surveyors Workshop



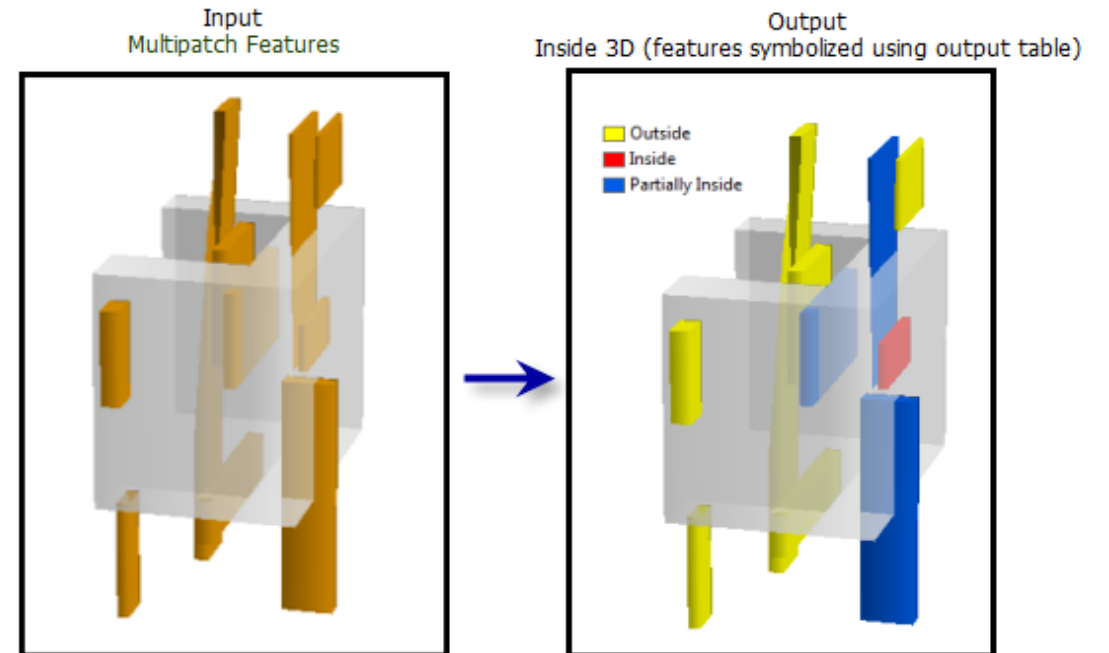
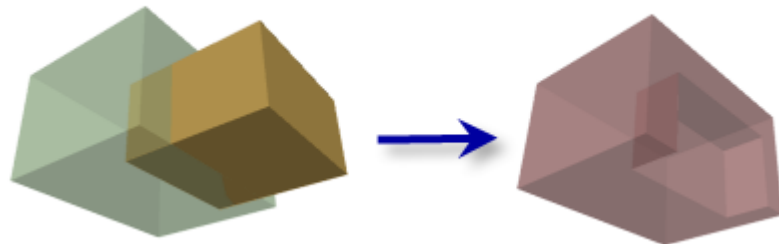
HOW TO ADD VALUE WITH BIM-GIS INTEGRATION?

Analyse BIM as a typical GIS layer (examples)



Input
Multipatch Features

Output
Difference 3D



Organized by



Main Supporters



Platinum Sponsors

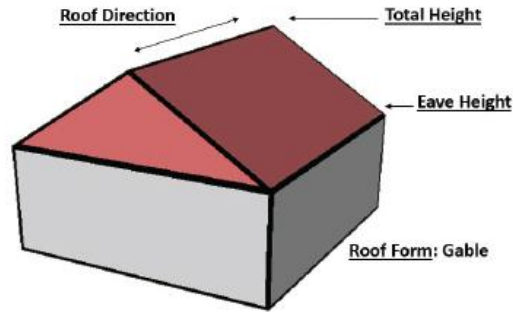


BIM for Surveyors Workshop

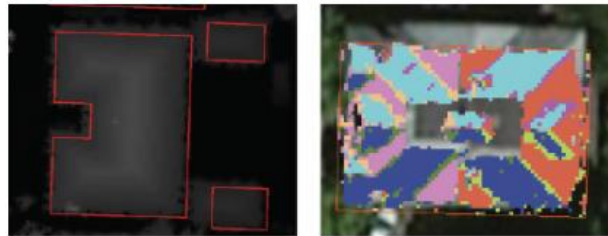
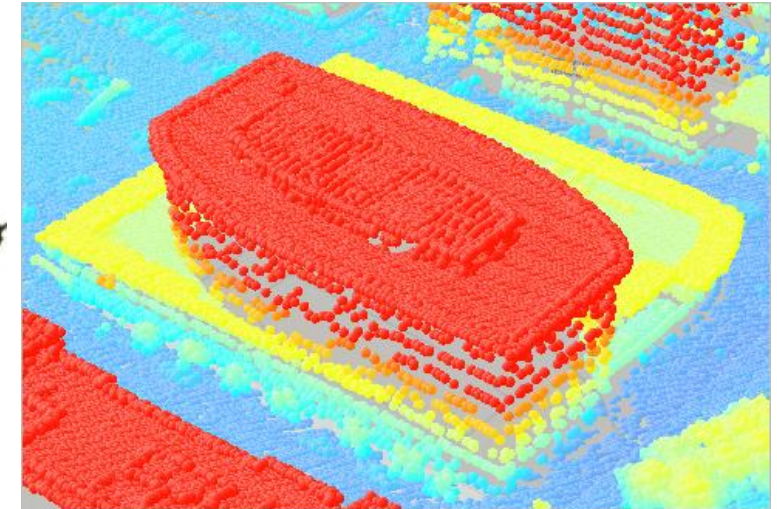


HOW TO ADD VALUE WITH BIM-GIS INTEGRATION?

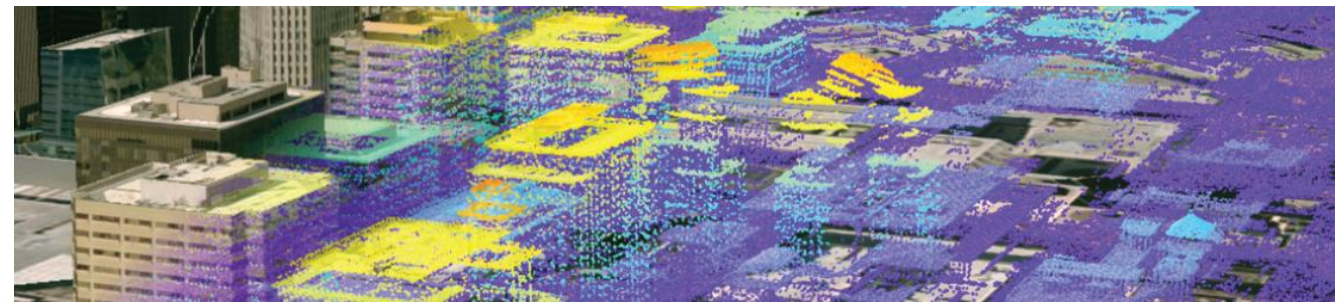
Integrate point clouds with BIM models as a plus (examples)



The basic attributes for procedurally creating a 3D building.



Building footprint polygons on a digital surface model raster (left) and a rooftop classified by slope and aspect.



All the images from The ArcGIS Imagery Book

Organized by



Main Supporters



Platinum Sponsors



BIM for Surveyors Workshop



esri

THE
SCIENCE
OF
WHERE



HOW TO ADD VALUE WITH BIM-GIS INTEGRATION?

Some of the most popular 3D data formats

- **3DS**
- ACAD
- ADAC
- AIS
- AIXM
- AIXM5
- ARCGEN
- ARCGISMAP
- ARCGIS_LAYER
- ARCINFO
- ARCPADAXF
- BMP
- CAT
- CDED
- CGDEF
- **CITYGML**
- **COLLADA**
- CSV
- DATAFILE
- DB2
- DB2SPATIAL
- DBF
- DGNV8
- DLG
- DMDF
- DNF
- DSFL
- DTED
- DWF
- E00
- EPA_GDXML
- EPS
- ESF
- ESRIMSD
- FACET
- FFS
- FILECOPY
- FILEGDB
- FM0
- FM0_SQL
- GDMS
- GENAMAP
- GENERIC
- GEODATABASE_FILE
- GEODATABASE_MDB
- GEODATABASE_SDE
- GEODATABASE_XML
- GEOHASH
- GEOJSON
- GEONET
- GEORSS
- GEOTIFF
- GG
- GIF
- GML
- GML212
- GMLSF
- GOOGLE_SPREADSHEET
- T
- GOOGLEFUSIONTABLE
- S
- GOOGLEFUSIONTABLE
- S_DB
- GPX
- GRD
- IDRISI
- IEPS
- **IFC**
- IFF
- IGDS
- INFX
- INFXSPATIAL
- ISO8211
- IUF
- JOBXML
- JSON
- KF85
- LANDONLINE
- LANDXML
- **LAS**
- MASIK
- MCF
- MDB_ADO
- MGE
- MIF
- MITAB
- MOEP
- MSSQL_ADO
- MSSQL_SPATIAL
- NEN3610
- NTF
- NULL
- OBJ
- ODBC2
- OGCKML
- OGEOSMS
- ORACLE
- ORACLE8I
- ORACLE8I_DB
- **ORACLEPOINTCLOUD**
- OSM
- OSVECTORMAPDISTR
- ICT
- OSVECTORMAPLOCAL
- PCARCINFO
- PDF
- PDF2D
- PHOCUS
- **POINTCLOUDXYZ**
- POSTGIS
- POSTGRES
- QLF
- RDB
- RDB_PROJECT
- REGIS
- S57
- SAIF
- SALESFORCE
- SCHEMA
- SCHEMA_FROM_TABLE
- LE
- SDE30
- SDL
- SDTS
- SEG-P1
- SHAPE
- **SKETCHUP**
- SLF
- SPATIALITE
- SQLITE3
- SQLLDR
- STRUMAP
- SVG
- TEXTLINE
- TIGER
- TIGERGML
- TOP10
- TOP50NL
- UFO
- VML
- VPF_DB
- VRML
- VRT
- WFS
- WHITESTAR
- WKB
- WKT
- X3D
- X3D_VRML
- XDK
- XLS_ADO
- XML
- **XYZ**
- Z-
- MAP_ASCII
- ZFS
- ZGF
- ZMAP

Organized by



Main Supporters



Platinum Sponsors





EMBRACING OUR SMART WORLD WHERE THE CONTINENTS CONNECT:
ENHANCING THE GEOSPATIAL MATURITY OF SOCIETIES
6-11 May 2018, İstanbul

CASE STUDY

Hospital Divino Espírito Santo (Azores – Portugal)



esri Portugal
THE SCIENCE OF WHERE™



Organized by



Main Supporters



Platinum Sponsors



BIM for Surveyors Workshop



EMBRACING OUR SMART WORLD WHERE THE CONTINENTS CONNECT:
ENHANCING THE GEOSPATIAL MATURITY OF SOCIETIES
6-11 May 2018, Istanbul

CASE STUDY

Workflow

Both parties developed this case study in different phases to get solid outputs for each workflow step.



Sharing Knowledge



Interoperability Tests



**IFC/REVIT
Interoperability**



**Geo-Services and
Virtual Reality**

Organized by



Main Supporters



Platinum Sponsors



BIM for Surveyors Workshop



EMBRACING OUR SMART WORLD WHERE THE CONTINENTS CONNECT:
ENHANCING THE GEOSPATIAL MATURITY OF SOCIETIES
6-11 May 2018, İstanbul

CASE STUDY

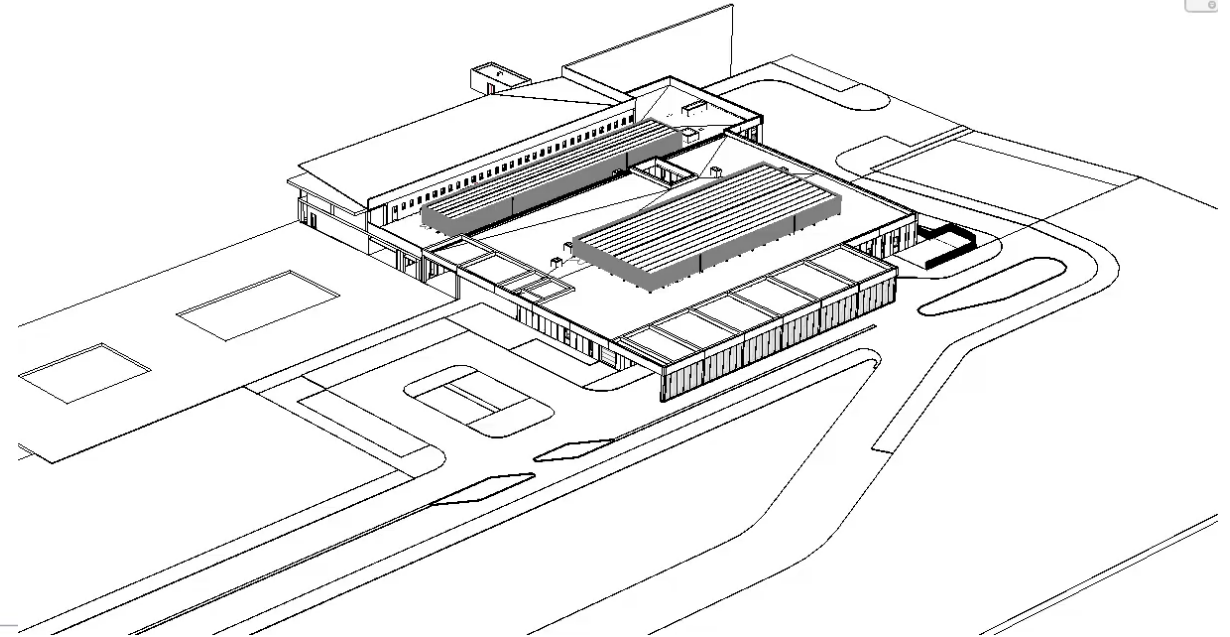
Workflow | Step 1

Step 1

Sharing Knowledge

Both parties shared BIM technical knowledge and how to leverage BIM through interoperability. This phase was useful to understand the requirements and the priorities to integrate a REVIT project into GIS. The parties identified:

- Contents and good practices to manage the information
- Requirements to transfer graphic components and the best practice to manage the collaboration
- Market strategy



Organized by



Main Supporters



Platinum Sponsors



BIM for Surveyors Workshop



EMBRACING OUR SMART WORLD WHERE THE CONTINENTS CONNECT:
ENHANCING THE GEOSPATIAL MATURITY OF SOCIETIES
6-11 May 2018, Istanbul

CASE STUDY

Workflow | Step 2

Step 2 Interoperability Tests

The teams started to research and test different interoperability formats. After these tests both parties listed **advantages and disadvantages**. Interoperability is regularly on the mindset of GIS professionals and the sequence of procedures were:

- The architecture model was modeled and managed in **Autodesk Revit** format (**RVT**)
- The model was exported to an interoperable format: **IFC** by building SMART Data model
- The model was imported for the **ArcGIS** ecosystem

Organized by



Main Supporters



Platinum Sponsors



BIM for Surveyors Workshop



CASE STUDY

Workflow | Step 3 | IFC / REVIT Interoperability

The screenshot displays the CityEngine Advanced 2016.1 interface. On the left, the 'Properties | RVT Links' panel shows a linked Revit model 'ARIPA_AQ_FE_Servico Urgencias_Envoltorio 3D.rvt'. The main viewport shows a 3D architectural model of a building. The 'Contents' panel on the left lists various elements like 'ÁreaEnvoltorio', 'IfcWallStandardCase_surf', 'IfcSlab_surface', etc. The 'Drawing Order' panel is also visible. The central workflow diagram is a key feature, showing a process where multiple IFC elements are processed by an 'IFCPropertySetDefinitionCreator' to generate an 'Output' that is then used to create individual IFC elements for each building component.

Organized by



Main Supporters



Platinum Sponsors



BIM for Surveyors Workshop



EMBRACING OUR SMART WORLD WHERE THE CONTINENTS CONNECT:
ENHANCING THE GEOSPATIAL MATURITY OF SOCIETIES
6-11 May 2018, Istanbul

CASE STUDY

Workflow | Step 4

Step 4

Geo-Services and Virtual Reality

IFC turns into a fundamental interoperable format for BIM, improving the interaction between different software (CAD-GIS or GIS-GIS). In this case the end platform was ArcGIS Online, as the reference technology platform to allow as-a-Service BIM platform. This platform allows:

- Access for all kind of professionals, with different levels of permissions
- Reduce project errors and an easy way to show the project for the infrastructure owners
- Keep the copyright of the project and its object classes and families

Organized by



Main Supporters



Platinum Sponsors



BIM for Surveyors Workshop



EMBRACING OUR SMART WORLD WHERE THE CONTINENTS CONNECT:
ENHANCING THE GEOSPATIAL MATURITY OF SOCIETIES
6-11 May 2018, Istanbul

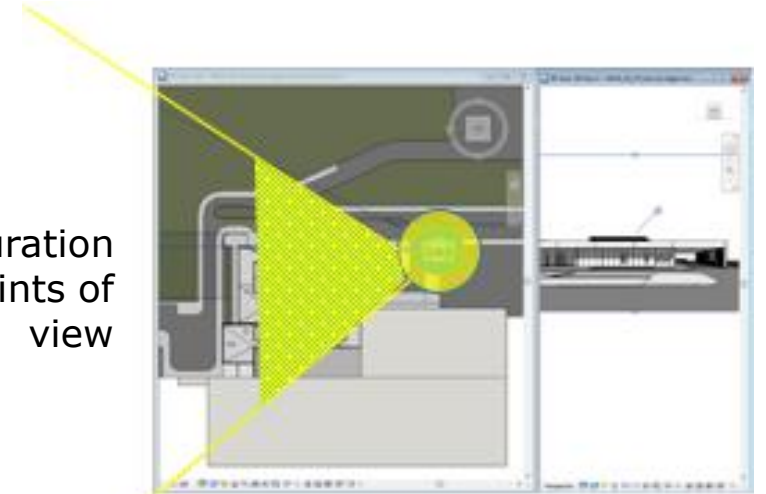
CASE STUDY

Applications | Virtual Reality



SAMSUNG Gear VR
Powered by **oculus**

Configuration of points of view



Virtual Reality as trigger to improve the project meetings between Architects and the owners

Organized by



Main Supporters



Platinum Sponsors



BIM for Surveyors Workshop



EMBRACING OUR SMART WORLD WHERE THE CONTINENTS CONNECT:
ENHANCING THE GEOSPATIAL MATURITY OF SOCIETIES
6-11 May 2018, İstanbul

CASE STUDY

Applications | Site Viewer

Georeference is important to use in the site of the works (for the owner or another companies)

This solution must be improved in the next interactions, to adapt and add more tools for each *persona* and business



Organized by



Main Supporters



Platinum Sponsors

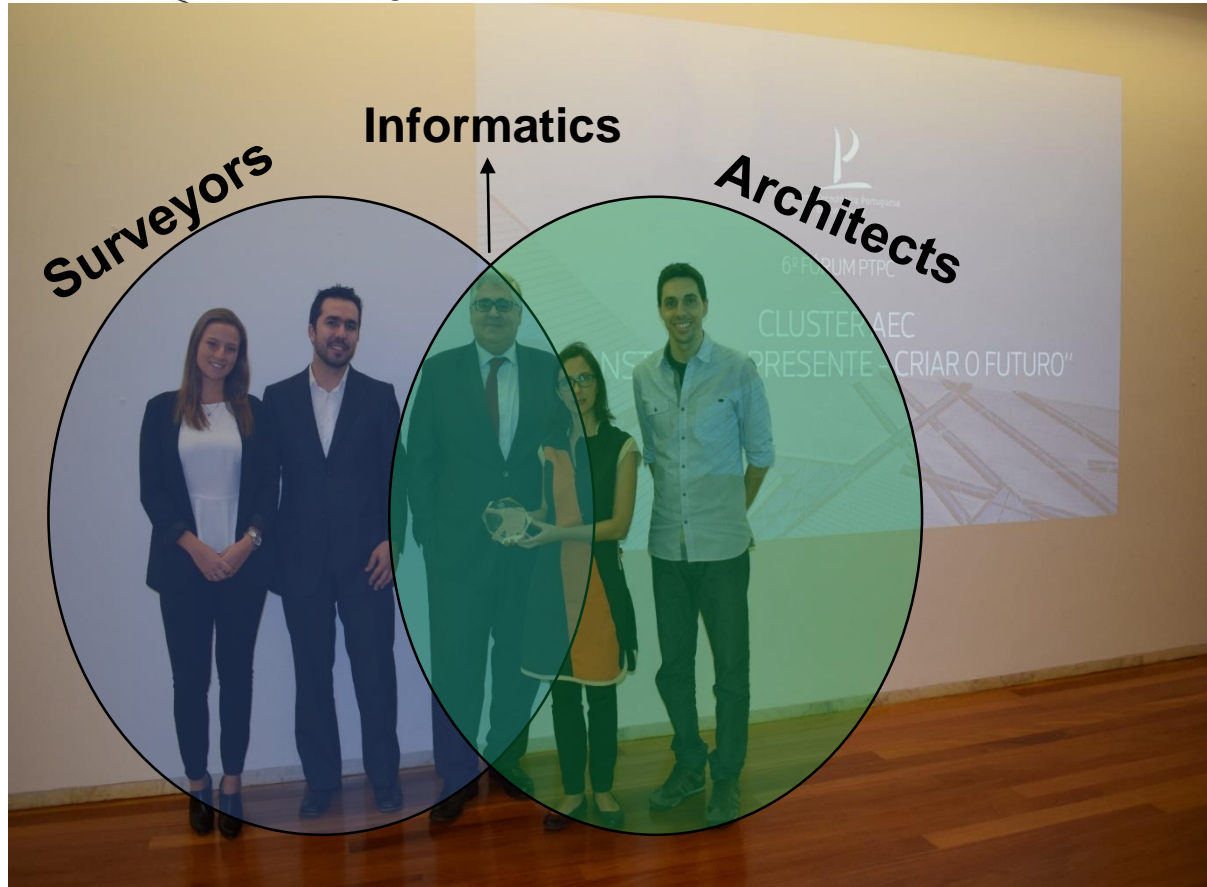


BIM for Surveyors Workshop



EMBRACING OUR SMART WORLD WHERE THE CONTINENTS CONNECT:
ENHANCING THE GEOSPATIAL MATURITY OF SOCIETIES
6-11 May 2018, Istanbul

CT197 NATIONAL BIM AWARD 2017



Team:

- Sara Pelicano (Administrator at ARIPA)
- Nuno Pinto (BIM Manager at ARIPA)
- Rui Sabino (CEO at Esri Portugal)
- Edgar Barreira (Consultant at Esri Portugal)
- Inês Vilas Boas (GIS Consultant at Esri Portugal)

Organized by



Main Supporters



Platinum Sponsors



BIM for Surveyors Workshop

WHEN THE TECH LEADERS JOIN EFFORTS...

GIS



esri

+



AUTODESK®

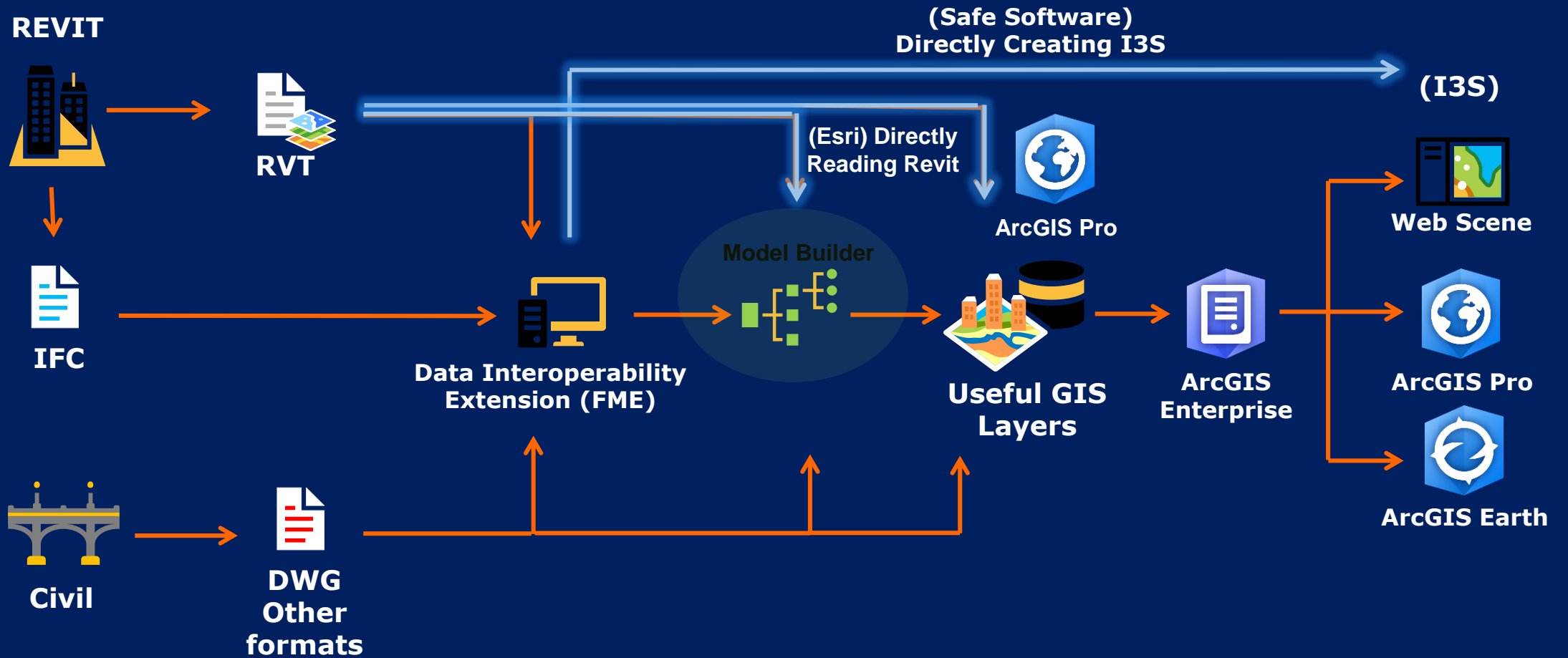
BIM



esri

THE
SCIENCE
OF
WHERE

TOP BIM-GIS INTEGRATION



Modify | Roofs

Select Materials Settings Additional Settings Project Location Design Options Main Model Manage Links Phases Selection Inquiry Macros Visual Programming

Modify | Roofs

- Project Browser - c_rvt8_Townhouse.rvt
- Families
 - Annotation Symbols
 - Cable Trays
 - Casework
 - Ceilings
 - Conduits
 - Curtain Panels
 - Curtain Systems
 - Curtain Wall Mullions
 - Detail Items
 - Doors
 - Duct Systems
 - Ducts
 - Flex Ducts
 - Flex Pipes
 - Floors
 - Furniture
 - Generic Models
 - Pattern
 - Pipes
 - Piping Systems
 - Planting
 - Plumbing Fixtures
 - Profiles



Properties

Basic Roof
Generic - 12"

Roofs (1) Edit Type

Slope	
Thickness	1' 0"
Volume	1626.43 CF
Area	1626.81 SF

Identity Data

Image	
Comments	
Mark	
DonText	My Value

Phasing

Phase Created	New Construction
Phase Demolis...	None

[Properties help](#) Apply



EMBRACING OUR SMART WORLD WHERE THE CONTINENTS CONNECT:
ENHANCING THE GEOSPATIAL MATURITY OF SOCIETIES
6-11 May 2018, İstanbul

NEW TRENDS

GIS into Unreal Engine



Organized by



Main Supporters



Platinum Sponsors





NEW TRENDS

GIS from simple mobile apps - SPIKE

Surveyors must keep updated the technical approaches to be part of the evolutions, not the breaks for the innovation.

SKIPE is not a tool for Surveyors, if Surveyors don't consider it as a tool for the another ones to update its own projects...In this case, with a perfect integration with GIS, Surveyors will work in collaboration with another ones and be leaders in a process (not followers – followers ensure Surveyors must be Leaders!



Organized by



Main Supporters



Platinum Sponsors



BIM for Surveyors Workshop



EMBRACING OUR SMART WORLD WHERE THE CONTINENTS CONNECT:
ENHANCING THE GEOSPATIAL MATURITY OF SOCIETIES
 6-11 May 2018, Istanbul

ABOUT REVENUE...

Statistics about the size Market of BIM



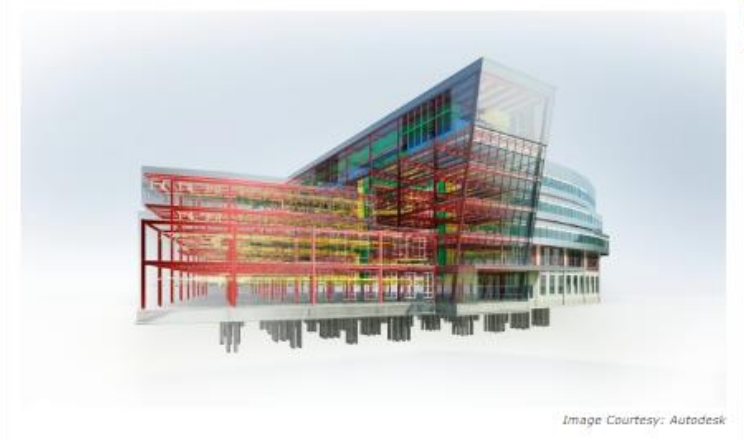
GIS & Maps Earth Observation GNSS & Positioning LIDAR Location Tech UAVs BIM & Mod

Home > News > Global BIM Market share & size to grow US \$10.36 billion by...

Global BIM Market share & size to grow US \$10.36 billion by 2022

By News Desk - April 16, 2018

SHARE



Geospatial World Media (2018)

WORLD BUILDING INFORMATION MODELING (BIM) MARKET

Opportunities and Forecasts, 2015-2022

World Building Information Modeling (BIM) market, is expected to reach **\$11.7 billion** by 2022.

Growing at a **CAGR of 21.62%** during 2016-2022.

World Building Information Modeling (BIM) Market, By Deployment

Cloud based

On-premise

Cloud based would dominate the market throughout 2015 - 2022

The comprehensive view on the % share of deployment segment (2022)

World Building Information Modeling (BIM) Market, By Solution

Software

Services

Software would dominate the market throughout 2015 - 2022

The comprehensive view on the % share of solution segment (2022)

World Building Information Modeling (BIM) Market, By Vertical

Commercial

Residential

Institutional

Industrial

Infrastructure

Commercial would dominate the market throughout 2015 - 2022

The comprehensive view on the % share of vertical segment (2022)

World Building Information Modeling (BIM) Market, By End User

Architect

Contractor

Others

Architect would dominate the market throughout 2015 - 2022

The comprehensive view on the % share of end user segment (2022)

World Building Information Modeling (BIM) Market Top Impacting Factors

Lack of trained professionals

Enhanced productivity through interoperability

High cost of BIM software

Growing construction industry

Government mandates for BIM

Growing concerns about energy efficiency

2015 2022

World Building Information Modeling (BIM) Market, By Geography

North America

Europe

Asia-Pacific

LAMEA

Asia-Pacific would be the highest revenue generating segment by 2022

The comprehensive view on the % share of geography segment (2022)

Allied Market Research (2016)

Organized by



Main Supporters



Platinum Sponsors



CHALLENGES...

What kind of challenges for BIM-GIS and for the Surveyors?

Please! Try don't be this folk!



He is actively trying to destroy the operation but is often trying to hide his deeds by the use of a "nice" social mask.



Try to be one of these ones!

Organized by



Main Supporters



Platinum Sponsors



BIM for Surveyors Workshop



EMBRACING OUR SMART WORLD WHERE THE CONTINENTS CONNECT:
ENHANCING THE GEOSPATIAL MATURITY OF SOCIETIES
6-11 May 2018, İstanbul



BIM AND GIS INTEROPERABILITY



EDGAR BARREIRA | INÊS VILAS BOAS
YOUNG SURVEYORS PORTUGAL



THANK YOU!
YSNPORTUGAL@GMAIL.COM



Organized by



Main Supporters



Platinum Sponsors



BIM for Surveyors Workshop