



GLTN
GLOBAL LAND TOOL NETWORK

SECURING LAND AND PROPERTY RIGHTS FOR ALL

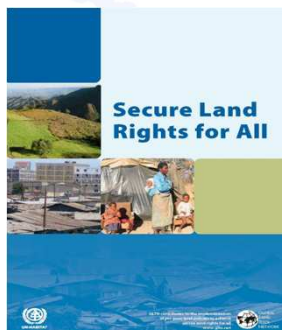
Towards the STDM Version 1.0 Release

2014 FIG Director Generals Forum
20 June 2014, Kuala Lumpur Convention Centre

FACILITATED BY:
UNOHABITAT
FOR A BETTER URBAN FUTURE

THE KEY CHALLENGE

*How to support **various tenure types & systems at scale** to enable land reform and secure land and property rights for all?*

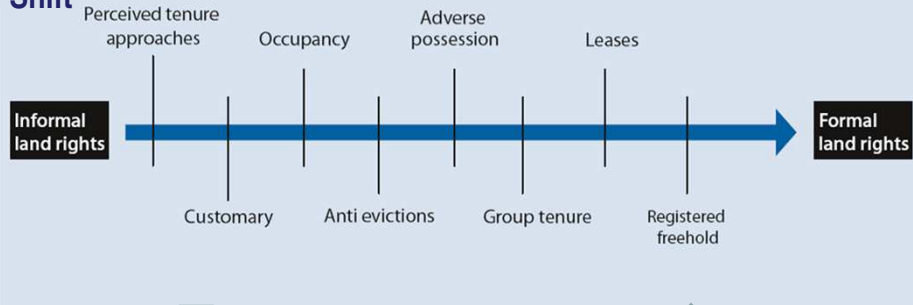


FACILITATED BY:
UNOHABITAT
FOR A BETTER URBAN FUTURE

 **GLTN**
GLOBAL LAND TOOL NETWORK

THE LAND RIGHTS CONTINUUM

Paradigm Shift



WILL
REQUIRE

STDM as one of the tools

TO
SUPPORT

Continuum of recording, technology, accuracy, etc.

FACILITATED BY:
UN HABITAT
FOR A BETTER URBAN FUTURE

GLTN
GLOBAL LAND TOOL NETWORK

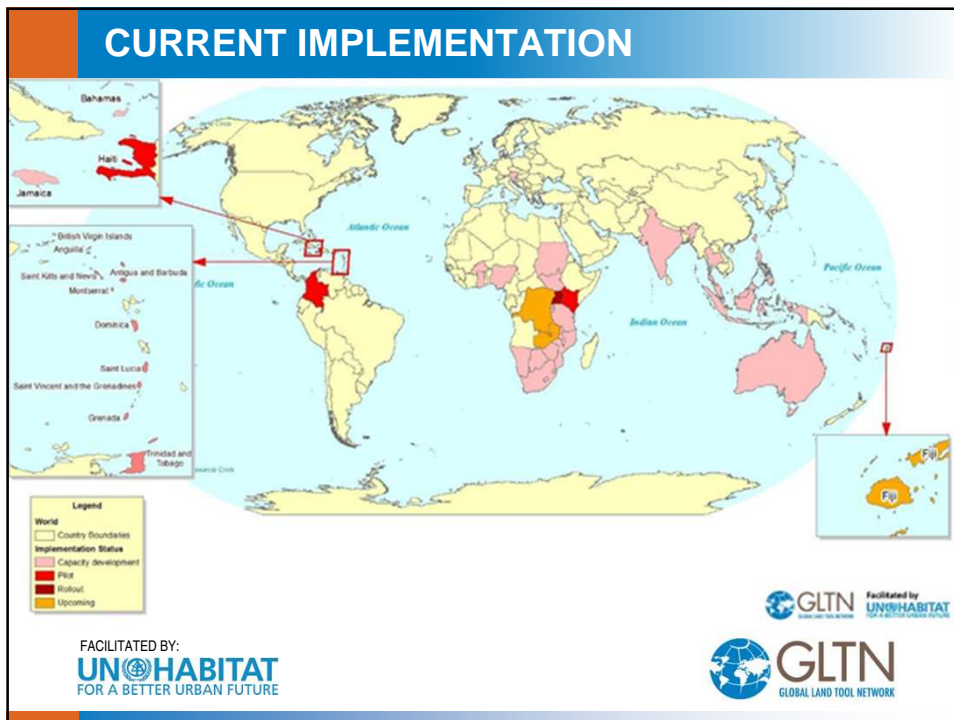
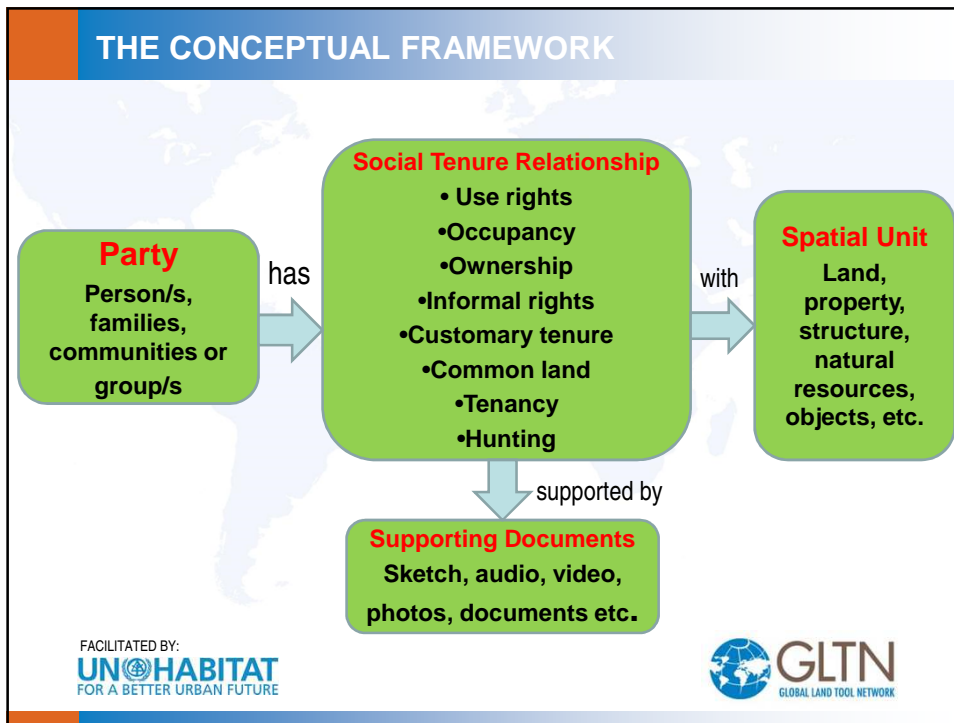
Insanity:

*Doing the same thing over and over again
and expecting different results.*

Albert Einstein

FACILITATED BY:
UN HABITAT
FOR A BETTER URBAN FUTURE

GLTN
GLOBAL LAND TOOL NETWORK



KEY FEATURES

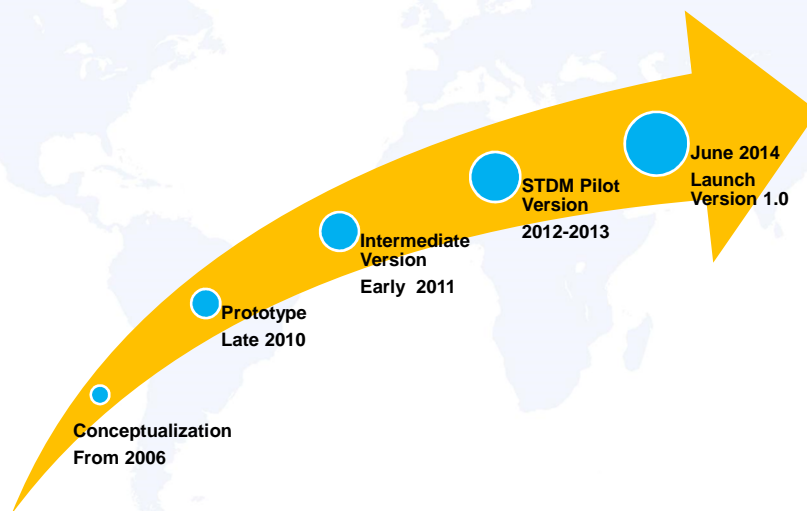
- Supports the continuum approach
- Facilitate the recording of all forms of land rights and claims
- Based on open and free software packages
- Based on global standard (LADM)
- Complements other tools and development interventions
- Easy to use, affordable
- Encourages participation and transparency
- Empowers poor communities and non-technical land stakeholder



FACILITATED BY:
UN HABITAT
FOR A BETTER URBAN FUTURE



STDM DEVELOPMENT TIMELINES



FACILITATED BY:
UN HABITAT
FOR A BETTER URBAN FUTURE



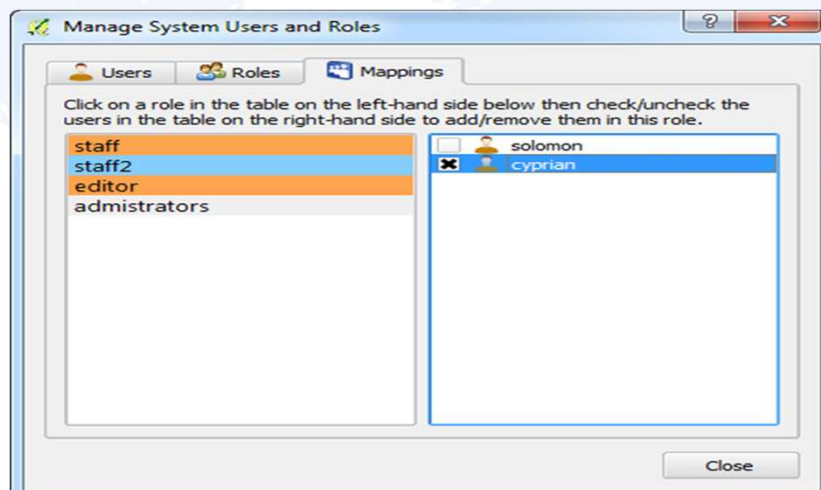
VERSION 1.0 FUNCTIONALITIES

- Users can design or extend existing data management forms
- Create a custom hierarchy of administrative units
- Manage permissions of users to specific modules
- Simple report builder for generating tabular reports
- Design and share custom templates of map-based documents/reports
- Generate map-based documents in batch using default or custom templates
- Import and export wizards that support the both textual and spatial data

FACILITATED BY:
UN HABITAT
FOR A BETTER URBAN FUTURE



VERSION 1.0 – SECURITY FEATURES



FACILITATED BY:
UN HABITAT
FOR A BETTER URBAN FUTURE



VERSION 1.0 – IMPORT/EXPORT

Import to STDM

Assign Columns
Match source and destination table columns.

Source Table:

Occupant Name
 Other Name
 Contact
 Address
 Marital Status
 Education
 Identification

Destination Table:

family_name
 other_names
 contact_telephone
 age
 contact_address
 gender
 id
 identification


< Back Finish Cancel

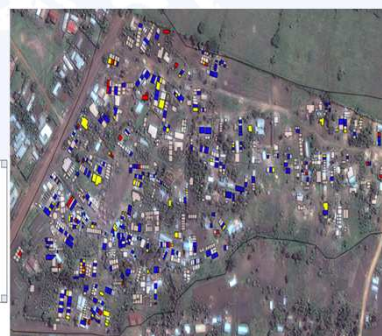
FACILITATED BY:

 FOR A BETTER URBAN FUTURE



VERSION 1.0 – PRODUCE REPORTS

Person Information (By Gender)			
First Name	Last Name	Gender	Photo
Female			
Alice	Adhambho	Female	
Alice	Afieno	Female	
Anne	Rono	Female	
Beatrice	Akinyi	Female	
Beatrice	Adhambho	Female	
Beatrice	Afieno	Female	
Beatrice	Achieng	Female	



FACILITATED BY:

 FOR A BETTER URBAN FUTURE



VERSION 1.0 – DATABASE DESIGN

Wizard
Data Forms customization
Add or Edit Fields/ Columns For Each Module

Tables Table relation and constraint

Table/ Entity

- spatial_unit
- supporting_document
- social_tenure_relationship
- household

Options

Column list

Column label	Description	Data type	Length	Lookup
id	Primary Key	serial		false
family_name	Surname	character varying	25	false
other_names	other given names	character varying	25	false
contact_address	address id	character varying	25	false
identification	identitv	integer		false

Column

Add Edit Del

Lookups tables

- check_type
- check_document_type
- check_social_tenure_t...
- check_gender
- check_forms_of_settle...

Lookups choices

Lookup Values
1 Male
2 Female

Add/Remove Lookup choice

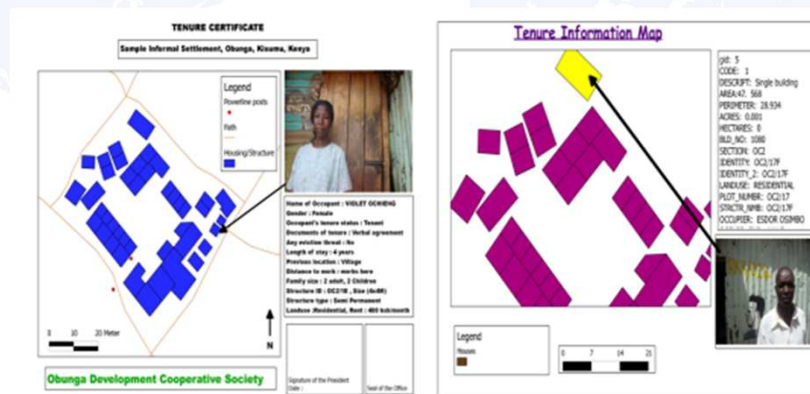
Add Del

< Back Next > Cancel Help

FACILITATED BY:
UN HABITAT
FOR A BETTER URBAN FUTURE



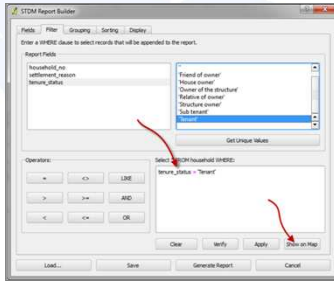
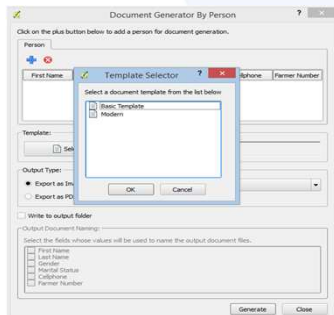
VERSION 1.0 – PRODUCE CERTIFICATES




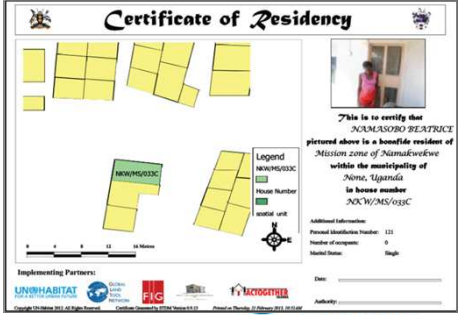
FACILITATED BY:
UN HABITAT
FOR A BETTER URBAN FUTURE



VERSION 1.0 – OTHER REPORTS

Person Information (By Gender)			
First Name	Last Name	Gender	Photo
Female			
Alice	Adhiambo	Female	
Alice	Atieno	Female	
Anne	Rono	Female	
Beatrice	Akiinyi	Female	
Beatrice	Adhiambo	Female	
Beatrice	Atieno	Female	
Beatrice	Achieng	Female	



NEXT STEPS

- Online maintenance and updating of STDM
- Continuous engagement with developers and users
- Implementation in other contexts (e.g. climate change)
- More capacity development initiatives
- Building partnerships (including at country level)
- Documentation and sharing of lessons and experiences



FACILITATED BY:

 FOR A BETTER URBAN FUTURE

 **GLTN**
 GLOBAL LAND TOOL NETWORK

KEY PARTNERS

- FIG
- FIG Foundation / Young Surveyors Network
- University of Twente/ITC
- World Bank
- Kadaster International
- Slum Dwellers International
- Habitat for Humanity International
- Huairou Commission
- IFAD
- Asian Coalition for Housing Rights
- UN-Habitat regional offices
- National and local government units
- Partners at Country Level
- COMMUNITY GROUPS

FACILITATED BY:
UN HABITAT
FOR A BETTER URBAN FUTURE



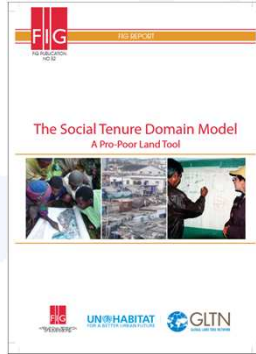
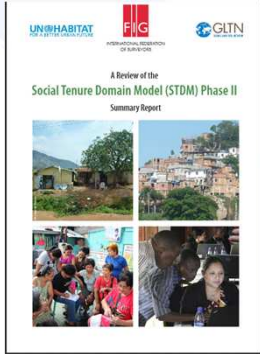
DEVELOPMENT PARTNERS

- 1. Governments of:**
 - Sweden
 - Norway
 - Netherlands
- 2. IFAD**
- 3. Cities Alliance**
- 4. UN-Habitat**
- 5. GLTN Partners**
- 6. Community Groups**

FACILITATED BY:
UN HABITAT
FOR A BETTER URBAN FUTURE



WANT TO KNOW MORE ABOUT STDM ?



FACILITATED BY:
UN-HABITAT
FOR A BETTER URBAN FUTURE

