

Presented at the FIG Working Week 2016,  
May 2-6, 2016 in Christchurch, New Zealand

# Canterbury SDI: lessons learned from post- earthquake recovery

Robert Deakin | Chief Steward – National SDI



## FIG Working Week 2016

CHRISTCHURCH, NEW ZEALAND 2-6 MAY 2016

Recovery

from disaster

Organised by



Platinum Partners



Diamond Partner





# FIG Working Week 2016

CHRISTCHURCH, NEW ZEALAND 2-6 MAY 2016

Recovery

from disaster

## The case for change



Platinum Partners:



Diamond Partner







# 8 SDI focused projects to support recovery

**The 3D Enabled Cities Project** will provide an interactive record of the buildings lost, assist in planning and designing new buildings, and help Cantabrians see what their city will look like in the future.

**Canterbury Maps** is providing a single portal into interactive maps with data on air, water, land, transport, council services, and recreation from across the region.

**GIS Interoperability** will enable agencies to more easily exchange their spatial data using open standards, ensuring rebuild partners can work together more efficiently.

**The Open Data and Open API Support** project encourages the development of smart phone apps using open government data, for example services giving Cantabrians up to date road closure information.

**The Property Data Management Framework** will make it easier to share accurate, reliable, and connected data about land parcels, titles, rating units, buildings, addresses and ownership.

**The Forward Works Spatial Coordination** project helps agencies share information about current and planned horizontal infrastructure and built environment construction, and repair and maintenance activities, enabling them to visualise planned repairs by location and time, to help minimise disruption and ensure efficient planning and coordination.

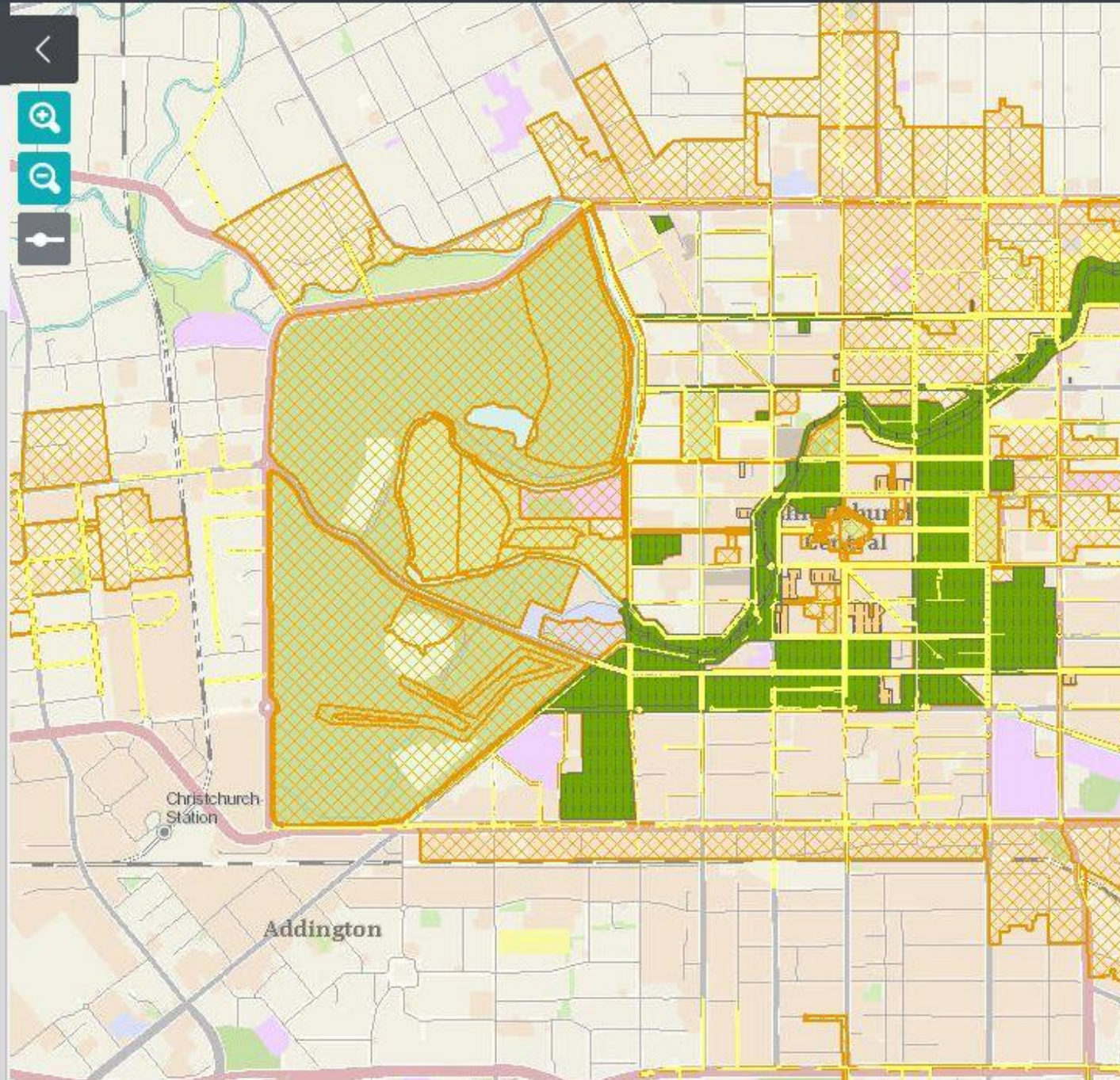
**The Geospatial Data Discovery Project** will make it easier for recovery agencies, businesses and community groups to discover and use the wealth of publicly accessible location based information, and make confidential or not yet released data easier to discover and securely share between relevant agencies

**The Utilities Data Access project** will ensure recovery agencies and construction companies involved in the rebuild have access to up to date utilities network asset and forward works information.





## Map Layers

 Lane Drop Capacity Reduction + Stormwater + Water Supply + Sewer + Electricity + Gas + Telecommunication + Fibre + Car Parking - On Street + Car Parking - Off Street Horizontal Projects Vertical Projects + CCC + CCDU + CERA + Private Sector Events Clashes Contextual Data





# FIG Working Week 2016

CHRISTCHURCH, NEW ZEALAND 2-6 MAY 2016



from disaster

## Forward Works Viewer

> BASE MAP



STAGES

CLASHES (6)

Construction Package 1 & 2  
- East Frame: Block B  
(Gloucester to Hereford)

147 Days

Start: 02/12/14  
End: 25/06/15

Project Summary

ID: 34  
Type: Vertical Construction  
Status: Construction





# FIG Working Week 2016

CHRISTCHURCH, NEW ZEALAND 2-6 MAY 2016

Recovery

from disaster

## Property Data Management Framework





# FIG Working Week 2016

CHRISTCHURCH, NEW ZEALAND 2-6 MAY 2016

Recovery

from disaster

## Integrated property services

### 1. DISCONNECTED PROPERTY INFORMATION



### 2. FIND WHO PRODUCES AND USES PROPERTY INFORMATION



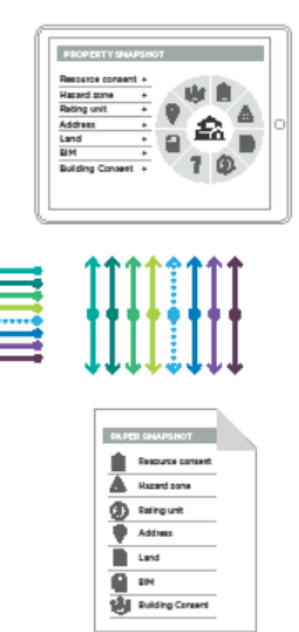
### 3. DRIVING CHANGE



### 4. CONNECTING PROPERTY DATA



### 5. OPEN ACCESS





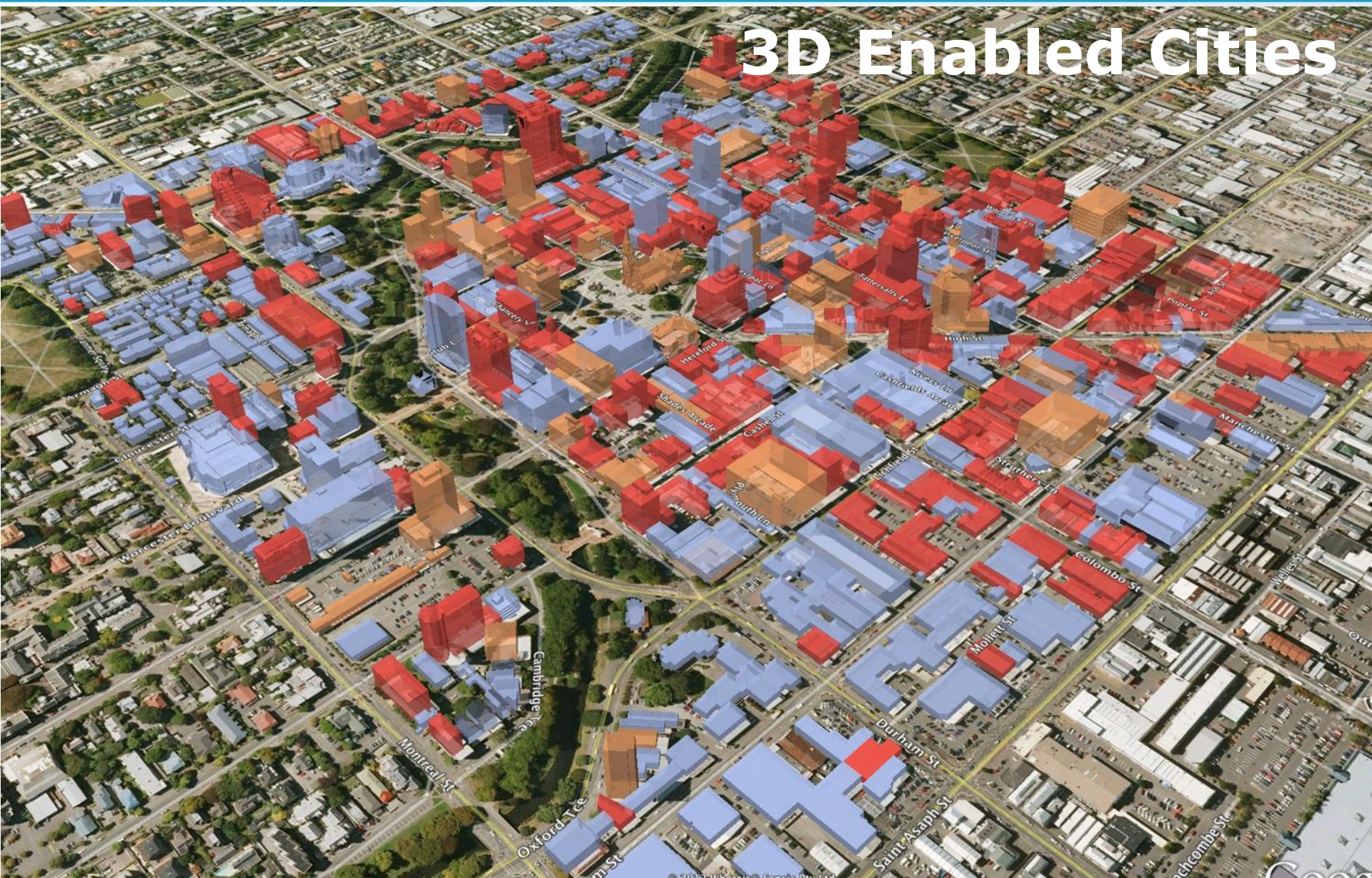


# FIG Working Week 2016

CHRISTCHURCH, NEW ZEALAND 2-6 MAY 2016

Recovery

## 3D Enabled Cities







# FIG Working Week 2016

CHRISTCHURCH, NEW ZEALAND 2-6 MAY 2016

Recovery

from disaster

## Lessons:

**Partnership buy-in**  
**Technical complexity**  
**Resource availability**  
**Opportunity v's Ownership**  
**Exit strategy**  
**Benefits realisation**



Platinum Partners:



Diamond Partner

