

FIG

# FIG WORKING WEEK 2017

Helsinki Finland

29 May - 2 June 2017

Presented at the FIG Working Week 2017,  
May 29 - June 2, 2017 in Helsinki, Finland

## Widen your view with SKETCH 'n MATCH

Empowering participatory planning by  
envisioning the future together

Mark Obbink, Kadaster, the Netherlands

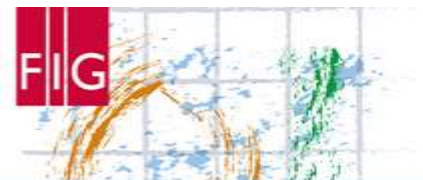
Surveying the world of tomorrow -  
From digitalisation to augmented reality

Organised by



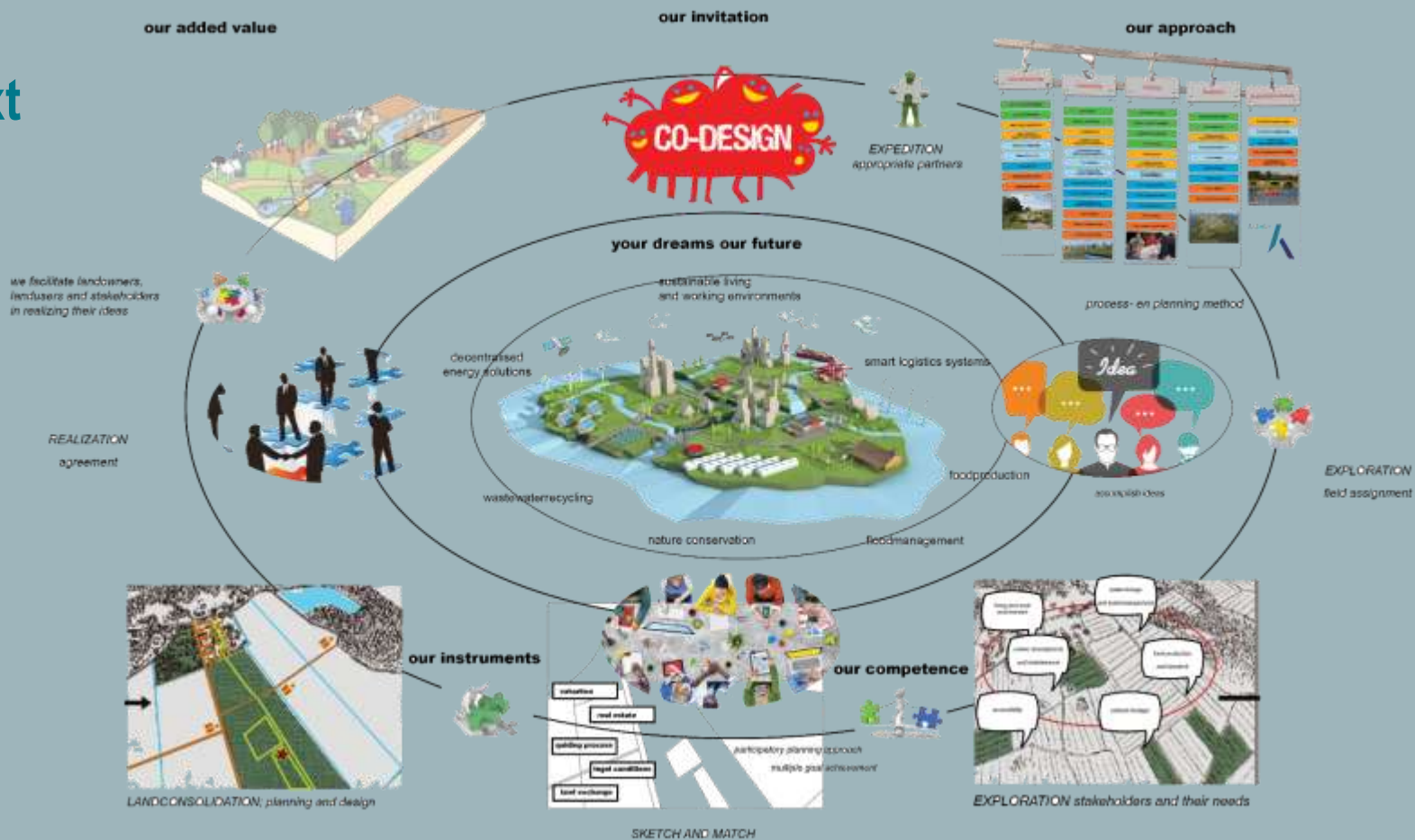
Platinum Sponsors:

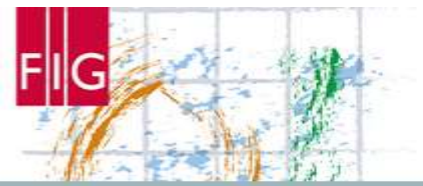




# FIG WORKING WEEK 2017

## Context

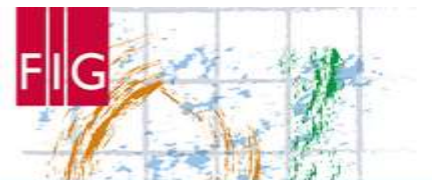




## Statement

- the best way to realize plans is to mobilize local energy and knowledge
- not by discussing an already developed plan or concept, but by helping people to develop their own plan together

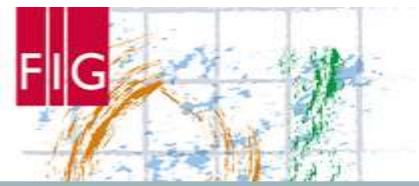




# FIG WORKING WEEK 2017

Let's widen our view

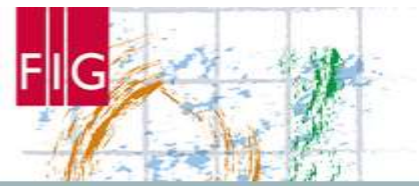




# FIG WORKING WEEK 2017

## Why Sketch 'n Match?

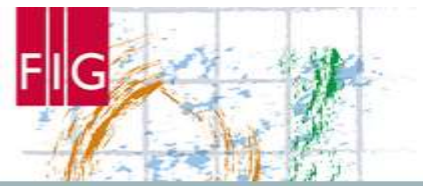
- response to a changing society
- reaction to accumulation of plans from different policymakers



## What is Sketch 'n Match?

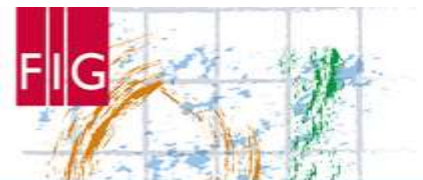
it is all about

- *images and maps*
- *joint decision-making*
- *defining everybody's prerequisites*
- *producing a spatial plan*



## How Sketch 'n Match works

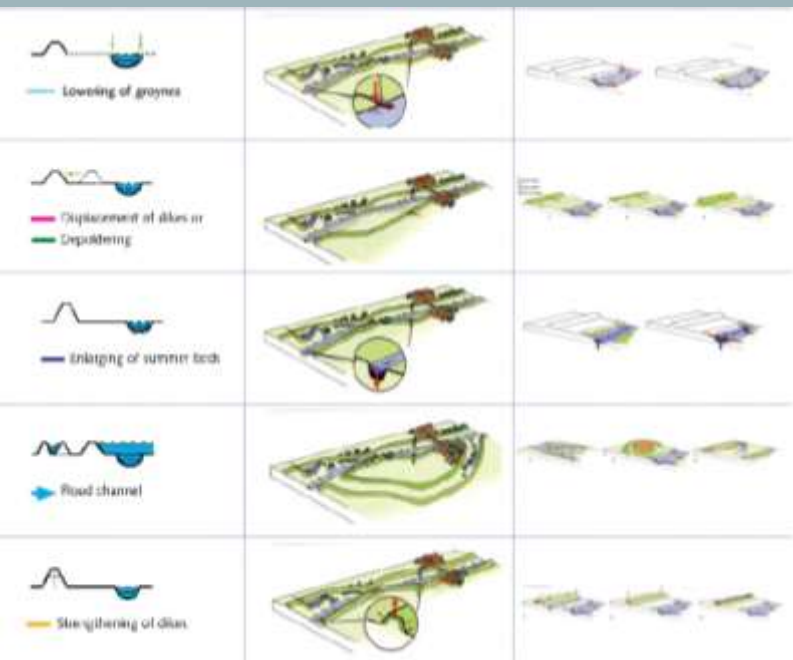
- *involve people in an active way at an early stage of the planning process*
- *pressure cooking; series of intensive interactive sessions*
- *create a level knowledge playing field*
- *together draft a plan*



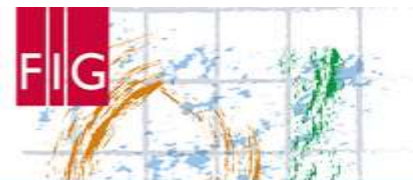
# FIG WORKING WEEK 2017

## Show me Sketch 'n Match

*Room for the River in East Romania*



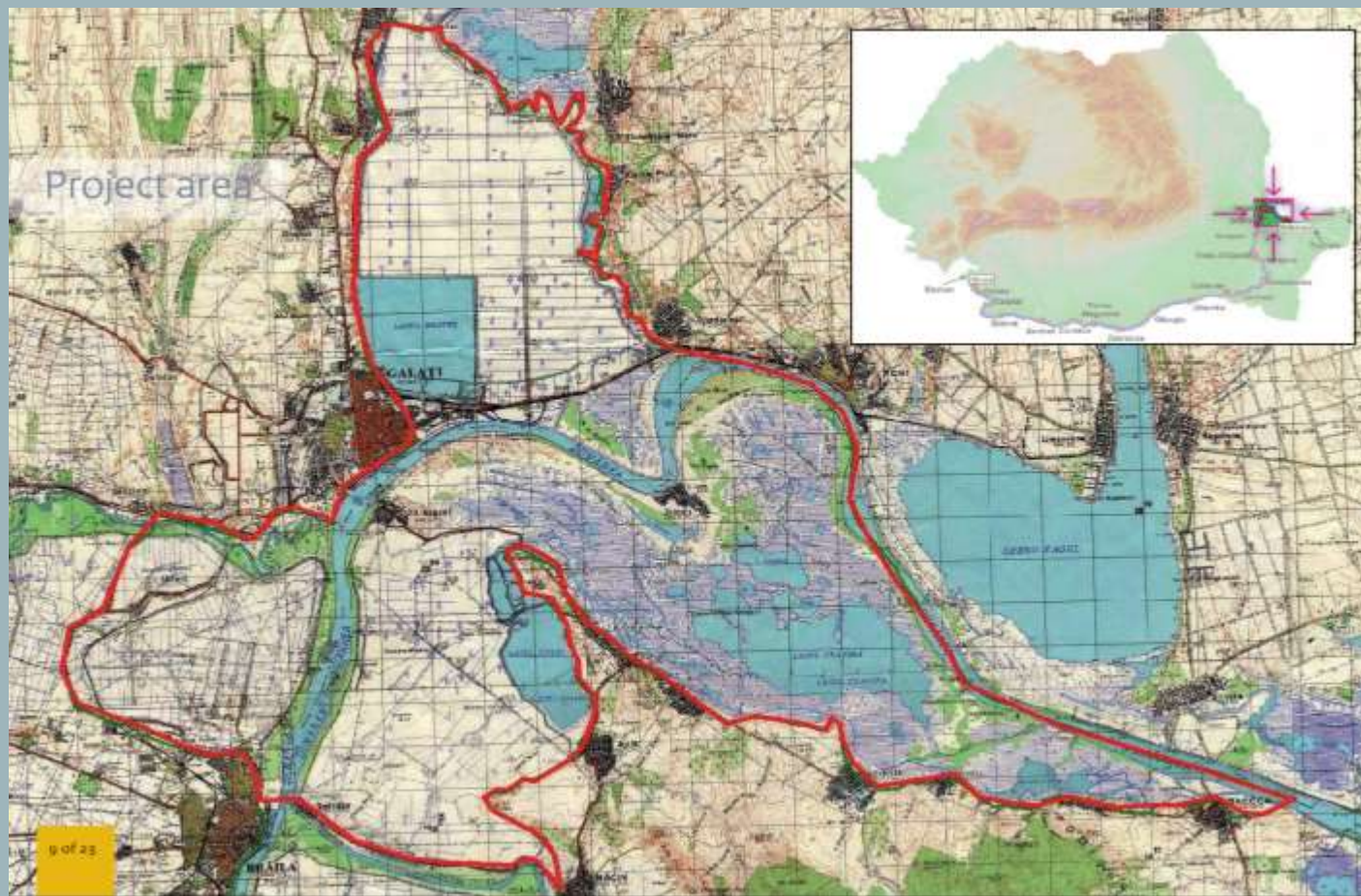


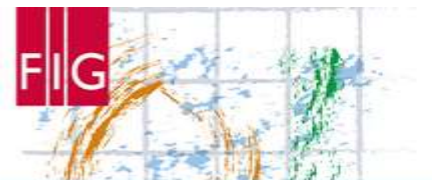


# FIG WORKING WEEK 2017

## Project area

*River Danube  
East Romania  
Galati-Tulcea*





# FIG WORKING WEEK 2017

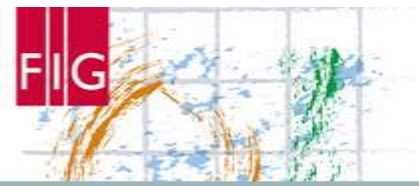
Examining the world of tomorrow

## Issues

*Floodrisk*  
*Agriculture*  
*Nature*







# FIG WORKING WEEK 2017

## Initial goals & program

- start up a bottom-up process
- locally supported
- explore suitable solutions
- keeping in existing policy
- future-proof

### DAY 1

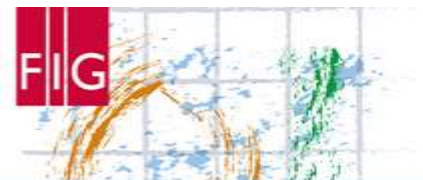
- exploration of design assignment and project area:
- field excursion, analysis by maps
- **problems, qualities and opportunities (potential)**

### DAY 2

- exploration of **solutions**
- calculate probable **effects** with hydraulic modelling

### DAY 3

- **synthesis**: integration of concepts into integrated sketch
- final **presentation** for team members and decision makers

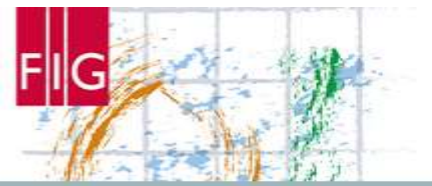


# FIG WORKING WEEK 2017

## Results

The collage illustrates the collaborative process and final outcomes of the FIG Working Week 2017. It features several key elements:

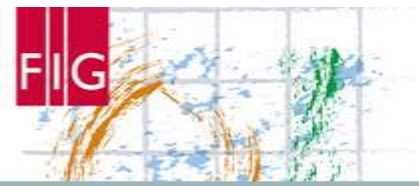
- Top Left:** A photograph showing participants in a meeting room, with the caption "impression of process and results".
- Top Row (Diagrams):** Three hand-drawn diagrams representing different stages of the process:
  - CALITATE:** A diagram showing a river and surrounding areas with various annotations.
  - PROBLEMA:** A diagram highlighting specific issues or challenges related to the river.
  - POTENTIAL:** A diagram illustrating the potential for development or improvement.
- Center:** A large, central hand-drawn map titled "SCHIJA INTEGRATA" (Integrated Plan), which synthesizes the previous stages into a comprehensive urban and river management plan.
- Right Side:** A bar chart and a series of smaller diagrams labeled "MODELLE" (Models), showing different scenarios or options for the river and urban development.
- Bottom Row:** Two photographs showing participants engaged in discussions and working together at tables, representing the collaborative nature of the event.



## Recommendations

- Think **top-down, act bottom-up** in a cyclic way:
  - Use Sketch 'n Match or similar method in policy planning and equip staff
  - Coherent set of objectives at national level, pliable on local level
- Combine **vision with fact** (eg. hydraulic modelling or other calculation models)
- Include **socio-economic aspects** in a broad approach for solutions
- Focus on **common ground** (win-win) instead of contradictions
- Think about an effective **follow up** before starting sketch 'n match session





# FIG WORKING WEEK 2017

The Sketch 'n Match is an invitation to participate,

- Images are the key to these processes
- Planning becomes more effective and creative and, last but not least, more fun
- Who wants to join us?



# amsterdam

**FIG** WORKING WEEK 2020  
MAY 9 – MAY 15



**Smart Surveyors for Land  
and Water Management**

