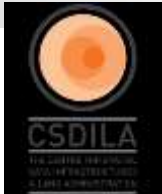
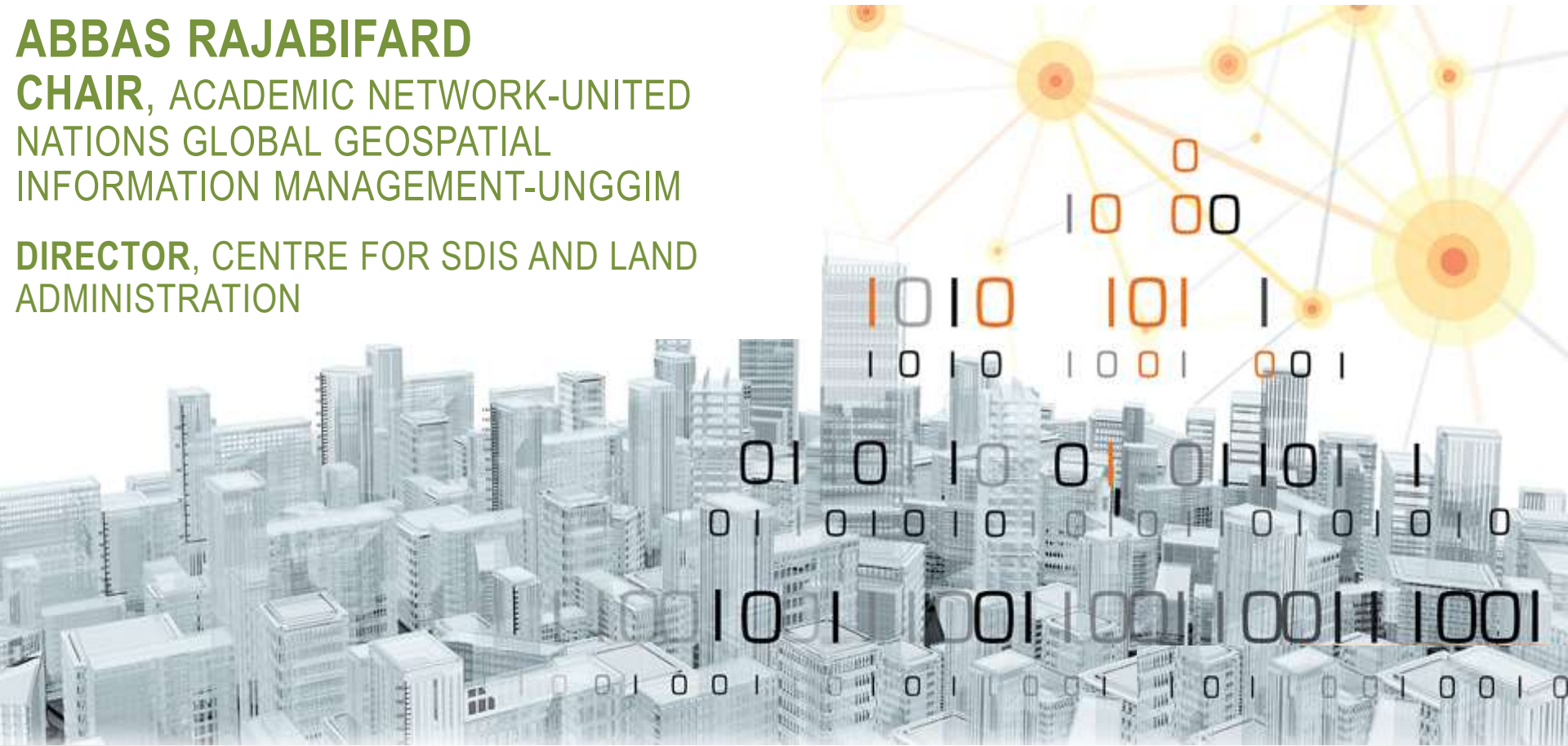


# SPATIALLY ENABLED SOCIETIES AND SMART COMMUNITIES

**ABBAS RAJABIFARD**

**CHAIR, ACADEMIC NETWORK-UNITED  
NATIONS GLOBAL GEOSPATIAL  
INFORMATION MANAGEMENT-UNGGIM**

**DIRECTOR, CENTRE FOR SDIS AND LAND  
ADMINISTRATION**





Sense of the World

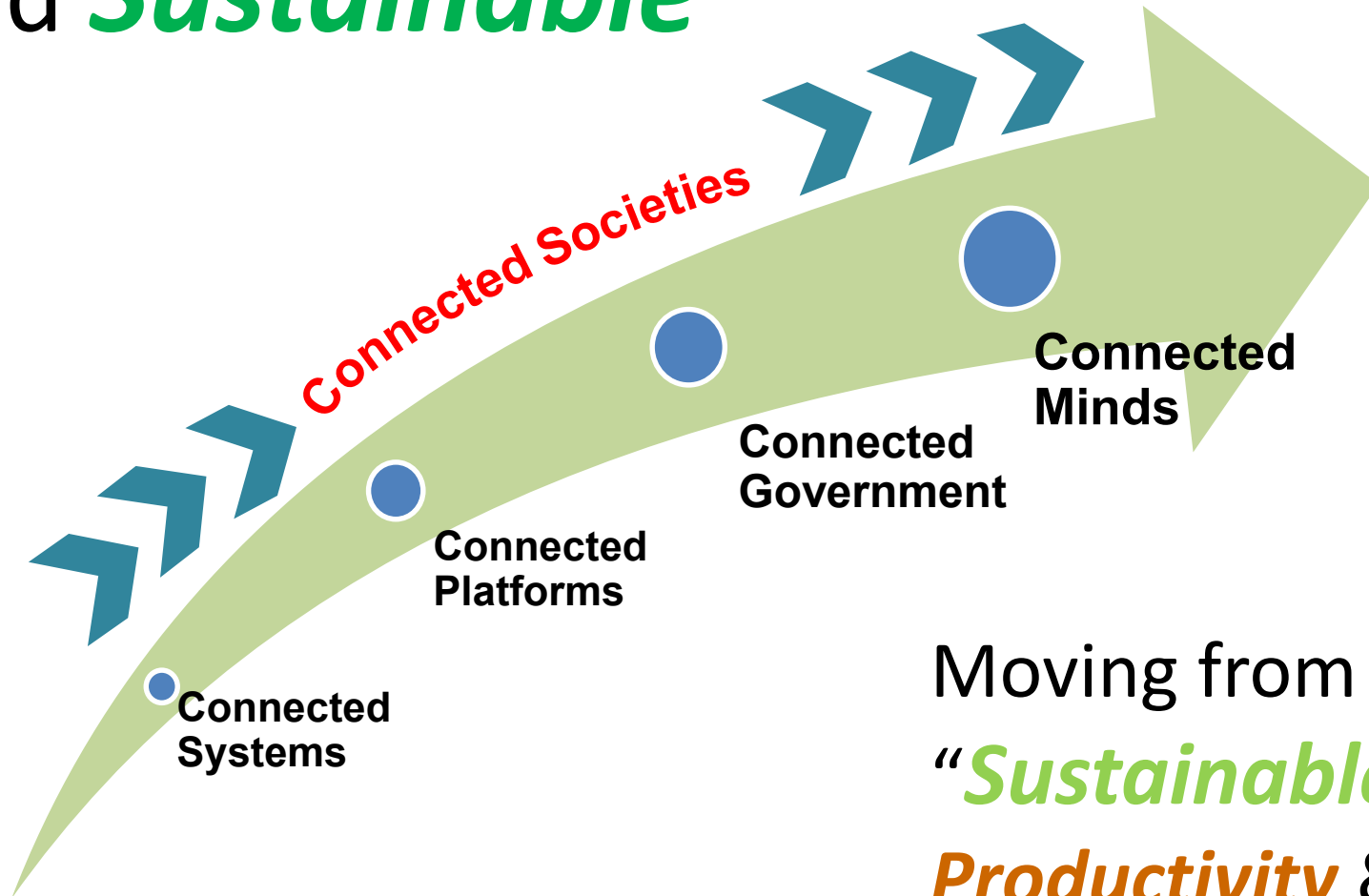
Through the Lens of  
Location & Spatial  
Enablement

past

Smart  
Cities  
Smart  
Community

future

# Future is Smart, *Connected* and *Sustainable*



Moving from being  
“*Sustainable*” to  
*Productivity* &  
“*Regenerative*”



# The “Game Changers”

- Linked Data
- Blockchain
- BIM + Land Admin
- Cloud Computing
- Locally relevant global data sets
- Social Media and Crowdsourcing
- Networks of networks
- Big Data
- Open Data, Open Government
- Open Standards
- Governance

- **Population Growth & Increasing urban complexity;**
- Connected, automated and shared services;
- Digital Economy;
- **Needs and opportunities** in the context of future cities;
- **3D land and property info** to support future planning and management of urban environment (e.g. leveraging BIM, PIM) / **vertical Living;**
- Big Data and cybersecurity;
- Making sense of **smart data**, smart utilities, 4D data.

# Spatial Enablement



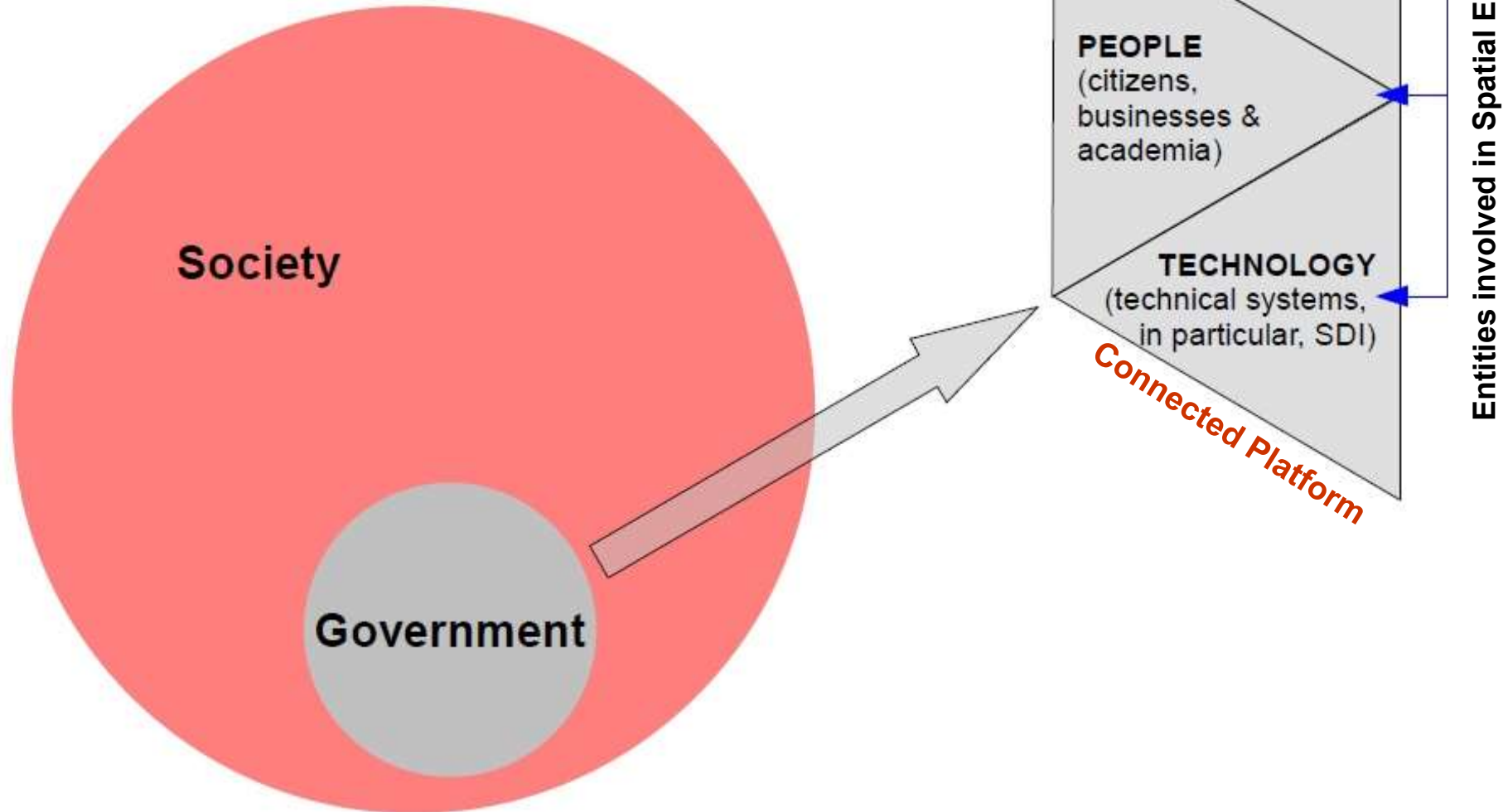
A society or government can be regarded as **spatially enabled** when **spatial information and location** are widely used to manage information and processes **to encourage more creativity** and product development, and they become a ubiquitous **part of eGovernment** and broader **Government ICT strategies.**

and

It is also defined as an **innovator and enabler** across society and a promoter of **Citizen Centric.**

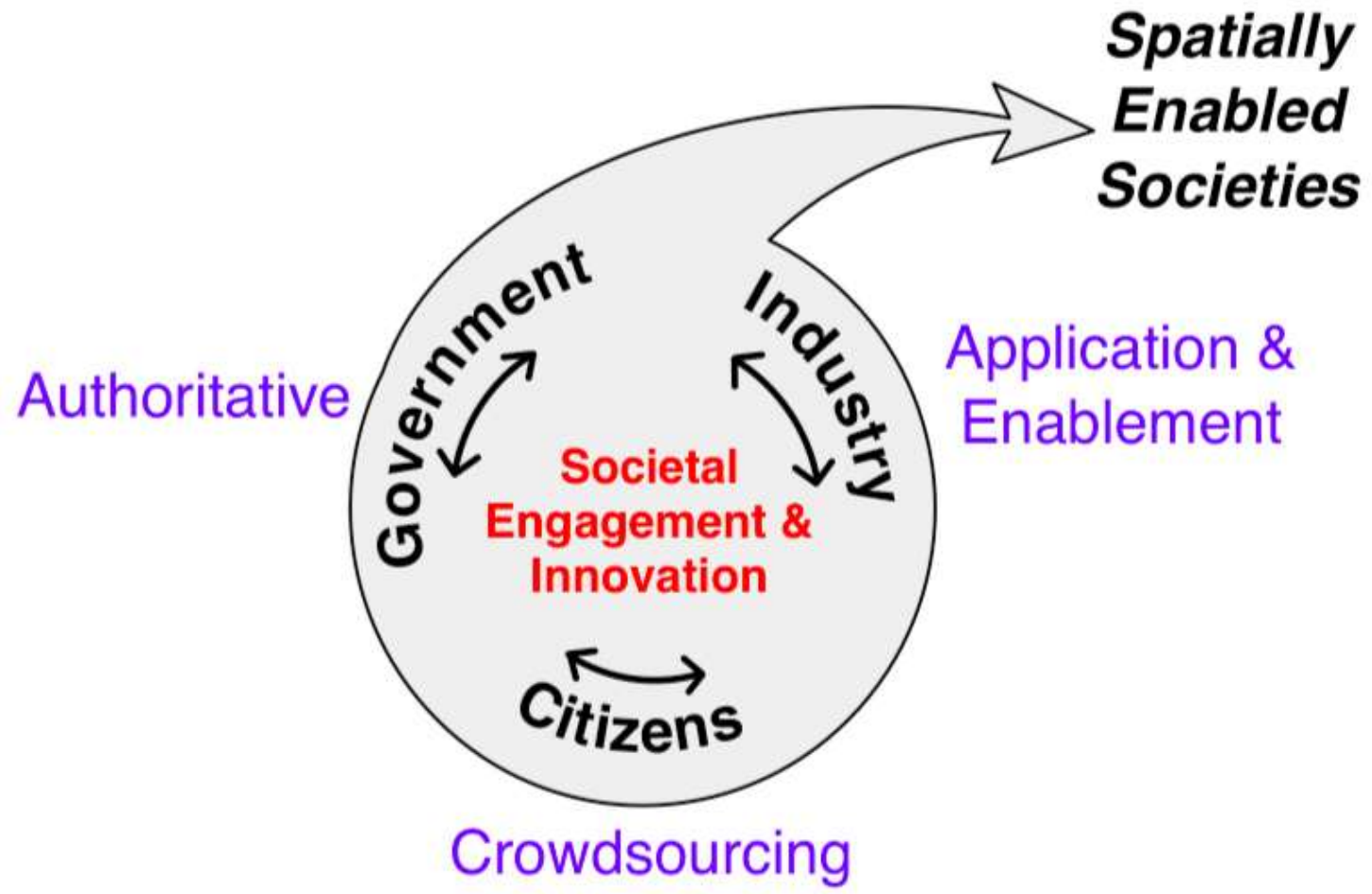


# Spatial enablement





# SES and Societal Engagement



Q:

*What knowledge base,*

## **Location – 4th driver for Decision Making**

*(Why, When, What, Where)*

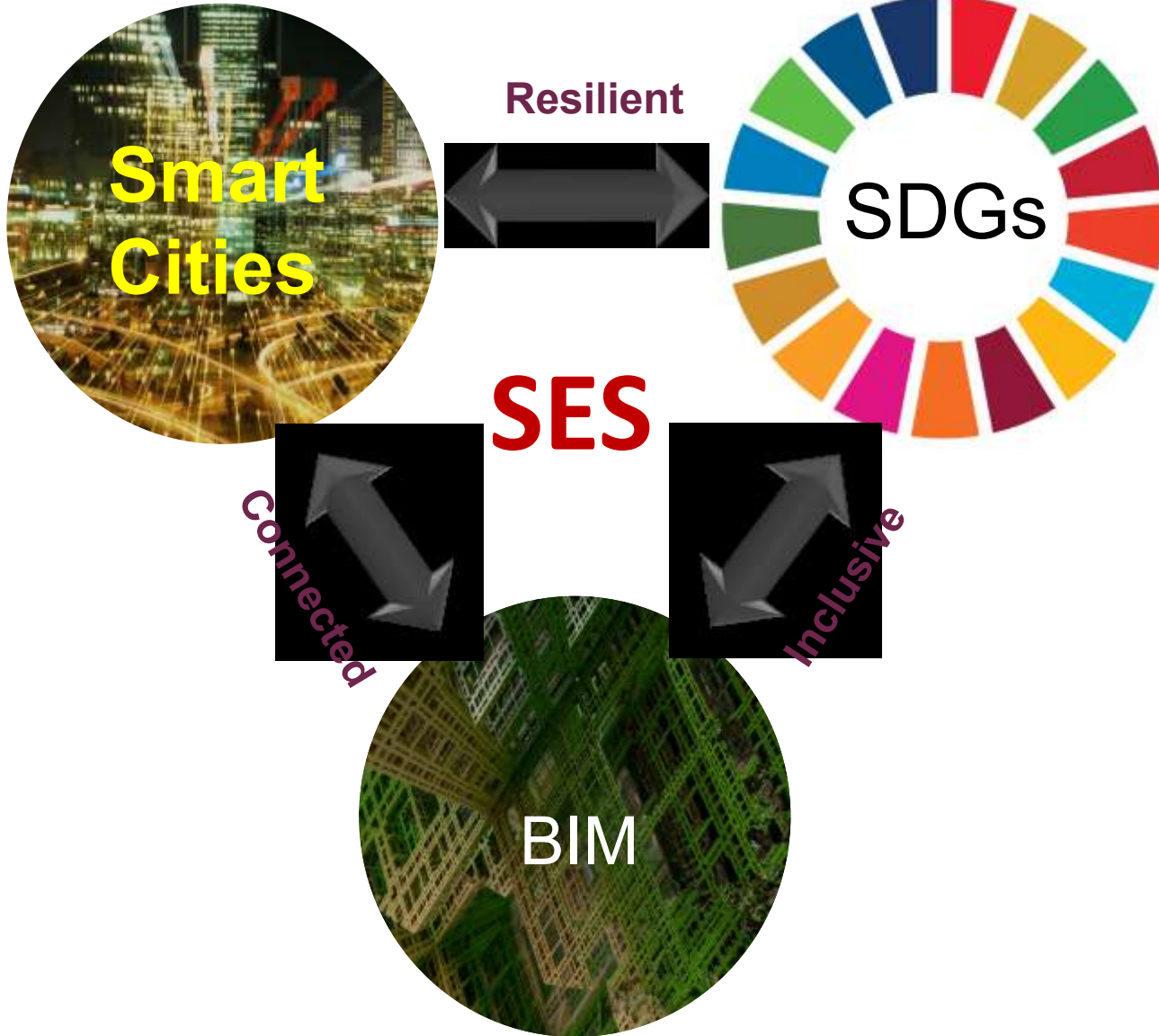
**Location - links us to *where* we are and *what* we are doing.**

*become*

***“smart and sustainable for all”?***



# INTERCONNECTED FUTURE FOR ALL



# SES-Facilitating of Smart Cities and Smart Communities

## Smart City Transitions and $n$ D System Challenges and Opportunities

- ❑ Smart city → smart citizenry
- ❑ 3D →  $n$ D
- ❑ Automation-substitution → transformative innovation

Location

Location

Location

Location

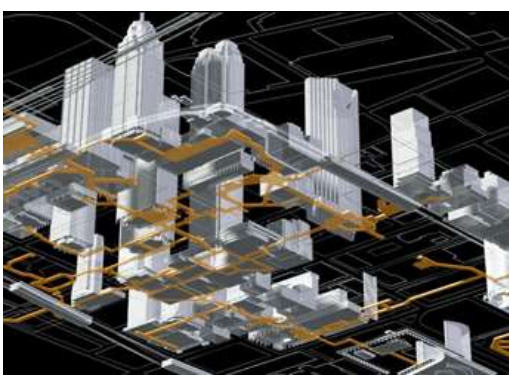
**Technology and society are driving the Data Ecosystem-**  
***Delivering Spatial Enablement***

Location

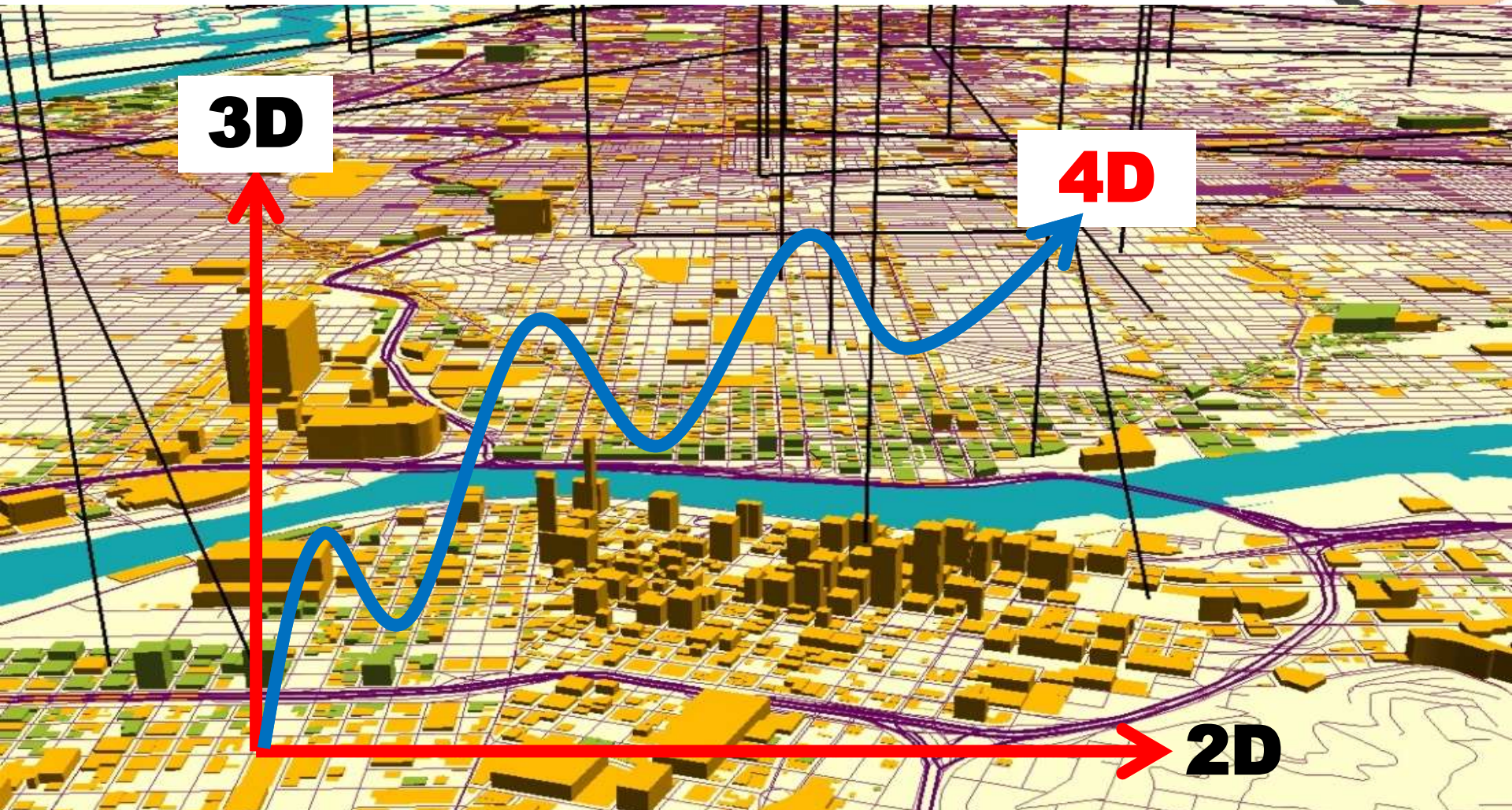
Location

Location

# Complex Urban Environment



# Complex urban Interdependencies



***Need for multi-dimensional land/spatial information.***



# City and *Spatially Enabled Societies (SES)*

CSDILA

THE CENTRE FOR SPATIAL  
DATA INFRASTRUCTURES  
& LAND ADMINISTRATION

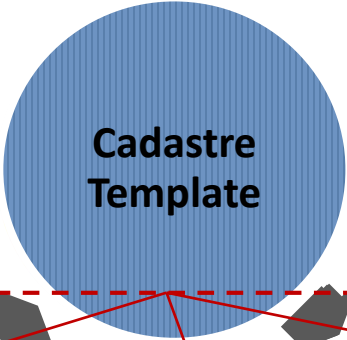
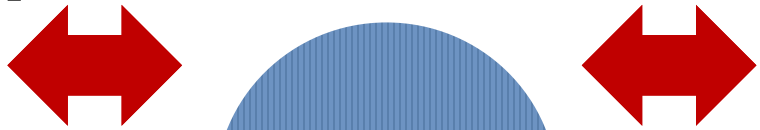
SES





# SDGs/Spatial Enablement/Land Administration

## Spatial Enablement



Mapping social, economic and environmental **interconnections** for sustainable development

Leave No One Behind  
Secure land rights



**Cadastral Template 2.0** to enhance land rights and ownership



Utilise Urban Analytics to enhance social and spatial attributes of communities

# Why the SDGs Matter

## Interconnected Network of Challenges

### Inclusive



Leaving no one behind and improving the quality of life for everyone

### Interconnected



Acknowledging the connectivity of our problems and future challenges

### Global Action



Multi-stakeholder and cross-sector mobilization

17 PARTNERSHIPS  
FOR THE GOALS



  
SUSTAINABLE  
DEVELOPMENT  
GOALS

# SDGs and Future Opportunities



Smart Investment



Smart Policy

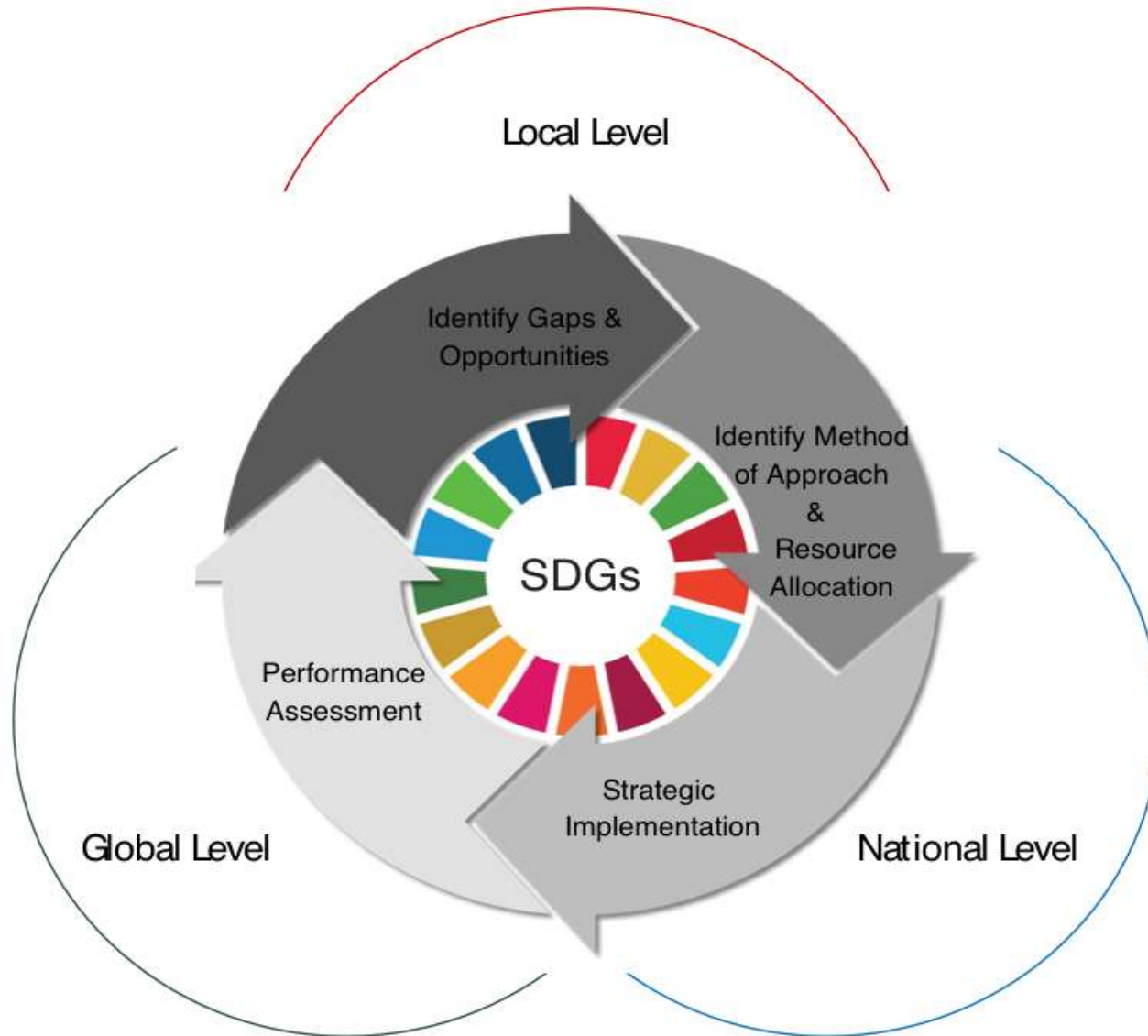


Smart Technology

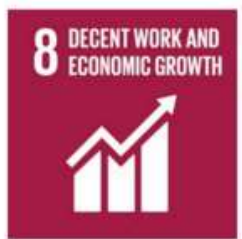
Growing The Innovative Economy



# SDGs and SES Levels



# THE 2030 AGENDA and SDGs



**NEED GOOD LAND SPATIAL RESOURCES**

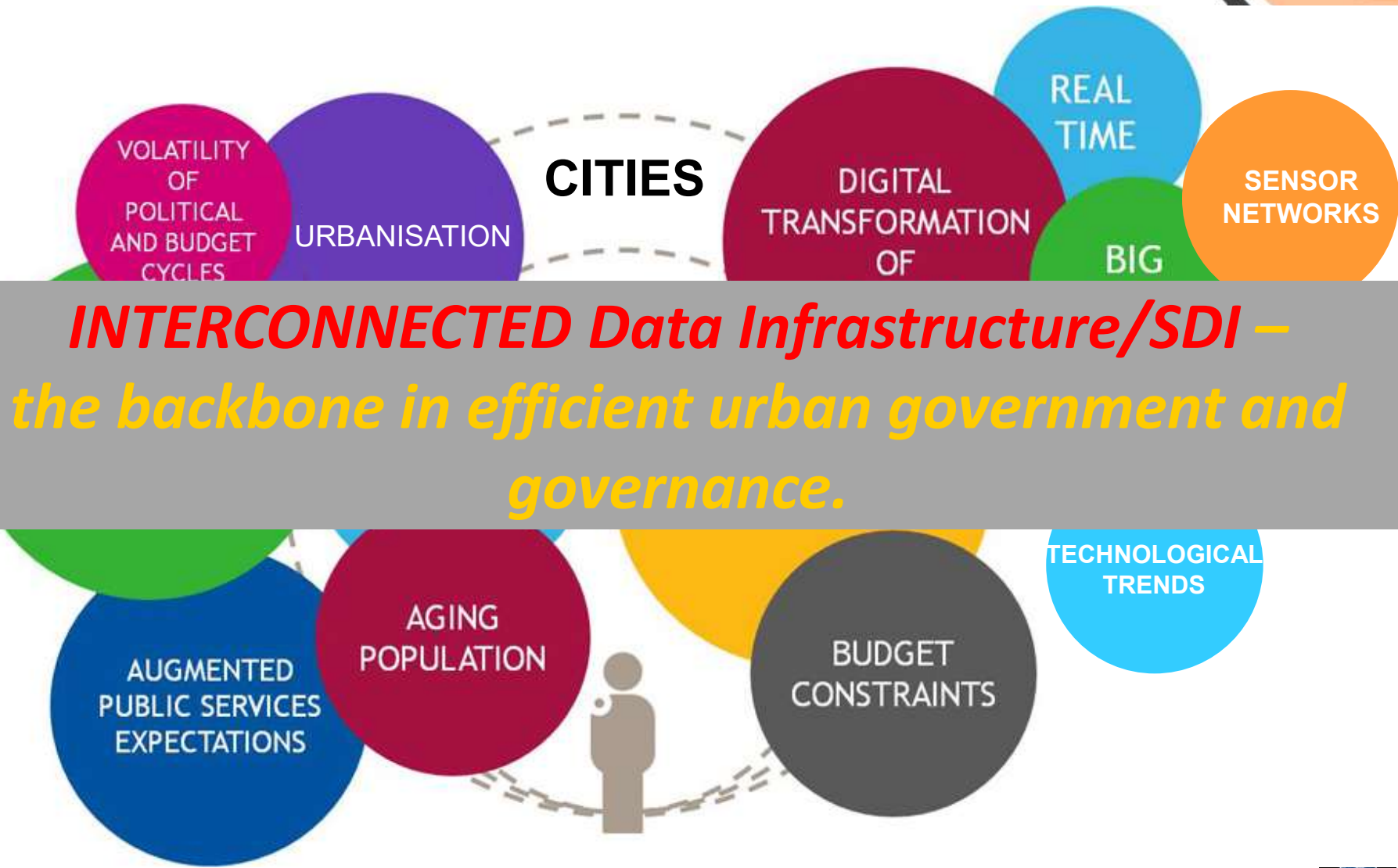
## “Make cities and human settlements inclusive, safe, resilient and sustainable.”

### *Indicators:*

- Housing and basic services
- Transport systems and road safety
- Inclusive and sustainable urbanisation
- Protect and safeguard cultural and natural heritage
- Reduce impact of disasters; Hyogo framework
- Reduce environmental impact of cities
- Access to green and public spaces
- National and regional planning
- Sustainable and resilient buildings using local materials



# Complex Urban Interdependencies



# Multi-scale Analytic Platform



GIS From an **individual** property and building level to a **city level**

*This requires spatially accurate map-base and cadastre as a foundation.*



Precinct



BIM

Building



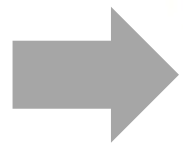
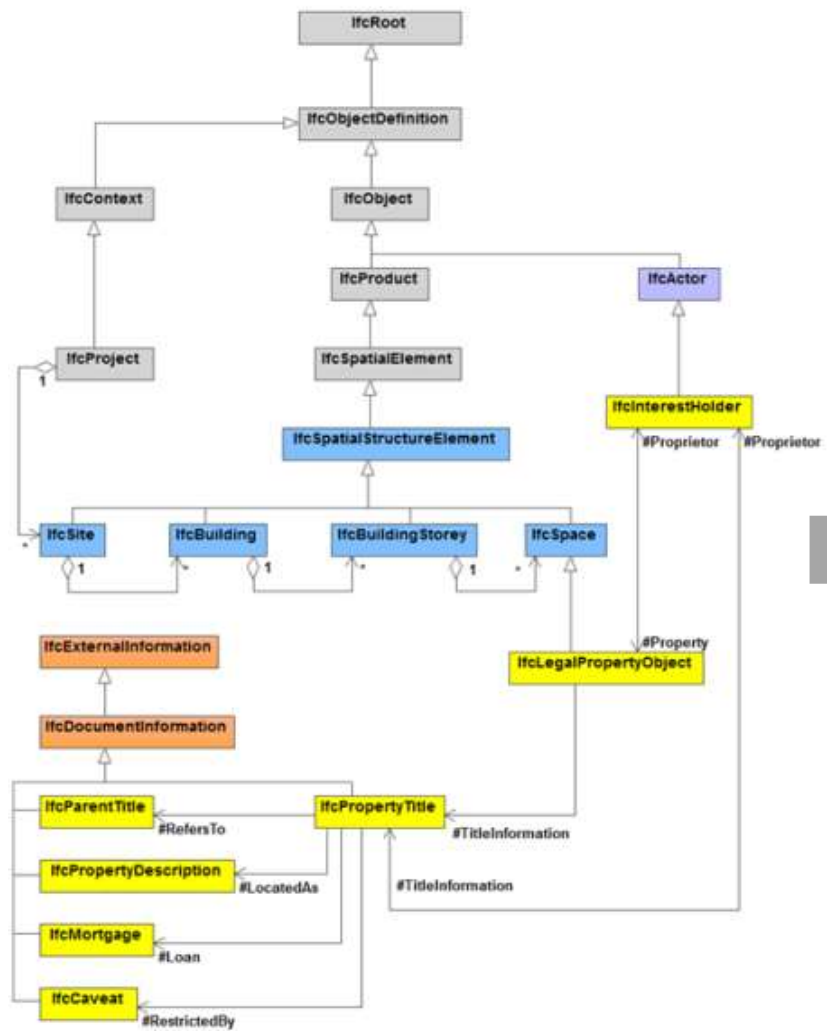
# BIM Advances Sustainability & SDGs



# Digital Construction



# BIM for Urban Land Administration

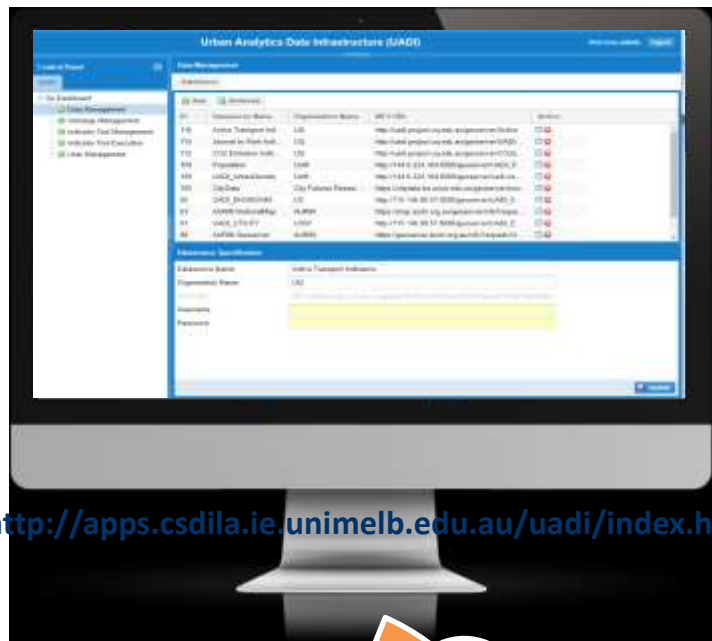


# SES & SDGs - Future Actions

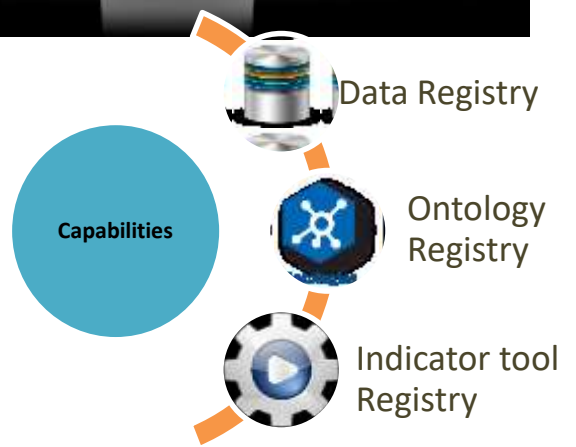


# URBAN ANALYTICS DATA INFRASTRUCTURE

## UADI Dashboard



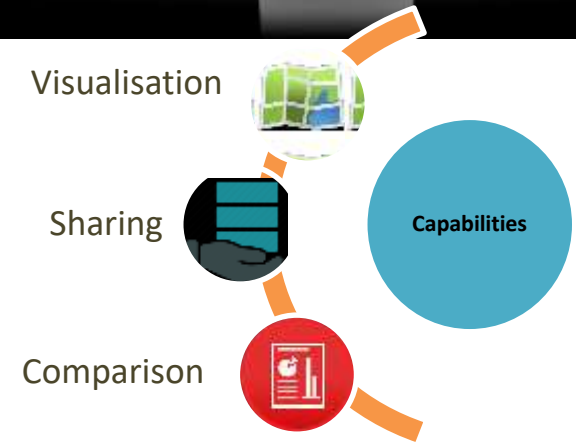
<http://apps.csdila.ie.unimelb.edu.au/uadi/index.html>



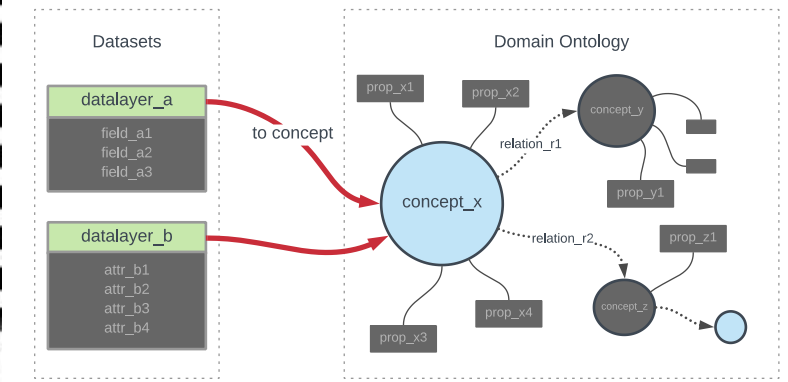
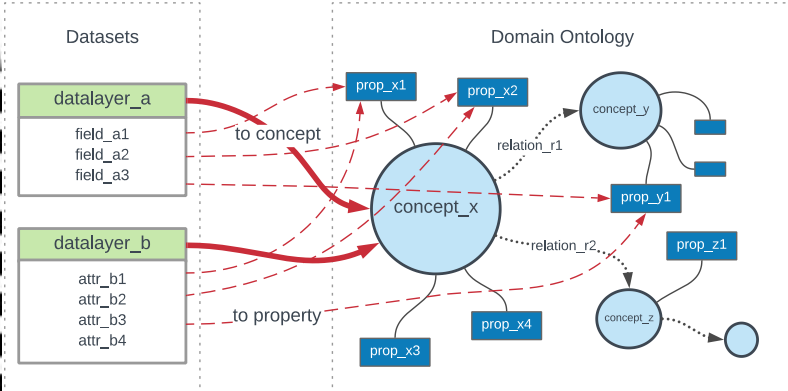
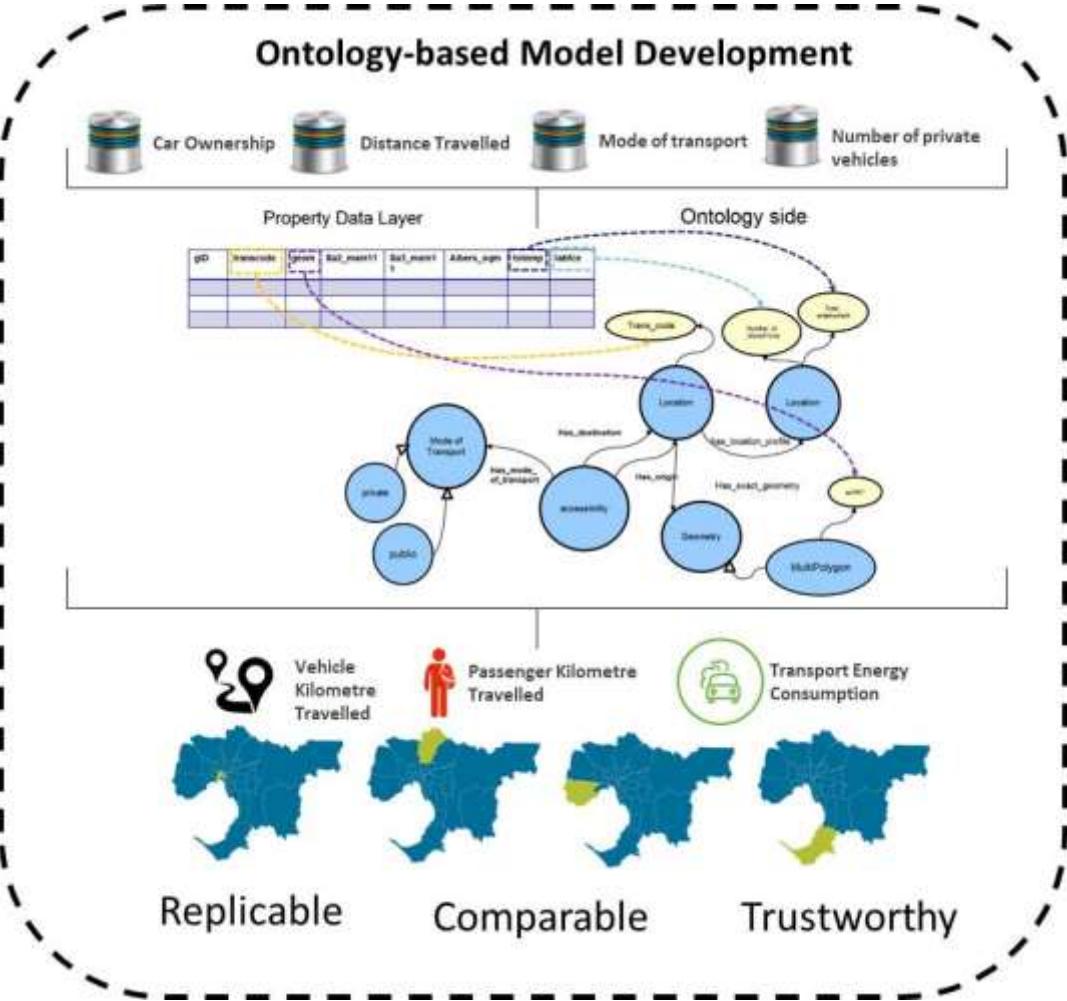
## UADI Portal



<http://apps.csdila.ie.unimelb.edu.au/uadi-portal/index.html>



# ONTOLOGY-BASED URBAN ANALYTICS



# URBAN ANALYTICS DATA INFRASTRUCTURE



Green Space per Capita?

Compact City?

Climate Change

Audit

How can we integrate data to do transparent and comparable analysis in different cities?

Forecast

Prediction

Monitoring

Housing

Demographic

Economic

Transit Oriented Development (TOD)

Housing Intensification

Transportation



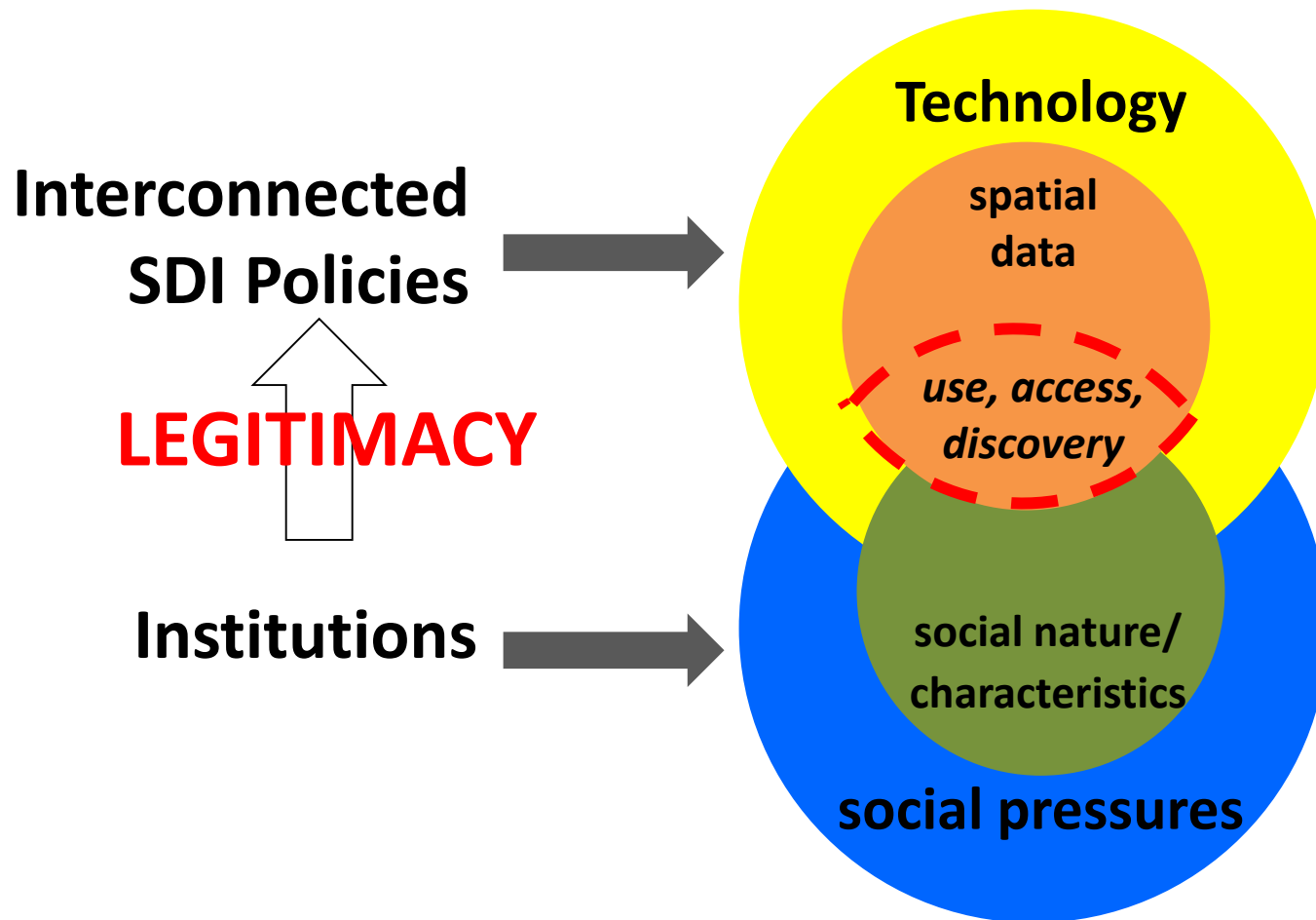
Access to Job?  
Access to employment?

Environmental

Infrastructure



# SES: Need for Awareness/**Social - Technical**







SIDE EVENT

Forum on

**The SDGs Connectivity Dilemma –  
*Urban Settlement, Resilience and  
Sustainability***

The 7th session of the United Nations Committee of Experts on Global Geospatial Information Management, is scheduled to be held from 2 – 4 August 2017

Date: 30 July 2018

Venue: UN Headquarter, NY

**8th Session of the United Nations Committee of Experts on  
30 July – 3 August 2018, NY, USA**



UN-GGIM

United Nations Secretariat  
Global Geospatial Information Management

*Positioning geospatial information to address global challenges*

[ggim.un.org](http://ggim.un.org)



International Symposium and Workshops

# A SMART SUSTAINABLE FUTURE FOR ALL

Enhancing Resilience in a Changing Landscape



24-26 September 2018, The University of Melbourne, Australia

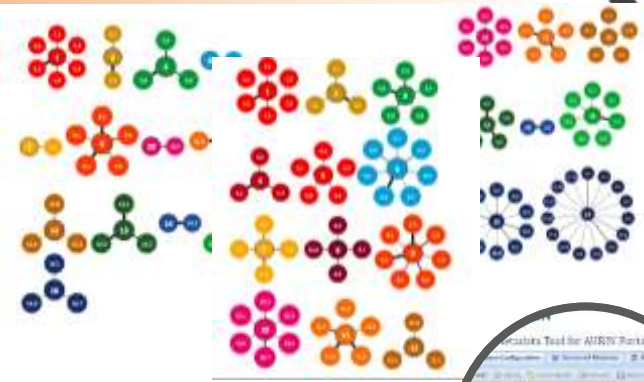


[www.ssf2018.com](http://www.ssf2018.com)

# CSDILA Research Aim Towards SES



Mapping **interlinkages** and prioritize key challenges and opportunities to create **Strategic Road Maps** and **Blueprints**



Develop an innovative **SDG Indicator Registry Infrastructure** utilizing **ontologies** clarify interlinkages between targets and indicators-  
UNGGIM Academic Network



Improving Resilience and Resilience Impact of National Land and Geospatial Systems


**WORLD BANK**

2017 – 2018 • Case studies

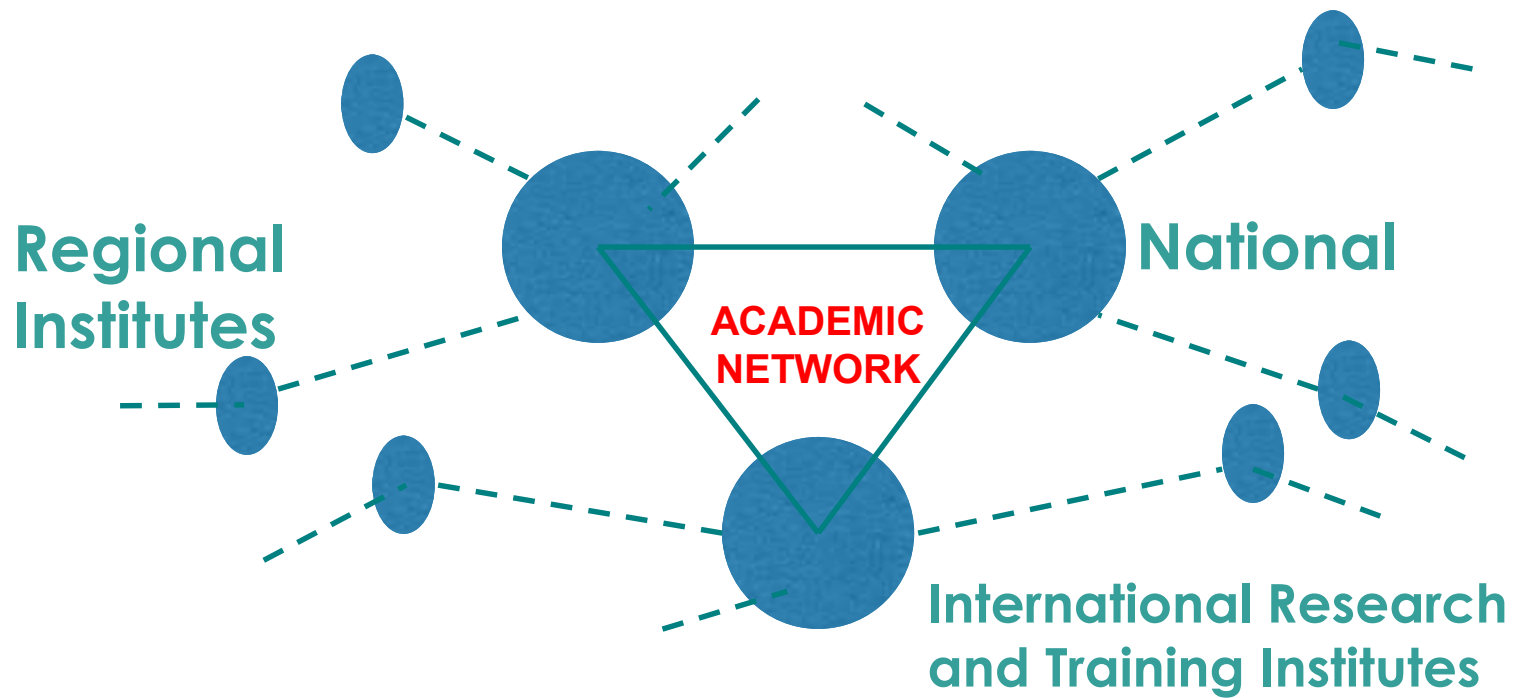


Using data collected by **Cadastral Template 2** from +50 countries to discuss global trends and propose effective local, national and global solutions



 Schweizerische Eidgenossenschaft  
Confédération suisse  
Confederazione Svizzera  
Confederaziun svizra

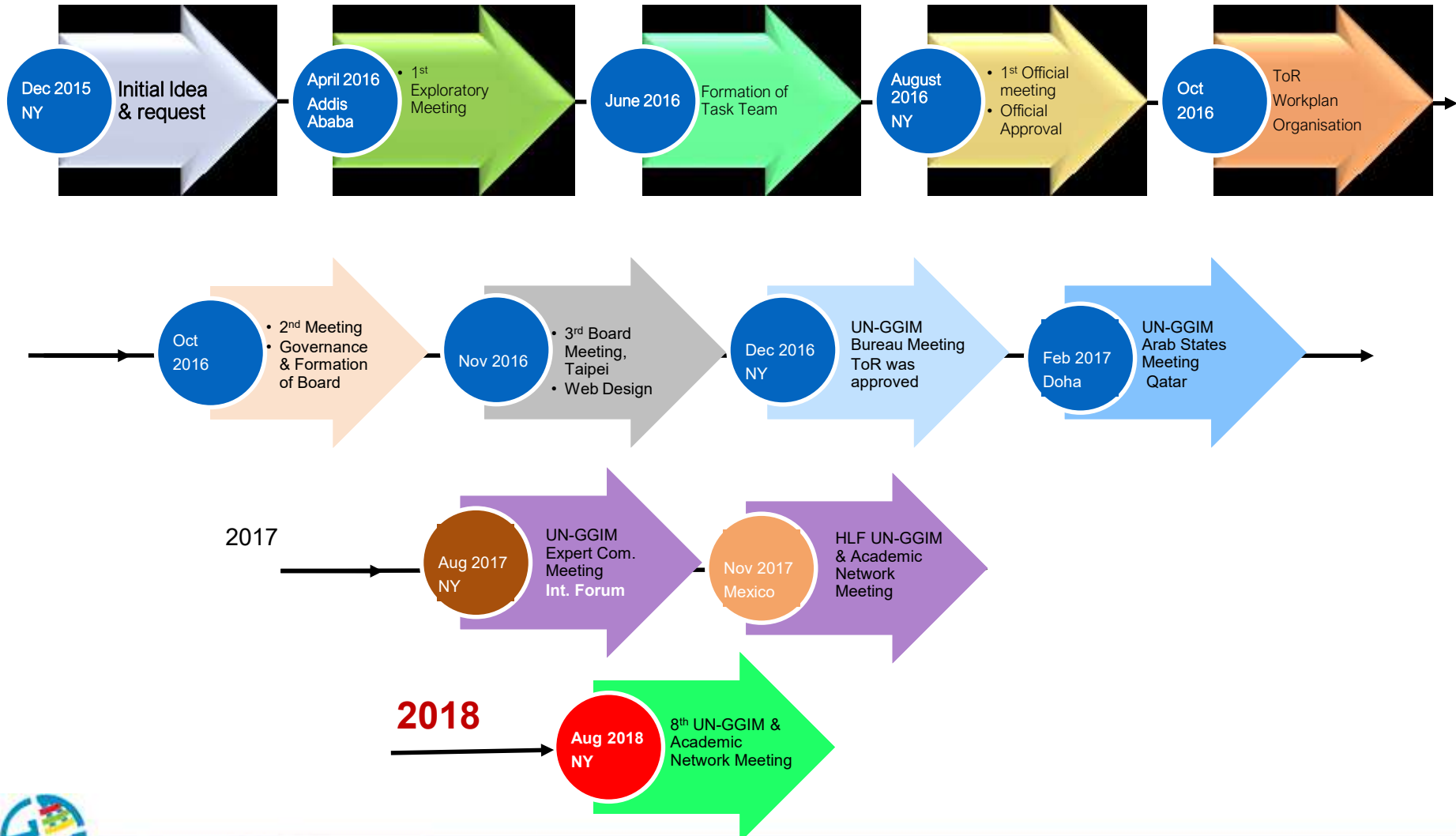
# Academic Network



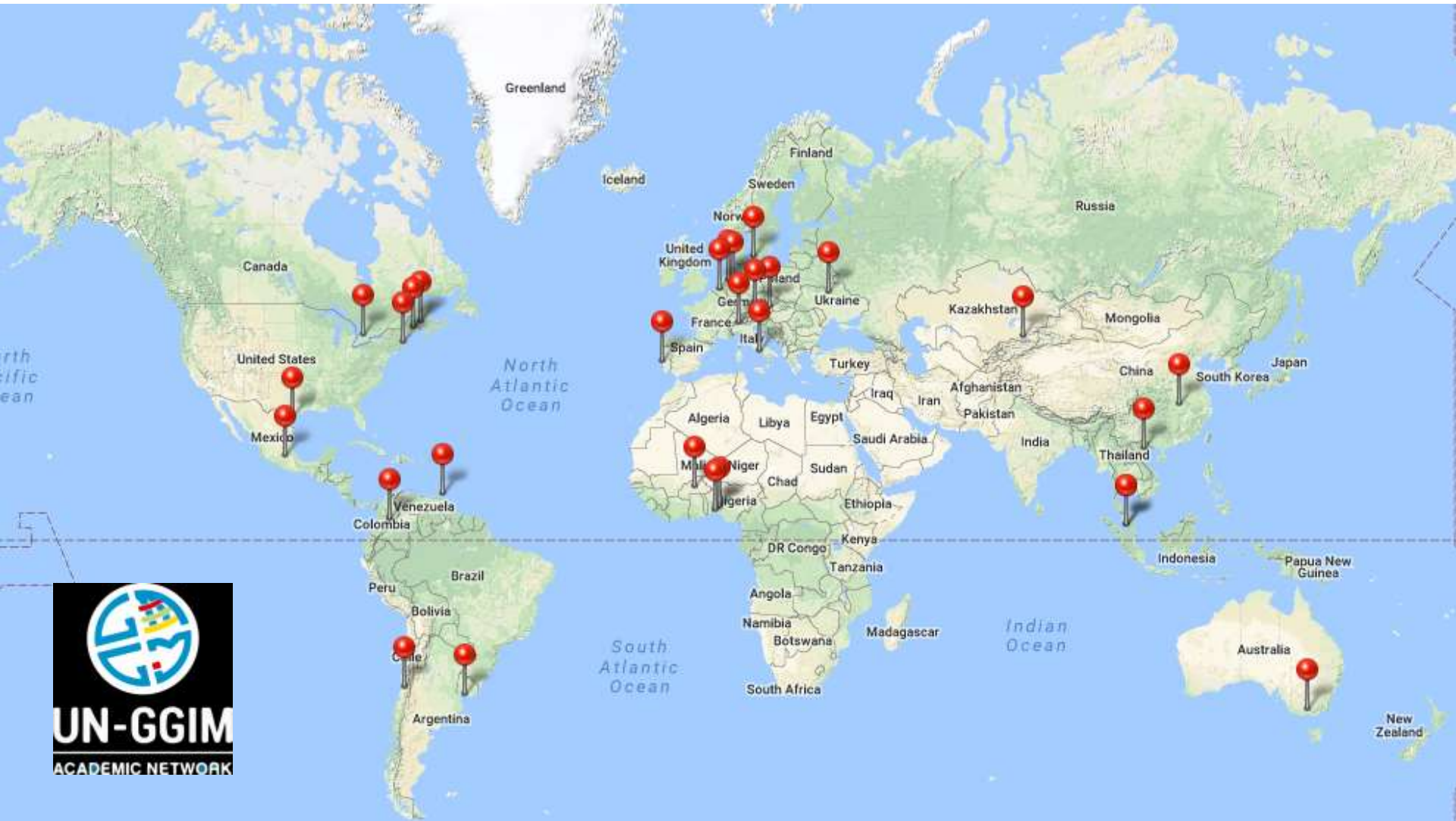
# Academic Network

- The **Academic Network** is a coalition of recognized universities, research and education centers or equivalent involved in the research, development and training on geospatial and land information and related matters.
- The **Academic Network** is a platform for the academic community to contribute and support UN-GGIM in achieving its vision and goals and as a **strategic arm** to empower their process in the form of strategic knowledge, research, education and training,
- The **Academic Network** will provide both **research and education capabilities** for UN-GGIM, **its Regional Organisations**, WGs and affiliated members to identify and response to challenges and opportunities in which UN-GGIM can achieve their visions.

# Major Activities and Steps



# Current Members



# Academic Network Website



## V. Attestations and Agreements

### LETTER OF INSTITUTIONAL COMMITMENT

The following statement must be contained on the letterhead of the institution and signed by the President (or similarly named head) of the Institution in a Letter of Commitment. Alternatively, the letter may be provided and signed by a unit head that has authorization to act for the institution as a whole in the matters attested to in the letter.

Required Language in the Letter: "If admitted to the UN-GGIM Academic Network, commits to fulfilling the

[unggim.academicnetwork.org](http://unggim.academicnetwork.org)

### AGREEMENTS AS CONFIRMED BY SUBMISSION OF EOI

• Through its delegates or other specialists, each member organization is expected to contribute substantively to the work of at least one UN-GGIM Academic Network committee or initiative each year. • UN-GGIM Academic Network institutional members are allowed to use the UN-GGIM Academic Network logo on their web sites and in other written materials. • UN-GGIM Academic Network institutional members are banned from using the standard United Nations logo unless they receive explicit written authorized permission to do so. Through the act of submission of this Expression of Interest (EOI) and upon admission to the UN-GGIM Academic Network, our institution agrees to and commits to fulfilling these obligations.

\*

I have read and understand this agreement, and I accept and agree to all of its terms and conditions.



# THANK YOU

[abbas.r@unimelb.edu.au](mailto:abbas.r@unimelb.edu.au)

[www.csdila.unimelb.edu.au](http://www.csdila.unimelb.edu.au)

