

**FIG**  
2018  
ISTANBUL



**Presented at the FIG Congress 2018,  
May 6-11, 2018 in Istanbul, Turkey**

**6-11 May 2018**

**ISTANBUL**

# XVI FIG Congress 2018



**EMBRACING OUR SMART WORLD WHERE THE CONTINENTS CONNECT:  
ENHANCING THE GEOSPATIAL MATURITY OF SOCIETIES**

ORGANISED BY



MAIN SUPPORTERS



PLATINUM SPONSORS



**FIG**  
2018  
ISTANBUL

# XXVI FIG Congress 2018

**6-11 May 2018 ISTANBUL**

**EMBRACING OUR SMART WORLD WHERE THE CONTINENTS CONNECT:**

**ENHANCING THE GEOSPATIAL MATURITY OF SOCIETIES**

# **Joint Analysis of GNSS and InSAR for Deformation Monitoring: A Feasibility Study in Johor, Malaysia**

**by**

**Muhammad Asyran bin Che Amat  
Geodetic Survey Division**

**Department of Survey and Mapping Malaysia (JUPEM)**

ORGANISED BY



MAIN SUPPORTERS



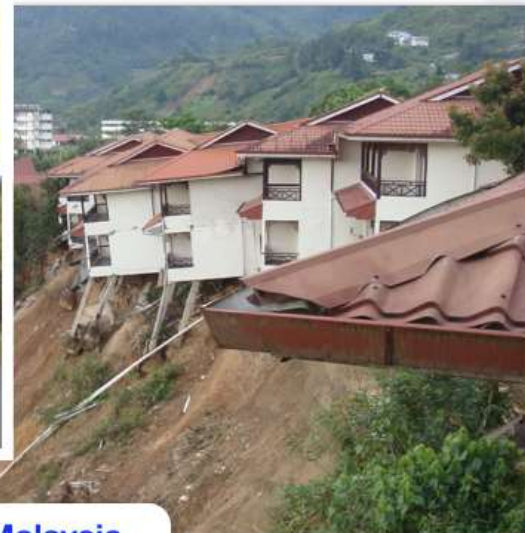
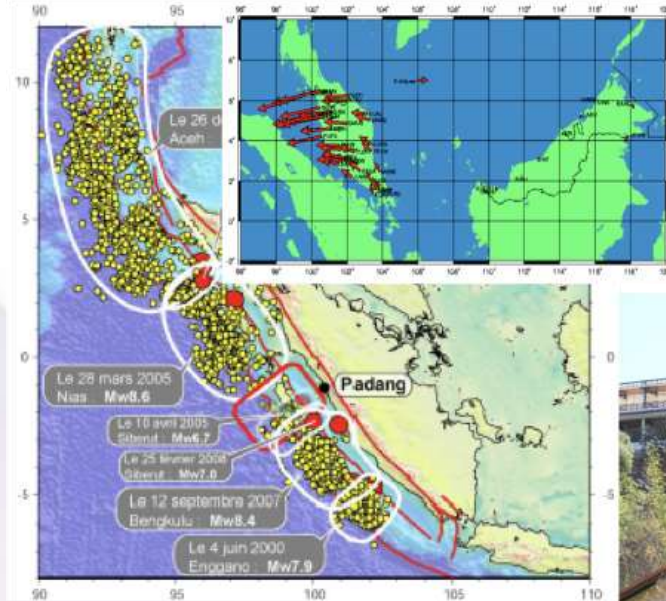
PLATINUM SPONSORS



**6-11 May 2018 ISTANBUL**

**EMBRACING OUR SMART WORLD WHERE THE CONTINENTS CONNECT:**

**ENHANCING THE GEOSPATIAL MATURITY OF SOCIETIES**



**The need for deformation study in Malaysia**

ORGANISED BY



MAIN SUPPORTERS



PLATINUM SPONSORS



6-11 May 2018 ISTANBUL

EMBRACING OUR SMART WORLD WHERE THE CONTINENTS CONNECT:

ENHANCING THE GEOSPATIAL MATURITY OF SOCIETIES



## GNSS Dataset (2007 - 2011)

ORGANISED BY



MAIN SUPPORTERS



PLATINUM SPONSORS



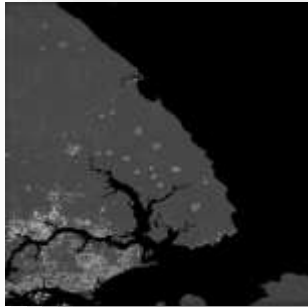
**FIG**  
2018  
ISTANBUL

# XXVI FIG Congress 2018

**6-11 May 2018 ISTANBUL**

**EMBRACING OUR SMART WORLD WHERE THE CONTINENTS CONNECT:**

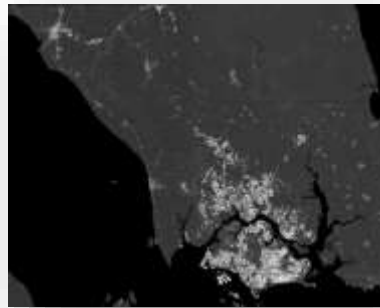
**ENHANCING THE GEOSPATIAL MATURITY OF SOCIETIES**



**34 ERS-1/2 (Track 75)**  
**5 August 1993 - 23 February 2003**



**33 ERS-1/2 (Track 347)**  
**4 May 1995 - 12 November 2010**



**22 Sentinel-1**  
**22 March 2015 - 24 September 2016**

## **SAR Dataset**

ORGANISED BY



MAIN SUPPORTERS



PLATINUM SPONSORS



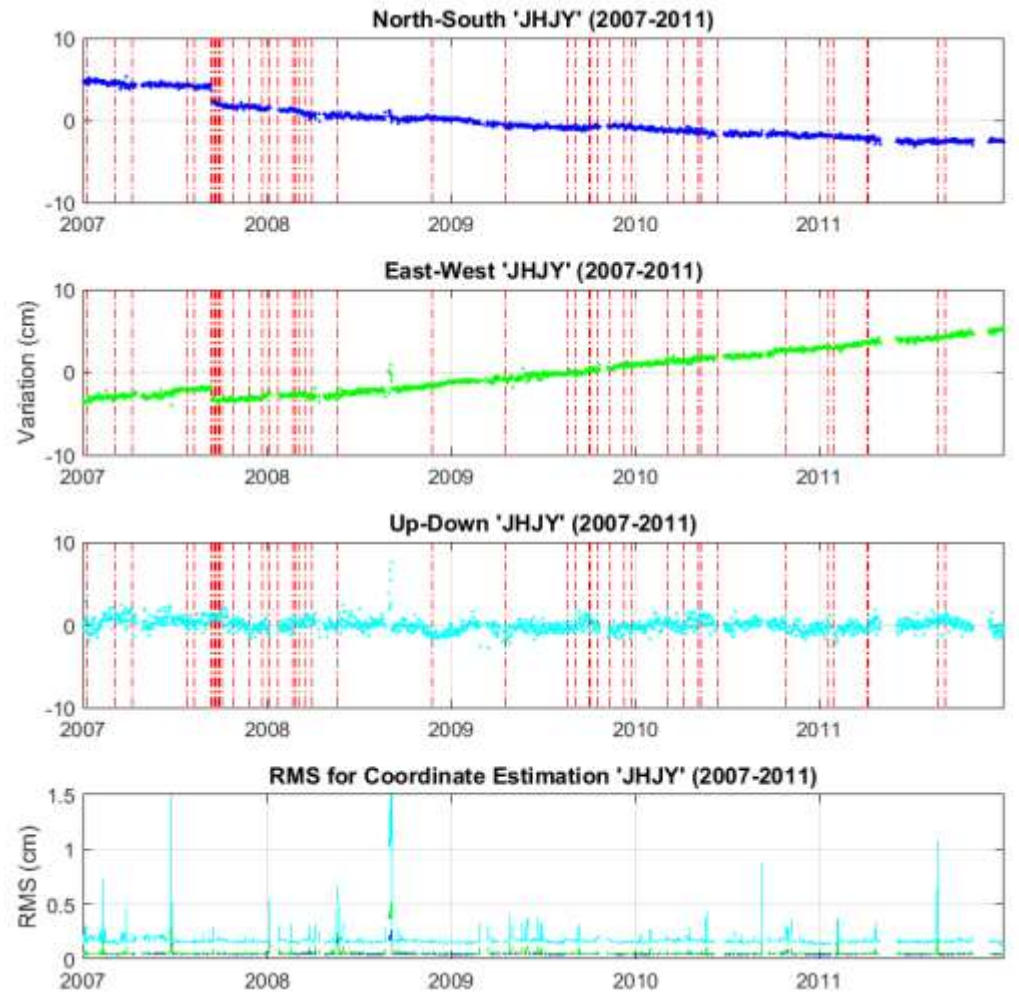


# XXVI FIG Congress 2018

**6-11 May 2018 ISTANBUL**  
**EMBRACING OUR SMART WORLD WHERE THE CONTINENTS CONNECT:**  
**ENHANCING THE GEOSPATIAL MATURITY OF SOCIETIES**



## RAW GNSS Time Series for JHJY station



ORGANISED BY



MAIN SUPPORTERS



PLATINUM SPONSORS

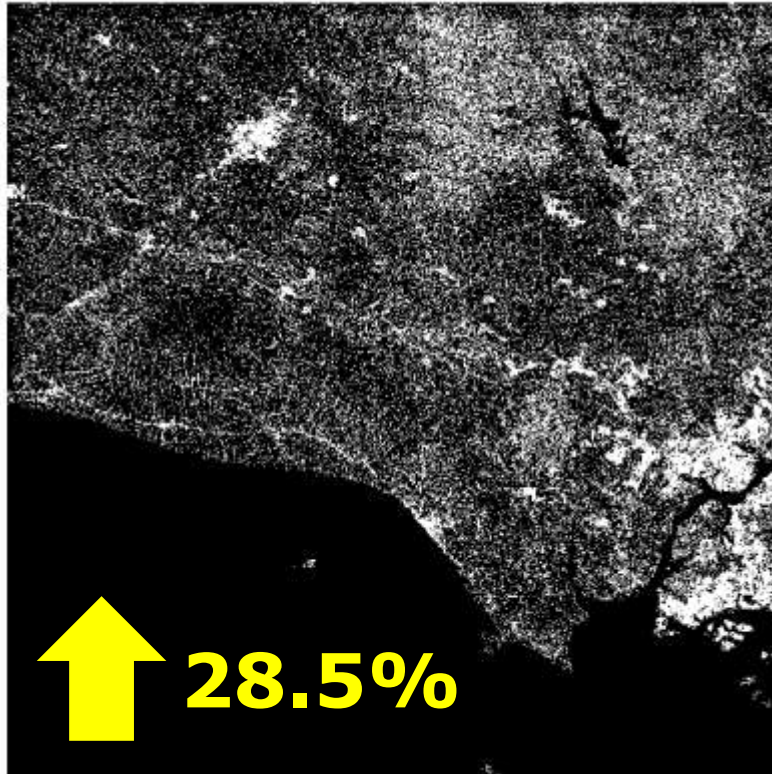


6-11 May 2018 ISTANBUL

EMBRACING OUR SMART WORLD WHERE THE CONTINENTS CONNECT:

ENHANCING THE GEOSPATIAL MATURITY OF SOCIETIES

ISBAS coverage



Standard SBAS coverage



**Coverage comparison  
ISBAS vs standard SBAS**

ORGANISED BY



MAIN SUPPORTERS



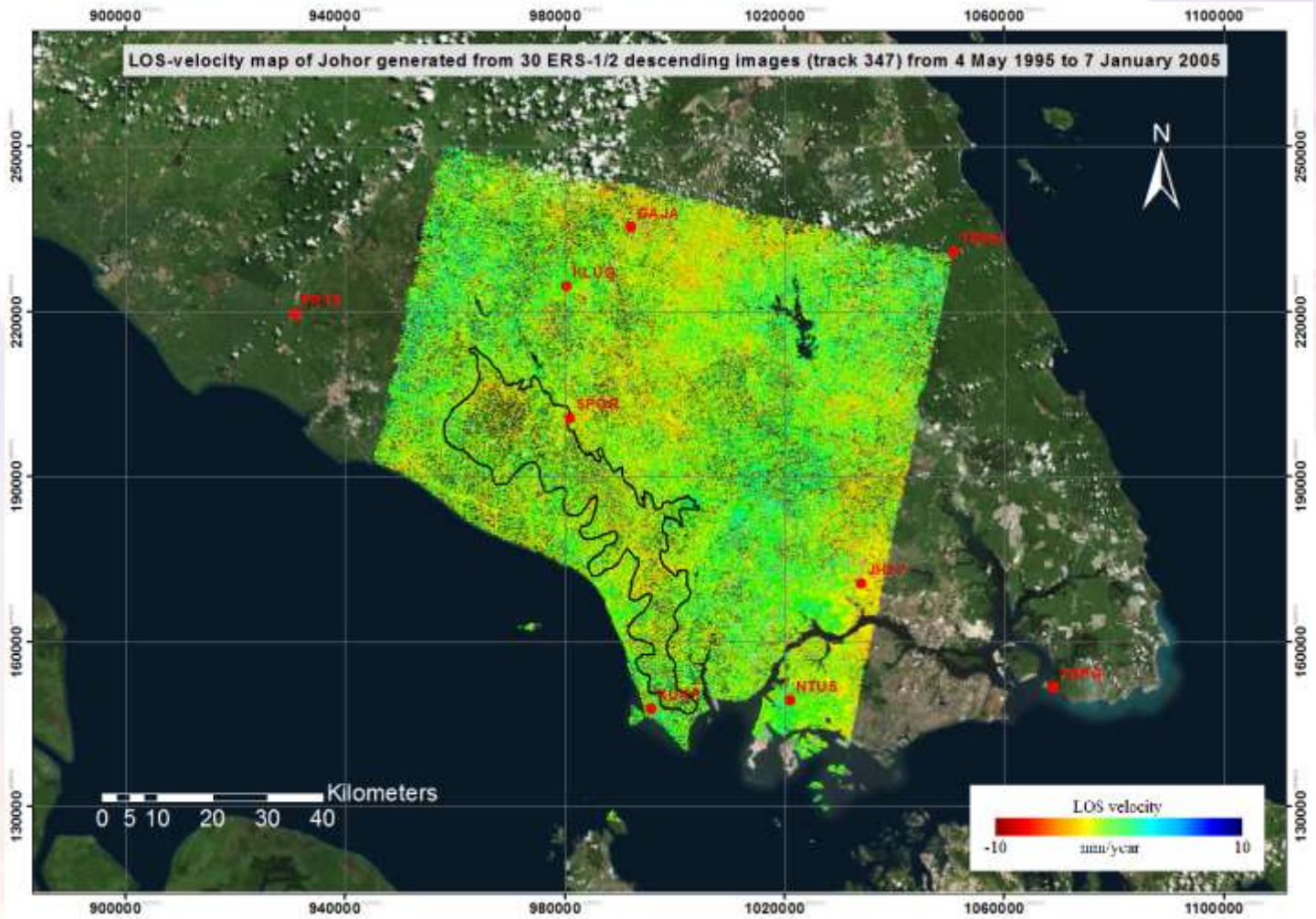
PLATINUM SPONSORS



6-11 May 2018 ISTANBUL

EMBRACING OUR SMART WORLD WHERE THE CONTINENTS CONNECT:

ENHANCING THE GEOSPATIAL MATURITY OF SOCIETIES



ORGANISED BY



MAIN SUPPORTERS



PLATINUM SPONSORS





## Conclusions

### 1. GNSS and InSAR have **complementary features**

- GNSS - successfully quantified movements from the tectonic motion and earthquakes in the surrounding region
- InSAR - identified the local subsidence due to the development of tropical peat land and urbanisation

### 2. Information about the derived velocities from GNSS and InSAR time-series will be **useful to infer the frequency of maintenance works needed for geodetic infrastructures** in the vicinity

### 3. It is expected that integration of these two techniques will continue to develop in light of the newly available **Sentinel-1** satellites

- **Short revisit cycle**
- **Small orbital separation**
- **Accessible for free**



# XXVI FIG Congress 2018

6-11 May 2018 ISTANBUL

EMBRACING OUR SMART WORLD WHERE THE CONTINENTS CONNECT:

ENHANCING THE GEOSPATIAL MATURITY OF SOCIETIES

## Thank You

**Muhammad Asyran bin Che Amat**  
**Geodetic Survey Division**  
**Department of Survey and Mapping Malaysia**  
[asyran@jupem.gov.my](mailto:asyran@jupem.gov.my)

ORGANISED BY



MAIN SUPPORTERS



PLATINUM SPONSORS

