



Presented at the FIG Working Week 2023,
28 May - 1 June 2023 in Orlando, Florida, USA

FIG WORKING WEEK 2023

28 May - 1 June 2023 Orlando Florida USA

Protecting
Our World,
Conquering
New Frontiers

Reality for intuitive BIM-based as-built documentation

Christoph BLUT, Tristan KINNEN, Felix SCHELLONG, Dirk
HEIDERMANN, Guenter BLEIMANN-GATHER, Joerg
BLANKENBACH
Aachen, Germany



Organized By



Diamond Sponsors



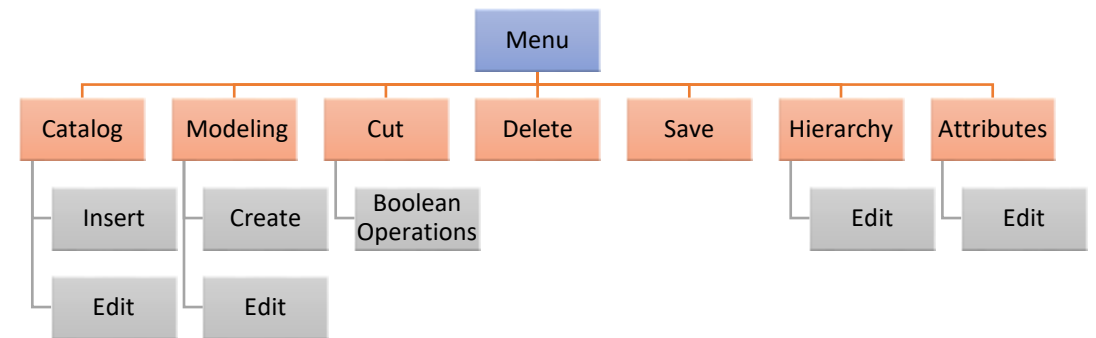
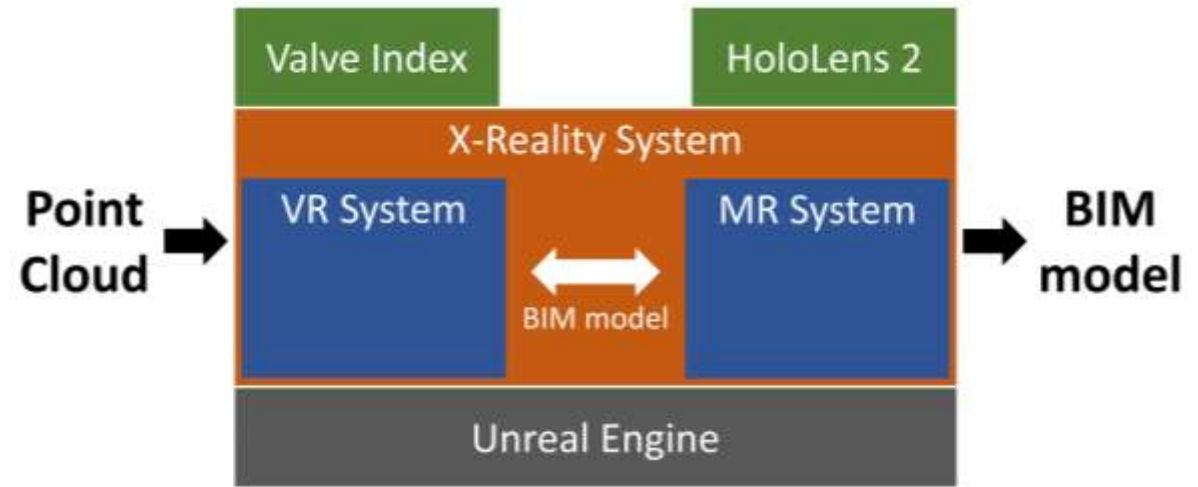
Motivation

- BIM is hardly used for **existing structures**, but has many advantages in **operational phase**
- Required Scan-to-BIM process is still **costly and difficult**
- Idea: **X-Reality (XR)** and **automations** for optimized and intuitive as-built documentation



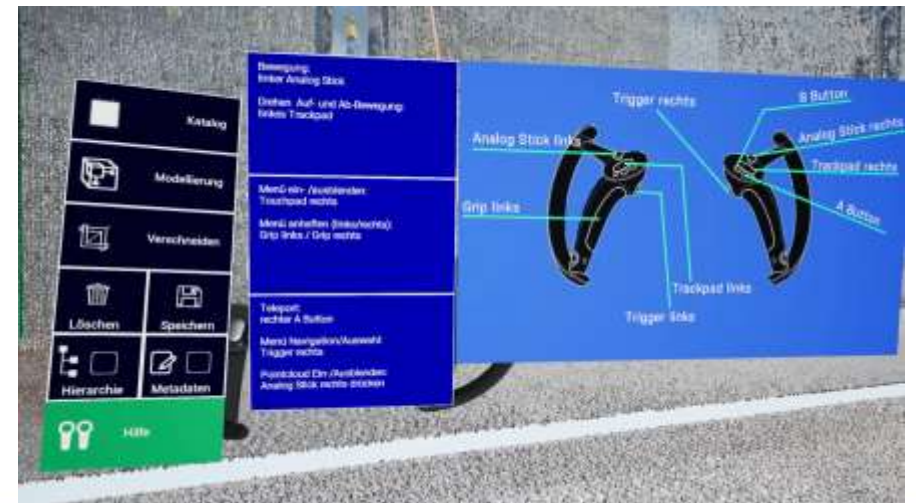
X-Reality BIM System

- Virtual Reality (VR) for location-independent modeling
- Mixed Reality (MR) for on-site as-built documentation and inspection
- BIM model is interchangeable between VR and MR
- Uniform user interface (GUI)



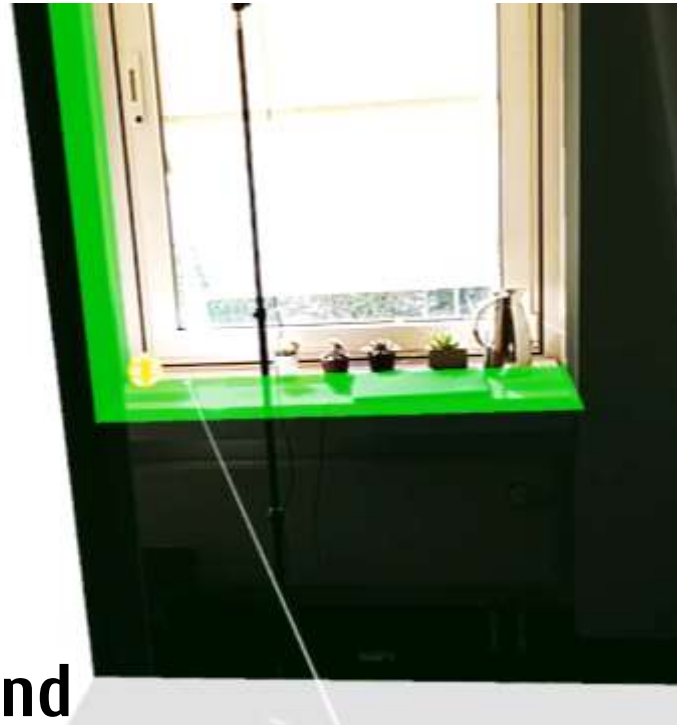
Virtual Reality (VR)

- Off-site modeling from point cloud in immersive 3D environment
- High-performance rendering with octree data structure
- Walking, teleportation and flying enable fast modeling of any size object



Mixed Reality (MR)

- On-site modeling in context of reality means higher detail
- BIM model from VR is visualized georeferenced in reality
- HoloLens 2 headset for more freedom → hands free
- Gesture-based and voice command modeling



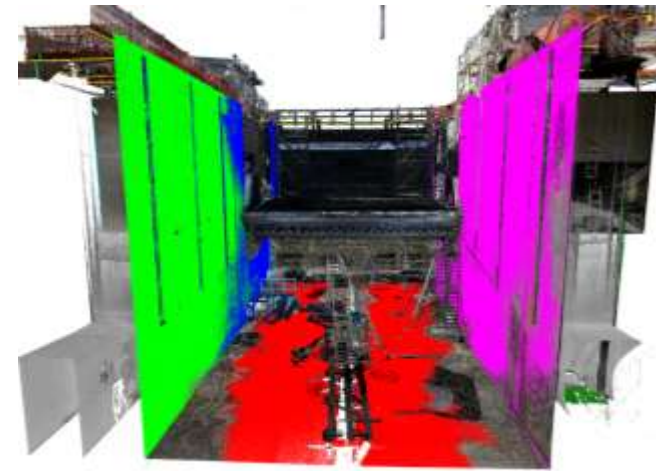
Registration in Reality

- BIM model needs to be placed correctly (registered) in world space
- Solved with corresponding points in BIM model and reality for transformation
- Method integrates seamlessly into HoloLens 2 pose tracking



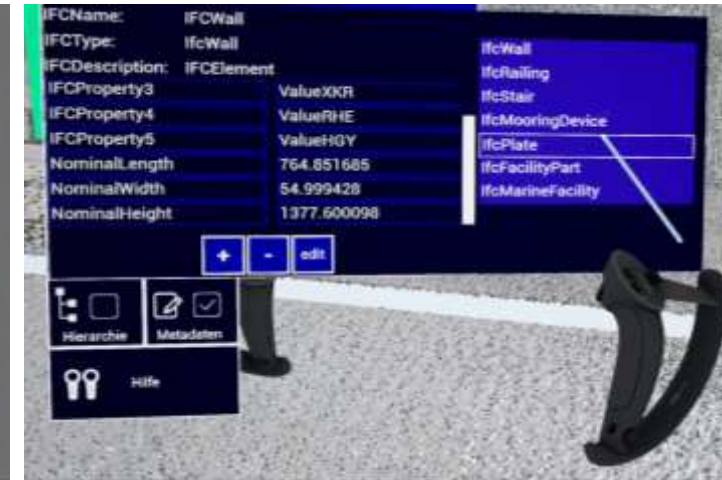
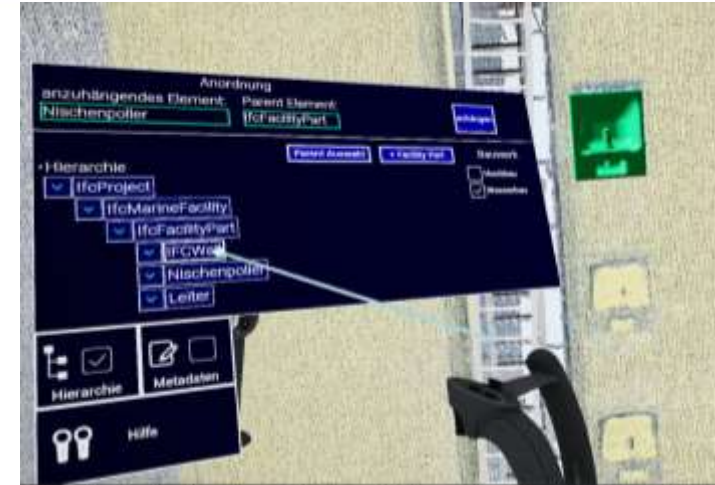
Modeling Geometry

- Three types of modeling
 - Free modeling
 - Parametric modeling
 - Object catalog modeling
- Tools
 - Automatic plane detection
 - Boolean operations
 - Editing (Transformations)



Building Information Modeling

- Based on IFC4.3 → Buildings / Ports and Waterways
 - Object type
 - Object relationships
 - Object attributes
- Fully editable by controller/hand or voice command interaction



Non-proprietary Interface

- IFC4.3-based export interface enables exchanging BIM model to any BIM viewer or BIM authoring software
- All object information is exported, including geometry, relationships and attributes





FIG WORKING WEEK 2023

28 May - 1 June 2023 Orlando Florida USA

Protecting Our World, Conquering New Frontiers

Thank You!

TEMA Technologie
Marketing AG
Aachen, Germany
<https://www.tema.de>

RWTH Aachen University
Geodetic Institute
Chair for Computing in Civil Engineering & GIS
Aachen, Germany
<https://www.gia.rwth-aachen.de>

Organized By



Diamond Sponsors

