



FIG Working Week 2024

19-24 May

Accra, Ghana

Your World, Our World:
Resilient Environment
and Sustainable
Resource Management
for All

Presented at the FIG Working Week 2024
19-24 May 2024 in Accra, Ghana

TS02E: Land Use Planning for Tenure Security in and around Urban, Peri-Urban and Rural Areas

Monday, 20 May 11:45–13:15

Odwira

Chair: Elvena Hayford

Rapporteur: Penehafo Ricardo

Commissions: 8, GLTN, NUST

Presenters:

Pelpuo, I. (12541)

Prigent, X. (12647)

Kohima, J. (12665)

ORGANISED BY



PLATINUM SPONSORS

GEOSA
Geomatics Society of Africa





FIG Working Week 2024

19-24 May

Accra, Ghana

Your World, Our World:
Resilient Environment
and Sustainable
Resource Management
for All

TS03E: Geo-Spatial Intelligence for Smart and Sustainable Settlements

Monday, 20 May 14:30–16:00

Odwira

Chair: Kwabena Obeng Asiama

Rapporteur: Zifceac Iaroslav

Commissions: 3 & 8

Presenters:

Dachaga, W. (12619)

Schaffert, M. (12399)

Agbonika, P. (12575)

Okezie, M. (12559)

Tabase, F. (12419)

Moss, D. (12749)

ORGANISED BY



PLATINUM SPONSORS





FIG Working Week 2024

19-24 May

Accra, Ghana

Your World, Our World:
Resilient Environment
and Sustainable
Resource Management
for All

Impact of Cashew Plantation on Land Tenure in Jaman South

Authors:

PELPUO Isham Chaani, ARKO-ADJEL Anthony and OBENG Kwame



ORGANISED BY



PLATINUM SPONSORS





FIG Working Week 2024

19-24 May

Accra, Ghana

Your World, Our World:
Resilient Environment
and Sustainable
Resource Management
for All

BACKGROUND ^{1/2}

Important commodity worldwide and influence on land use.

Mindful of its value, cashew is considered as a tool responsible for restoring hope to millions of people in Africa. A source of income for many peasant farmers and a boost to national income (Keller, 2010; Sanyang and Kuyateh, 2018)

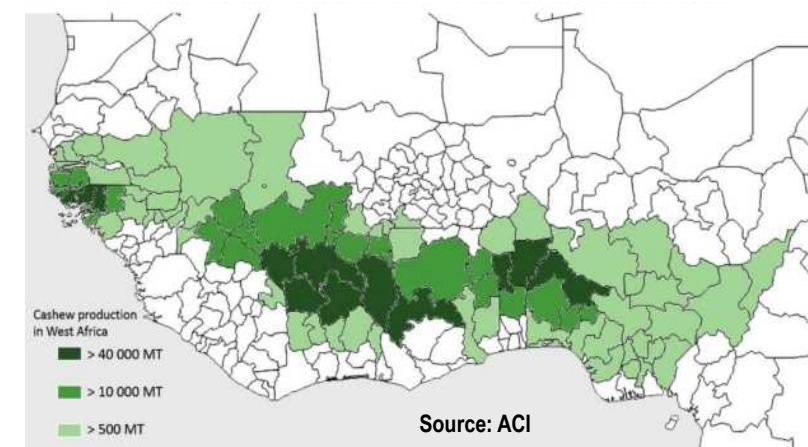




FIG Working Week 2024

19-24 May

Accra, Ghana

Your World, Our World:
Resilient Environment
and Sustainable
Resource Management
for All

BACKGROUND ^{2/2}

- Land tenure is an institution that governs people's interaction with the land, whether officially or informally established (FAO, 2002).
- Land tenure security is the perception by an individual that they have rights to a specific parcel of land for a period of time (Place *et al.*, 1994).
- Societal systems in traditional places have evolved in response to social contexts. The increased economic importance of land, combined with population growth, has resulted in a series of changes and raised security concerns (Arko-Adjei *et al.*, 2009).

ORGANISED BY



PLATINUM SPONSORS





FIG Working Week 2024

19-24 May

Accra, Ghana

Your World, Our World:
Resilient Environment
and Sustainable
Resource Management
for All

PROBLEM STATEMENT

In recent years, agricultural land usage in the Brong-Ahafo area of Ghana has shifted away from the cultivation of food crops and toward expanded cashew farming (Evans, Mariwah and Barima- Antwi, 2015).

The demand for land for cashew plantations has resulted in many, including settlers and migrants instituting various arrangements for accessing land.

Bidding and shoving is recurring in the land space without recourse to purpose and needs of indigenes.

The main challenge here is the increasing use of land for cashew plantations and how it has affected the way land is acquired, used, and the security of tenure.

ORGANISED BY



PLATINUM SPONSORS





FIG Working Week 2024

19-24 May

Accra, Ghana

Your World, Our World:
Resilient Environment
and Sustainable
Resource Management
for All

STUDY AREA

Between Lats: 7° 35' N
and 7° 58' N
Long: 2° 47' W and 2°
78' W

Bono Region
of Ghana

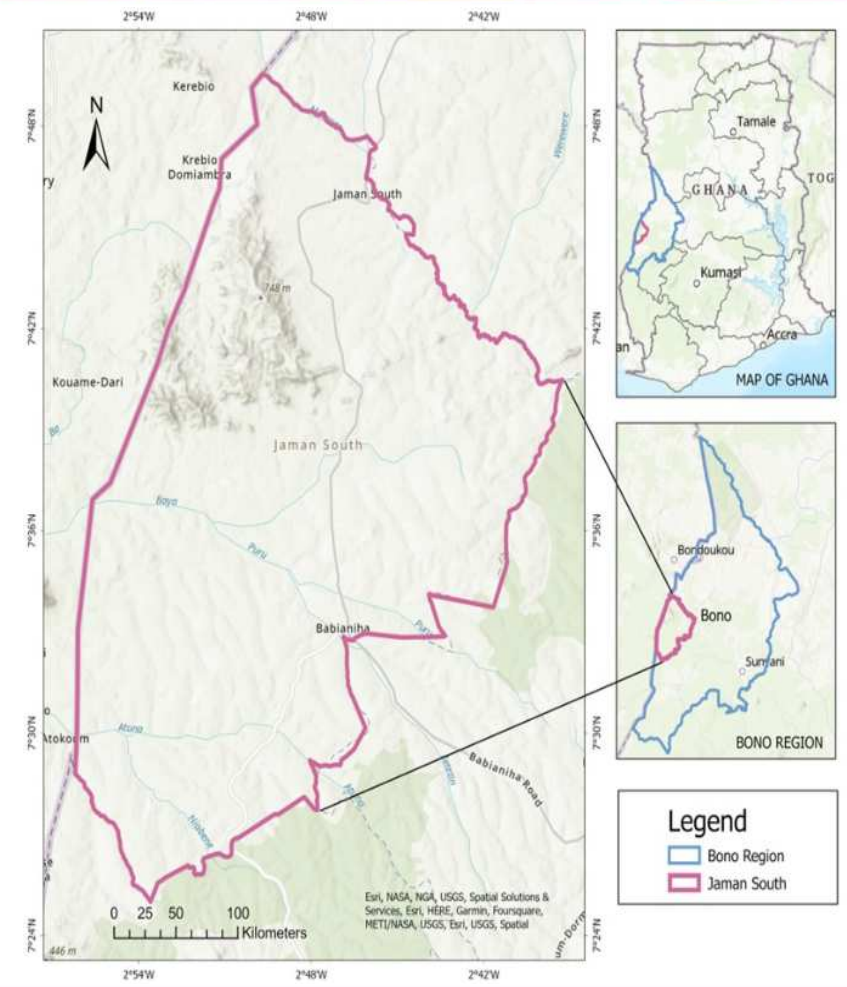




FIG Working Week 2024

19-24 May

Accra, Ghana

Your World, Our World:
Resilient Environment
and Sustainable
Resource Management
for All

RESEARCH GAP

•Peprah et al., (2013) carried out cashew-related research in Jaman South. Investigation on the rise and fall nature of poverty among rural cashew farmers attributed to Land tenure problems.

Several researches have been conducted investigate the implications of changing agricultural land use from food production towards cashew cultivation for food security and poverty alleviation.

Cisse et al., (2021) assessed the impact of increased cashew plantations on the natural landscape in the North of Cote D'Ivoire.

Any research to examine the impact of increased cashew farming on land tenure?

This research aims to assess the impact cashew has had on the land tenure.

ORGANISED BY



PLATINUM SPONSORS





FIG Working Week 2024

19-24 May

Accra, Ghana

Your World, Our World:
Resilient Environment
and Sustainable
Resource Management
for All

RESEARCH AIM, OBJECTIVES AND QUESTIONS

Assessing the impact of increased cashew farming on the land tenure in the Jaman South Municipality.

Specific Objective	Research Questions
1. To produce Land Use Land Cover Change (LULCC) assessment	<ul style="list-style-type: none"> What has been the trend in land use change from 1989?
2. To analyze the land tenure evolution within Jaman South Municipality	<ul style="list-style-type: none"> What was the existing tenure arrangements practiced before the cashew boom? What are the tenure security concerns and challenges associated with cashew?
3. To assess the impact of cashew on the land tenure system in the Municipality	<ul style="list-style-type: none"> How has the rapid and extensive expansion of cashew plantations impacted the land tenure?



FIG Working Week 2024

19-24 May

Accra, Ghana

Your World, Our World:
Resilient Environment
and Sustainable
Resource Management
for All

METHODOLOGY

- Materials**
- Handheld GPS
 - Satellite Images
 - Remote Sensing/ GIS Software
 - Google Earth Pro
 - SPSS

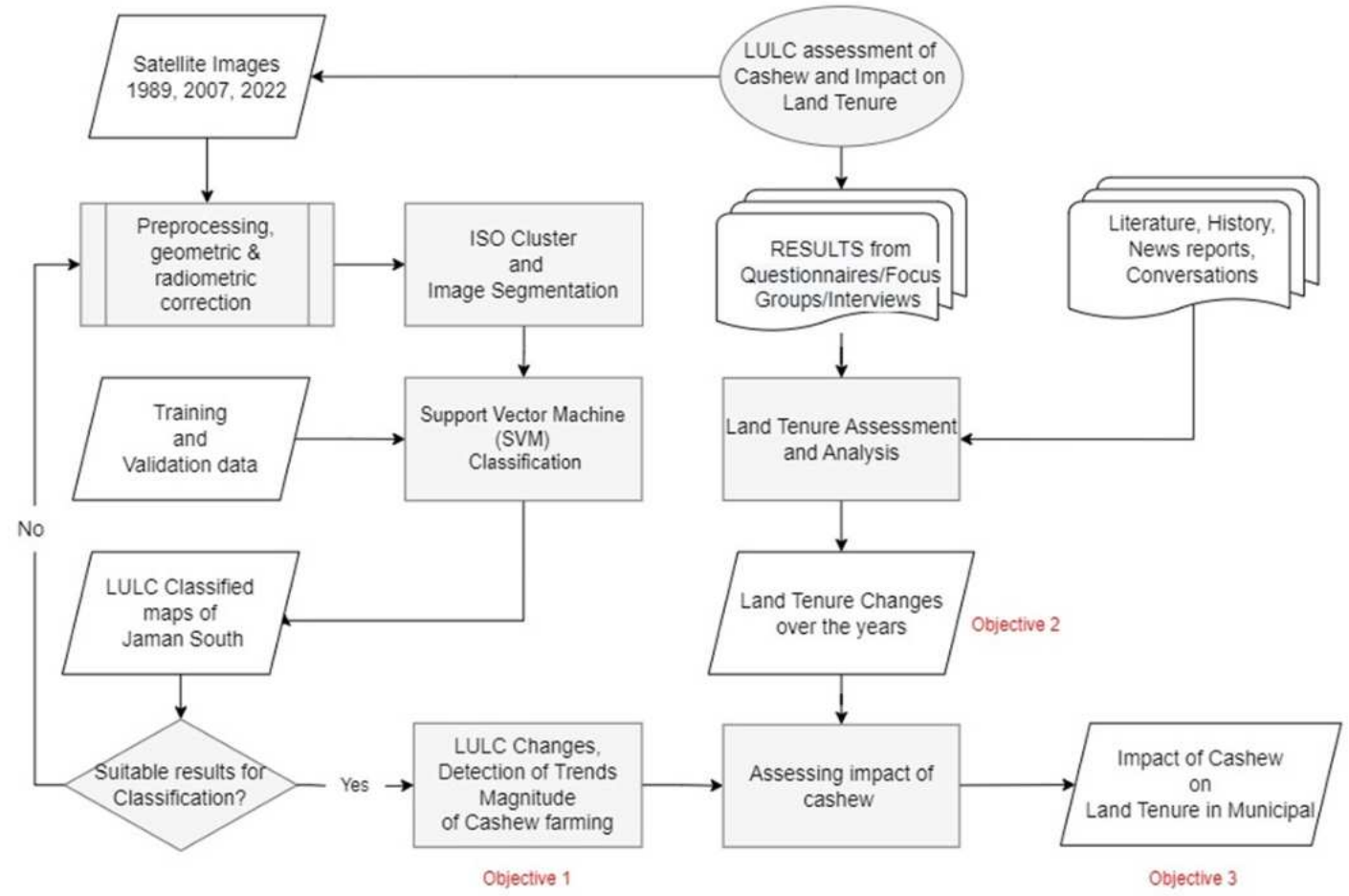


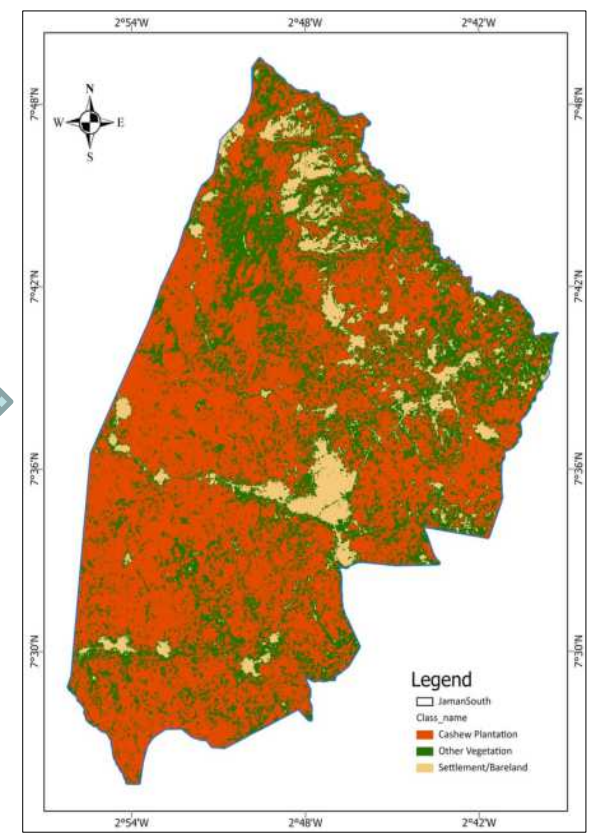
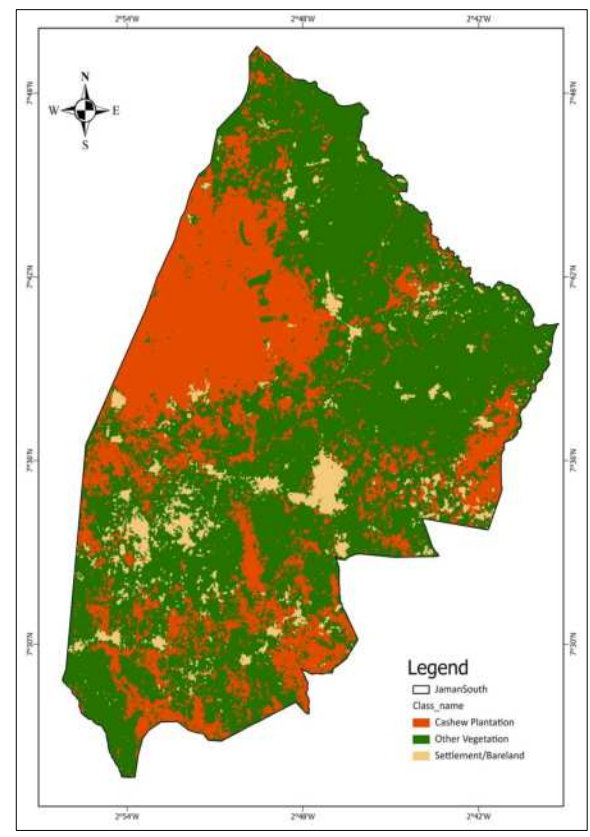
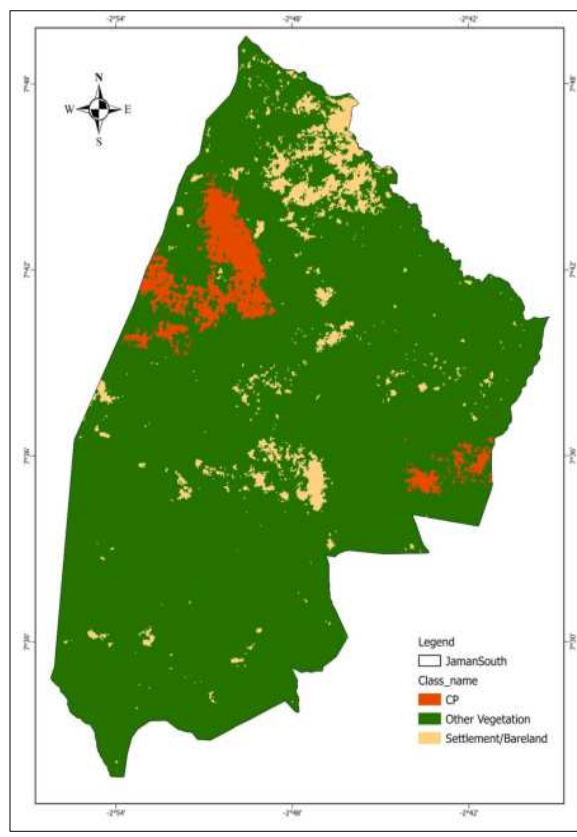


FIG Working Week 2024

19-24 May

Your World, Our World:
Resilient Environment
and Sustainable
Resource Management
for All

RESULTS and DISCUSSION 1/3



ORGANISED BY



PLATINUM SPONSORS





FIG Working Week 2024

19-24 May

Accra, Ghana

Your World, Our World:
Resilient Environment
and Sustainable
Resource Management
for All

RESULTS and DISCUSSION 2/3

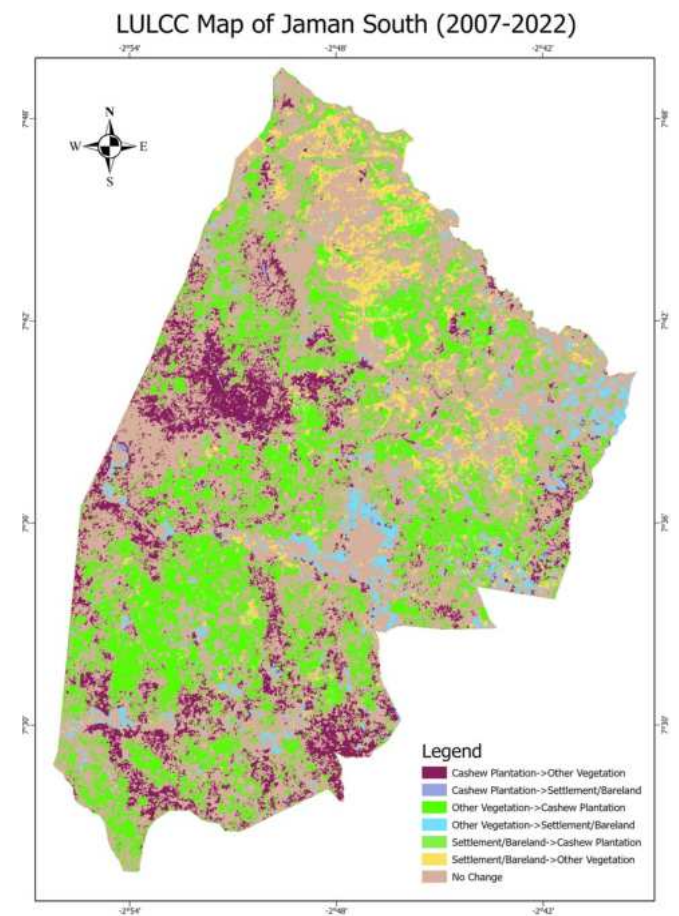
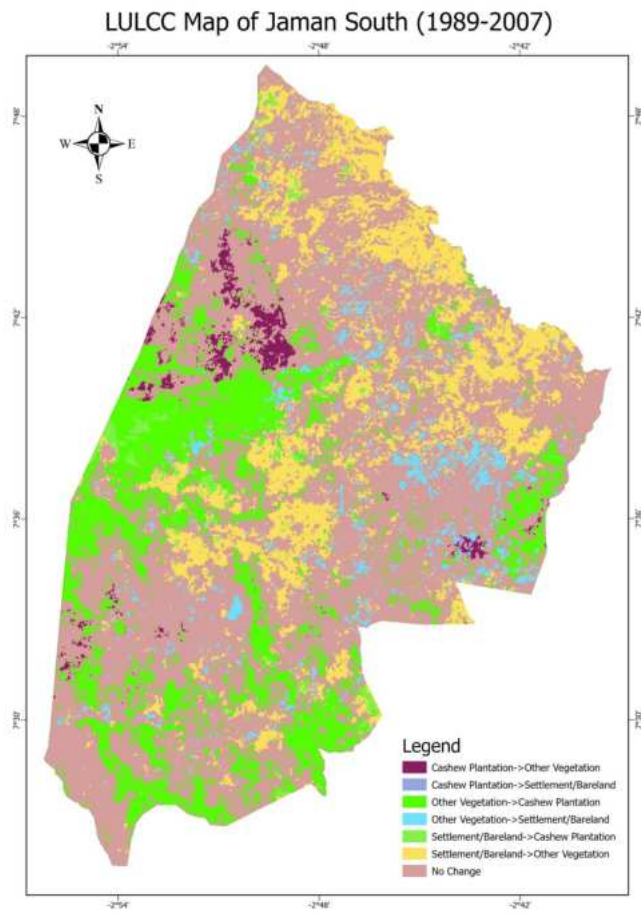
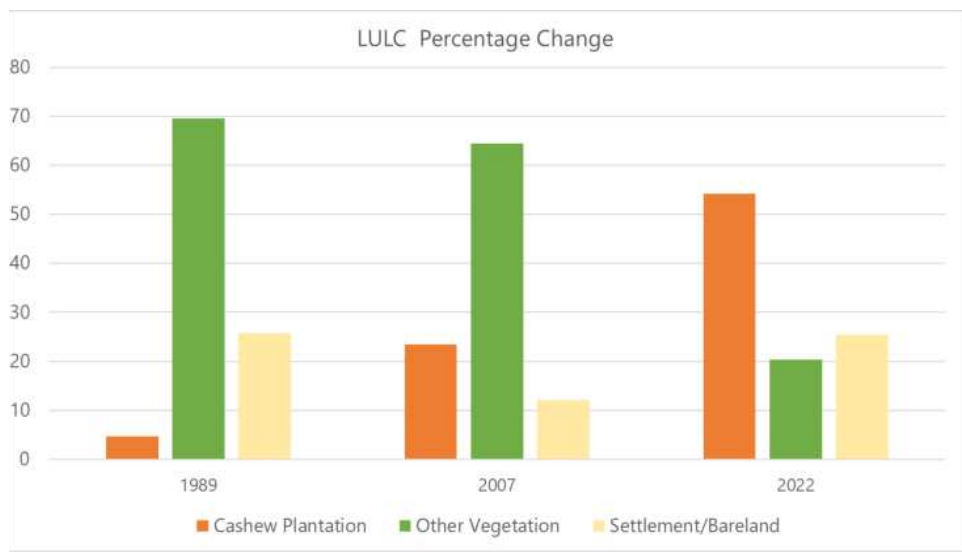




FIG Working Week 2024

19-24 May

Accra, Ghana

Your World, Our World:
Resilient Environment
and Sustainable
Resource Management
for All

RESULTS ^{3/3}

The land tenure system was predominantly customary until the recent commercialization of land due to the effect of increased demand for land.

Evidence from this research shows that most land owners have been engaged in some form of sharecropping arrangements with migrants/settlers.

The study has established that the dominant relationship or arrangement which existed between land owners and settlers/migrants was 'Abusa'.

Some land owners have carried out the cashew farming on their own. These are mostly indigenes who have acquired the land through usufructuary rights. Cashew is now the major drive for land acquisition



FIG Working Week 2024

19-24 May

Accra, Ghana

Your World, Our World:
Resilient Environment
and Sustainable
Resource Management
for All

CONCLUSION

The study showed that cashew plantation is the dominant land cover in the area. The LULC maps showed that cashew had become the dominant crop in the area. Acknowledging that other vegetation (such as other crops and hunting grounds) is still present, they have not yet been entirely supplanted by the cashew

The study established that growing cashew land demand has altered Jaman South's customary land tenure patterns in terms of how that land is accessed, maintained and used. Most landowners engaged in subsistence farming and a few others, cocoa farming before the inception of cashew.

Aspects of land tenure that are affected by rise in cashew production includes the availability of land for possible extension or new planting, the mode of acquisition of land, security of tenure and conflicts resolution mechanisms. Overall, the impact of increased cashew plantation on land tenure are seen from the study.

ORGANISED BY



PLATINUM SPONSORS





FIG Working Week 2024

19-24 May

Accra, Ghana

Your World, Our World:
Resilient Environment
and Sustainable
Resource Management
for All

ACKNOWLEDGEMENT

Funded by the Deutsche Gesellschaft für Internationale Zusammenarbeit (GIZ) GmbH



ORGANISED BY



PLATINUM SPONSORS





FIG Working Week 2024

19-24 May

Accra, Ghana

Your World, Our World:
Resilient Environment
and Sustainable
Resource Management
for All

SUSTAINABLE DEVELOPMENT **GOALS**

International Federation of Surveyors supports the Sustainable Development Goals

Commission

Commission's name

Serving Society for the Benefit of People and Planet



ORGANISED BY



PLATINUM SPONSORS

