



Collaboration, Innovation and Resilience: Championing a Digital Generation

Brisbane, Australia 6-10 April

CORRECTING CADASTRAL MAPS ERRORS IN ARMENIA

USING GEOSPATIAL TECHNOLOGY

Presented by: Suren Tovmasyan
Head of the Cadastre Committee of
Republic of Armenia



PLATINUM SPONSORS





**WORKING
WEEK 2025**

AND

Locate25 | **G**
THE NATIONAL GEOSPATIAL CONFERENCE

Collaboration, Innovation and Resilience:
Championing a Digital Generation



Brisbane, Australia 6–10 April

OUTLINE



Introduction



Methods



Results



ORGANISED BY



PLATINUM SPONSORS





**WORKING
WEEK 2025**

AND

Locate25 | 
THE NATIONAL GEOSPATIAL CONFERENCE

Collaboration, Innovation and Resilience:
Championing a Digital Generation



Geospatial
Council of Australia

Brisbane, Australia 6–10 April

Introduction



Challenges in Armenia's Cadastral System

- Historical reliance on outdated surveying methods.
- Issues related to human error, manual surveys, and inaccuracies in measurements.
- Need for modern geospatial technologies to improve accuracy and efficiency.



Legislative Reform (2021)

- New legal framework
Armenia implemented legislative reforms that allowed to integrate high-resolution orthophotos with up to 30 cm resolution.

ORGANISED BY



PLATINUM SPONSORS



CHCNAV





**WORKING
WEEK 2025**

AND

Locate25 | **G**
THE NATIONAL GEOSPATIAL CONFERENCE

Collaboration, Innovation and Resilience:
Championing a Digital Generation



Geospatial
Council of Australia

Brisbane, Australia 6–10 April



Goal

To present a scientifically rigorous approach to cadastral map error correction that incorporates both technological advancements and legal frameworks to achieve enhanced land administration accuracy.



**To evaluate the
accuracy of cadastral
maps in Armenia**



**To demonstrate the
effectiveness of geospatial
technologies in error
correction**



**To provide a framework
for cadastral data
enhancement in Armenia**



ORGANISED BY



PLATINUM SPONSORS





**WORKING
WEEK 2025**

AND

Locate25 | **G**
THE NATIONAL GEOSPATIAL CONFERENCE

Collaboration, Innovation and Resilience:
Championing a Digital Generation



Geospatial
Council of Australia

Brisbane, Australia 6–10 April

METHODOLOGY

TOOLS

QGIS, vector data, WGS-84 coordinate system.

COLLABORATION

Involvement of local authorities and community leaders.

LEVELS OF CORRECTION

01



**Correction of
Administrative
Boundaries**

02



**Correction of
District
Boundaries**

03



**Correction of
Parcel Errors**



ORGANISED BY



PLATINUM SPONSORS



CHCNAV





**WORKING
WEEK 2025**

AND

Locate25 
THE NATIONAL GEOSPATIAL CONFERENCE

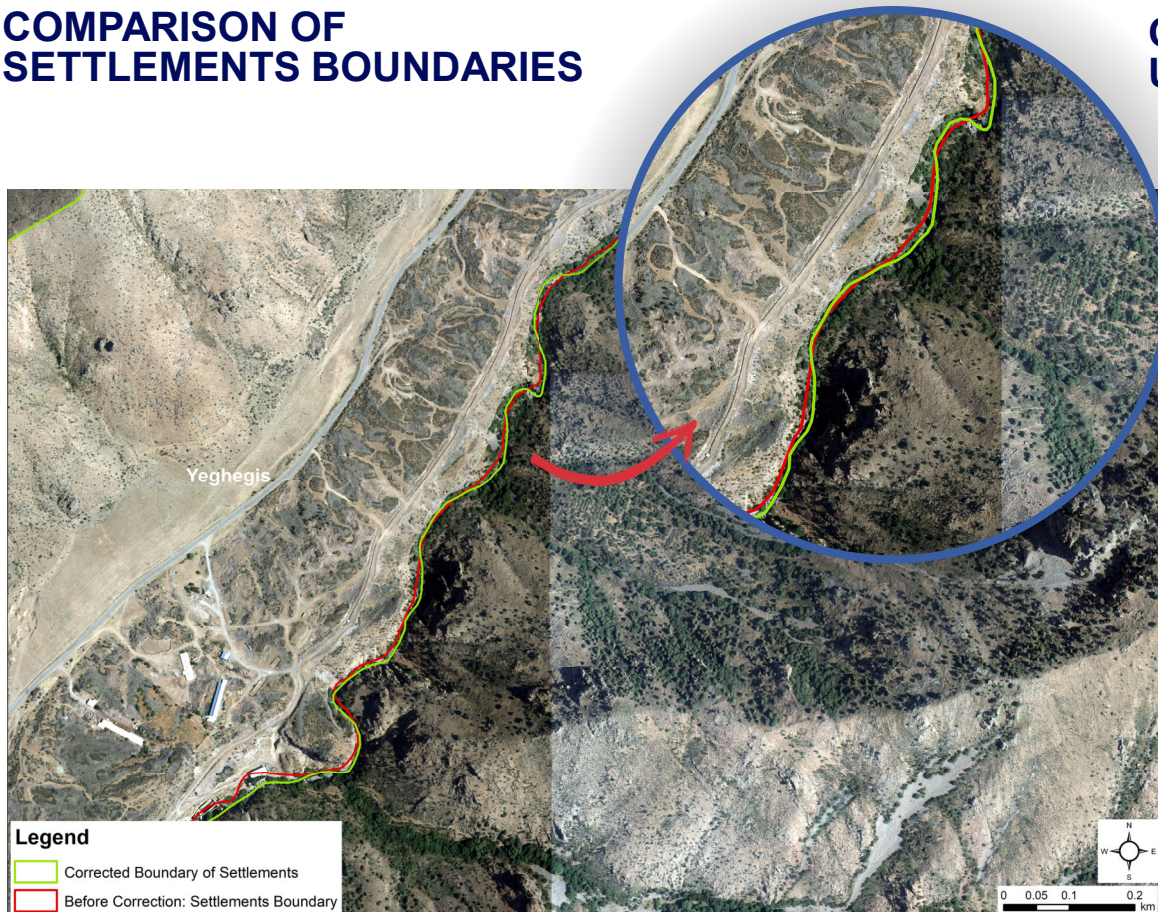
Collaboration, Innovation and Resilience:
Championing a Digital Generation



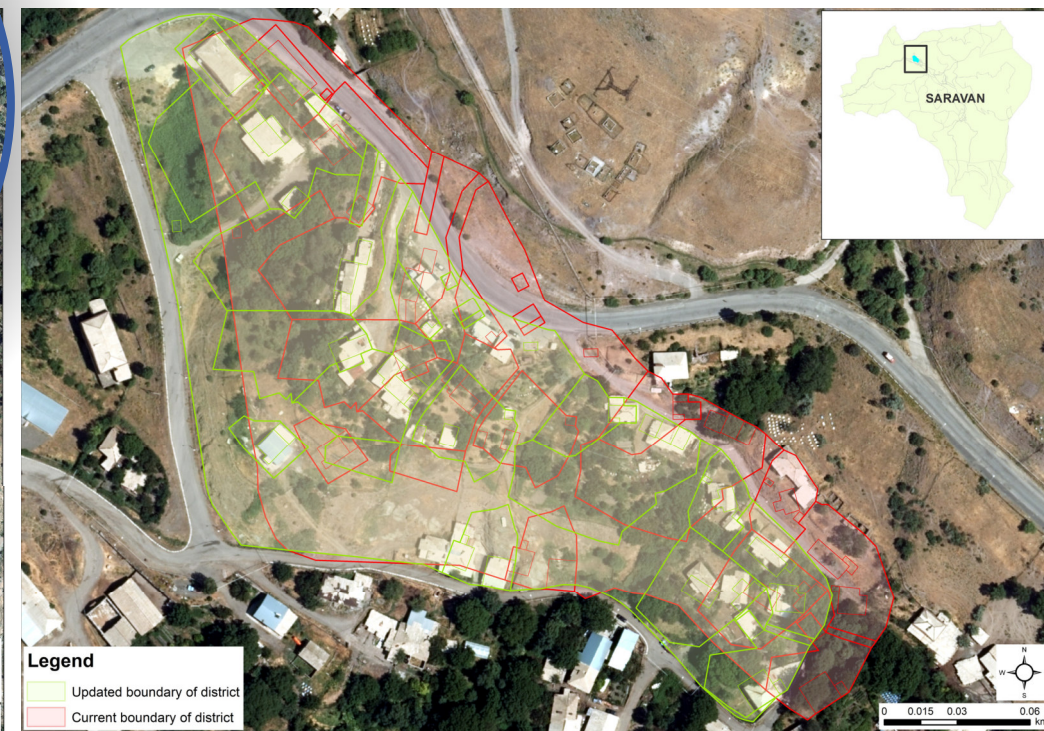
Geospatial
Council of Australia

Brisbane, Australia 6–10 April

COMPARISON OF SETTLEMENTS BOUNDARIES



CORRECTED CADASTRAL DISTRICT BOUNDARIES: UPDATED AND CURRENT BOUNDARIES



ORGANISED BY   **Geospatial**
Council of Australia

PLATINUM SPONSORS
 Australian Government

CHCNAV

 **esri**
THE SCIENCE OF WHERE™

 **Leica**
Geosystems

 **HD Meter**

 **Surveyors**
Australia



**WORKING
WEEK 2025**

AND

Locate25 | 
THE NATIONAL GEOSPATIAL CONFERENCE

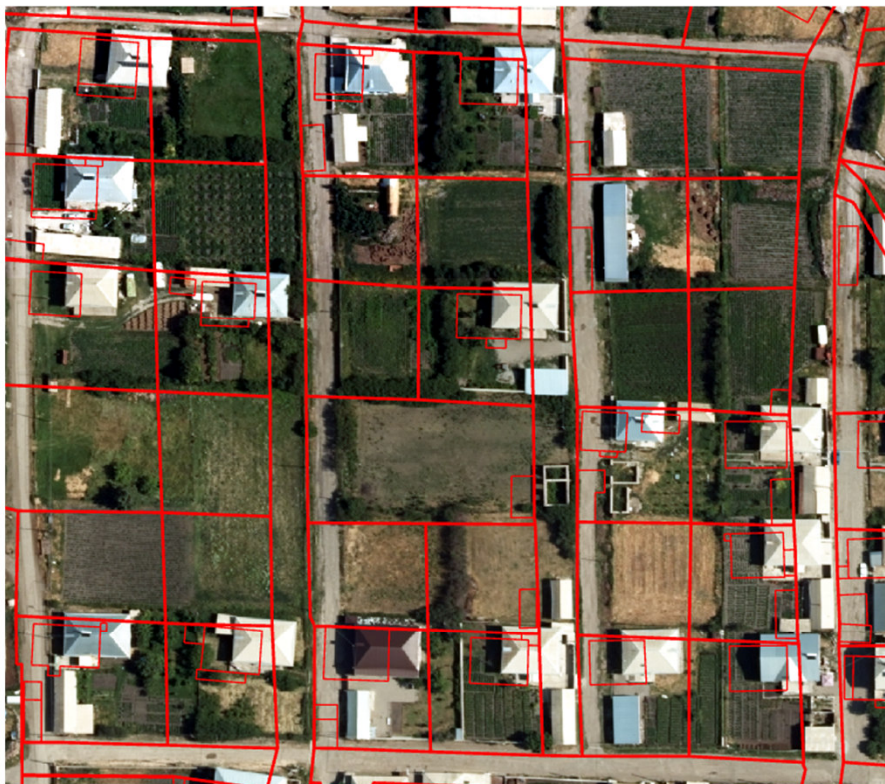
Collaboration, Innovation and Resilience:
Championing a Digital Generation



Geospatial
Council of Australia

Brisbane, Australia 6–10 April

COMPARISON OF CADASTRAL MAP BOUNDARIES



before correction



after correction



ORGANISED BY



Geospatial
Council of Australia

PLATINUM SPONSORS

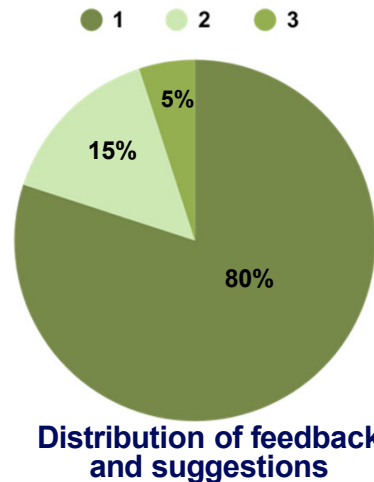
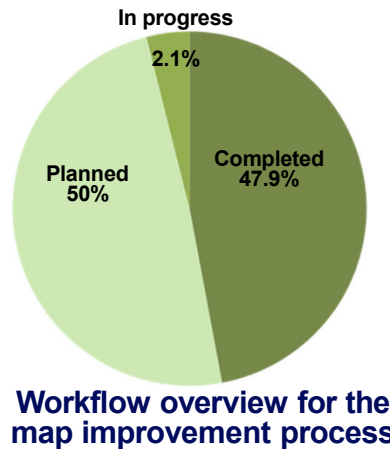


CHCNAV



RESULTS

Progress



Feedback

- 35 revised community projects submitted, focusing on legally defined administrative boundaries.
- Some verbal suggestions were not incorporated (e.g., property boundary disputes).

1. Complaints/suggestions related to property boundaries, which are not considered within the scope of this work.
2. Changes to the boundaries of two neighboring settlements, particularly those adjusted by the Cadastre Committee in accordance with the description of community boundaries defined by the Law on Administrative Territorial Division of Armenia.
3. Other.



RESULTS

Accuracy Analysis



Geometric Deviation

Mountainous settlements

- Point Deviation: 0.5m – 3m
- Land Plot Deviation: 0.5m – 3m
- Administrative Unit Deviation: 0.5m – 10m

Flatland settlements

- Point Deviation: Up to 210m
- Land Plot Deviation: Up to 210m
- Administrative Unit Deviation: 0.5m – 100m



Topological Errors

Urban (Kapan City)

- Overlay: 150
- Gaps: 152
- Buildings outside parcels: 2

Rural (Saravan Village)

- Overlay: 7
- Gaps: 17
- Buildings Outside Parcels: 0



Semantic Errors

Urban (Kapan City)

- Duplicate Cadastral Codes: 4
- Building Code Mismatch: 18



Duplicate cadastral codes for land parcels and buildings.



Cadastral codes for land parcels or buildings that do not correspond with registered property rights.



Discrepancies between building codes and corresponding land parcel codes.



**WORKING
WEEK 2025**

AND

Locate25 | **G**
THE NATIONAL GEOSPATIAL CONFERENCE

Collaboration, Innovation and Resilience:
Championing a Digital Generation



Geospatial
Council of Australia

Brisbane, Australia 6–10 April

9 INDUSTRY, INNOVATION
AND INFRASTRUCTURE



1st relevant
SDG

11 SUSTAINABLE CITIES
AND COMMUNITIES



2nd relevant
SDG

16 PEACE, JUSTICE
AND STRONG
INSTITUTIONS



3rd relevant
SDG

**SUSTAINABLE
DEVELOPMENT GOALS**

International Federation of Surveyors supports the
Sustainable Development Goals

ORGANISED BY



Geospatial
Council of Australia

PLATINUM SPONSORS



Australian Government

CHCNAV



THE SCIENCE OF WHERE™

Leica
Geosystems



iMETER



Surveyors
Australia



**WORKING
WEEK 2025**



Locate25 
THE NATIONAL GEOSPATIAL CONFERENCE




Collaboration, Innovation and Resilience: Championing a Digital Generation

Brisbane, Australia 6–10 April

THANK YOU FOR YOUR ATTENTION

Suren Tovmasyan
Head of the Cadastre Committee of Republic of Armenia

 suren.tovmasyan@gov.am



PLATINUM SPONSORS

