

- Towards new concepts for handling geoinformation

Centre for 3D Geoinformation
Aalborg University
Denmark



www.3dgi.dk



Outline

- 1. Introduction
- 2. Digital Northern Jutland – in DK
- 3. Centre for 3D geoinformation
- 4. Drivers on the GI – "FIG" community

*Presented by
Prof. Esben Munk Sørensen*



www.3dgi.dk



Starting Point:

- Possible to work with 3D in geographical information systems.
- Representation of objects in three dimensions in all processes.
- Challenges the surveying community, which since the development of the trigonometric surveying largely has been working with two-dimensional systems - for many years analogously and during the last few decades digitally.
- International standardization of data and communication triggered by the Internet and related technologies challenges the national communication procedures.
- The challenge is that the profession has to replace large parts of the scientific and theoretical foundation of its professional efforts. The toolbox is going to change its data handling, which places heavy demands on the educational institutions, on research and on practice.
- This requires close co-operation between universities, profession and research.



The **metric** system serves today as the common language of high-tech communications, cutting-edge science, machineproduction and international commerce.

....."The Measure of all things".
About the metricsystem that transformed
the world 200 years ago.
Ken Alder 2002

www.3dgi.dk



GSDI and related standards will serve tomorrow as a common language of high-tech communications, cutting-edge science, and international commerce and create the **digital earth**



www.3d



2. The Digital Northern Jutland

- A county in Denmark – 0,5 mio inhab.
- A wide-range governmental program to raise a digital region using information technology on all levels.
- Partnership between private sector, local and regional authorities and Government
- Running from 2000 to 2005



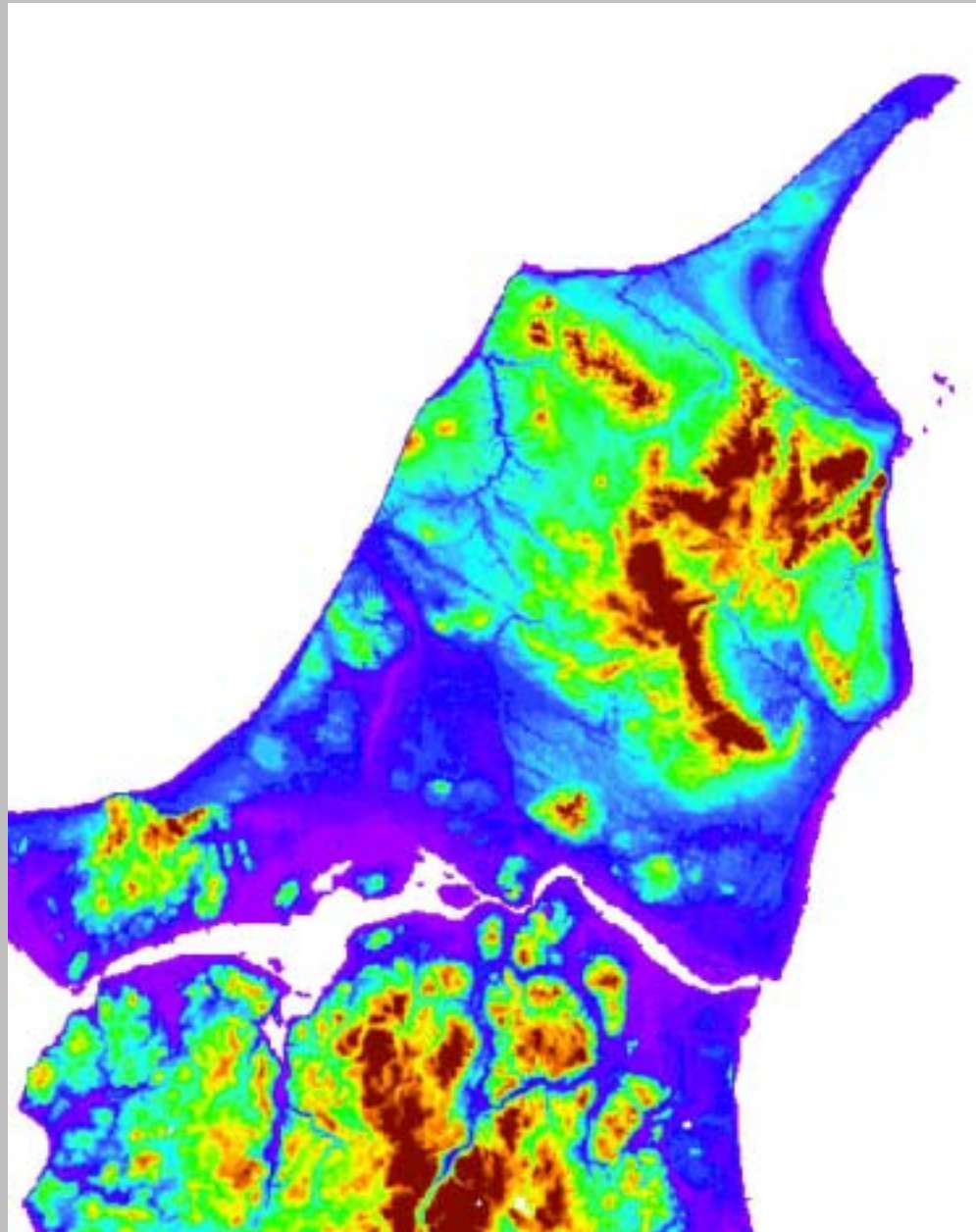
Arial Photos
1960

Satellites
1970



www.3dgi.dk

Digital Elevation Models
1980



www.3dgi.dk





www.3dgi.dk





www.3dgi.dk



The University Campus in Aalborg



FPS: 15,20 frame: 0,0658s tessellation: 0,0000s draw: 0,0000s
Joy0 : 0,000 Joy1: 0,000
World Pos: (-38,06, -613,52, -161,72)



- You´re welcome to visit the Region of Northern Jutland and navigate your selv over a simple 3D visualization covering the entire region
- Take a look at www.3d.nja.dk

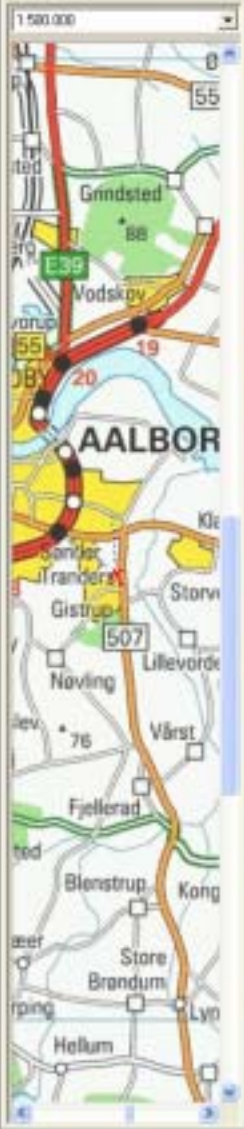


www.3dgi.dk



Adresse: [Overgikart](#)

30 | [Nordbyvej And](#) | [Hjælp](#)



Display Quality: ██████████ 756 kbps

INFORMATION

DIRECTION	233.77	UP
SPEED	0	
ALTITUDE	525.24	N
LOCATION	560705.80	
WIND	40C	Y
	6316394.23	

ON

Address: Overgikert

30 Nordbybrønt Amt | Help



Display Quality: [Progress Bar] 00 kbps [Progress Bar]

FLIGHT PANEL

DIRECTION	SPEED	UP	ALTITUDE	LOCATION
225.74	0	[Buttons]	287.31	X: 056627.85
			WIND AGL	Y: 632218.94

ON

Adress | Översikt

30 | Nordvästra Ant | Hjälp

Kommun:

Aalborg

Vilans:

VESTERBRO

Net:

1

Flyvtil

Flyv



Display Quality ██████████ 00 kbps PPP

DIRECTION SPEED m/s

250.00 0

UP

DOWN

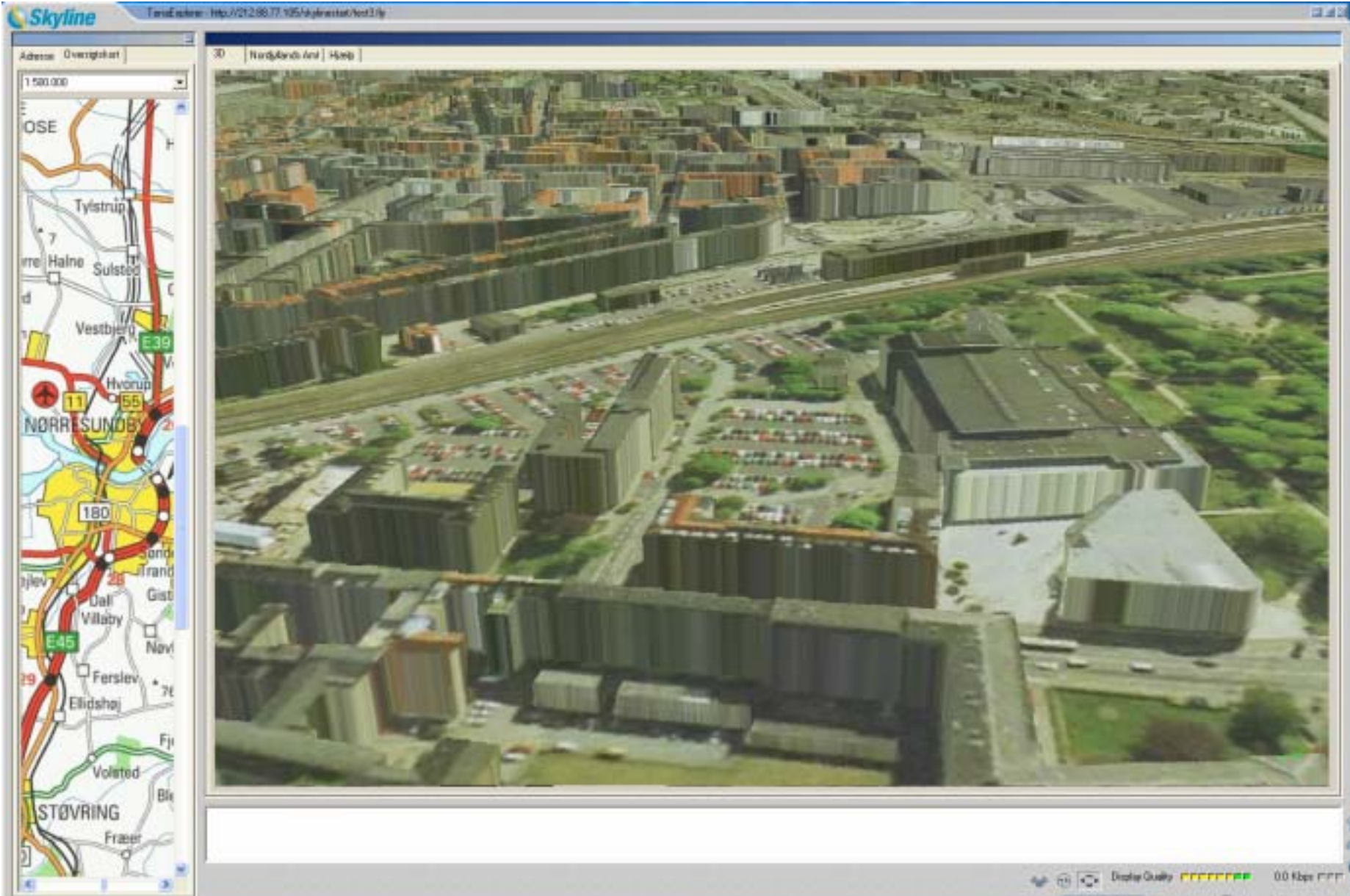
LEFT

RIGHT

OR

ALTITUDE LOCATION meters

282.19	N	555284.37
99999.90E	E	6323330.00



To see the model on Internet: www.3d.nja.dk

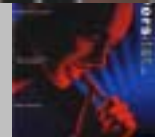
DIRECTION	SPEED	UP	ALTITUDE	LOCATION
28.74	0	UP	133.93	S: 555204.95
		DOWN		N: 632209.48

Planning and Decision Making in VR-MediaLab Aalborg



Local Planning for Suburbs

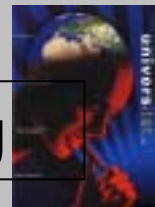
www.3dgi.dk



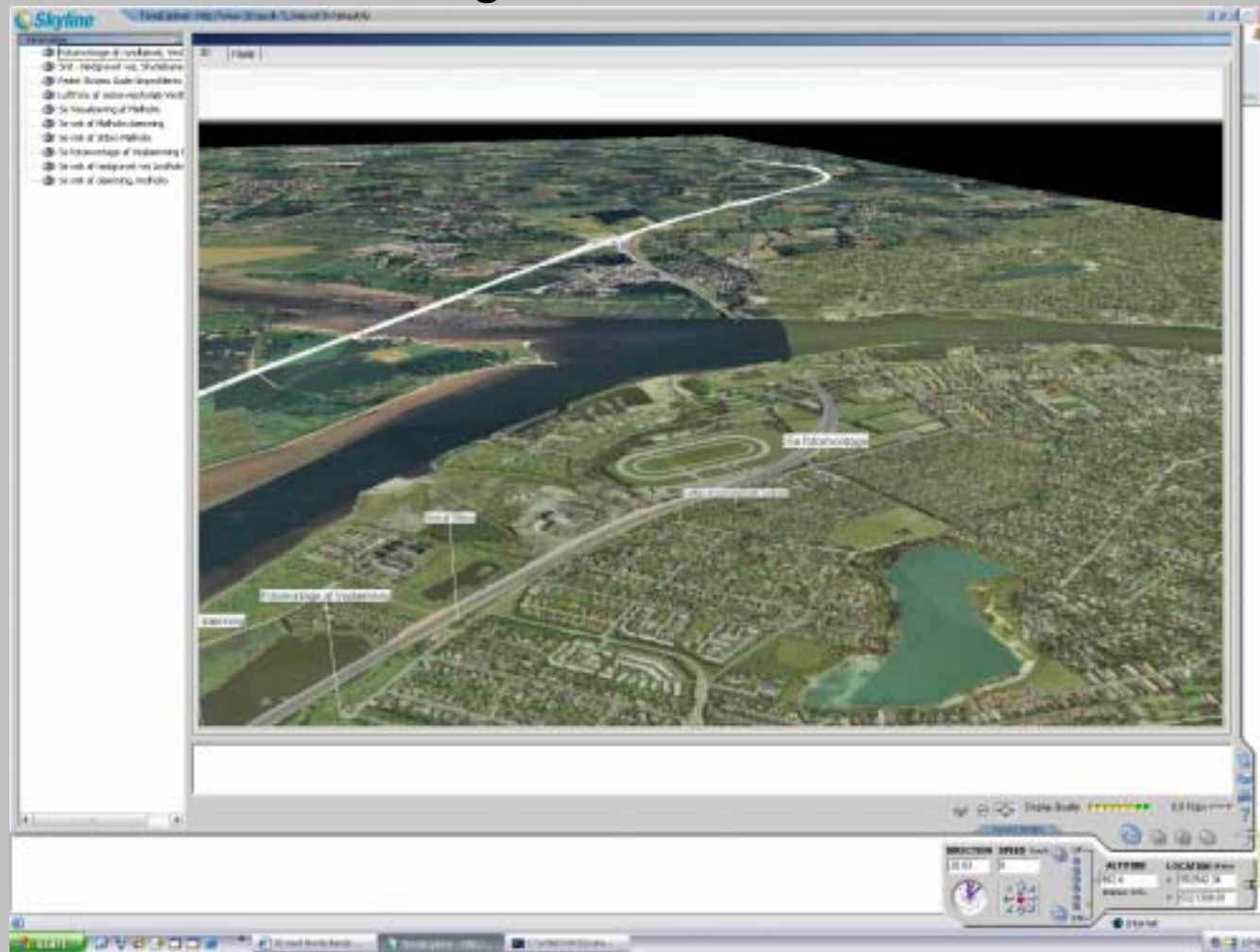
Planning and Desicion Making in VR-MediaLab Aalborg



MusicHouse on The Harbour Front of Aalborg
www.3dgi.dk



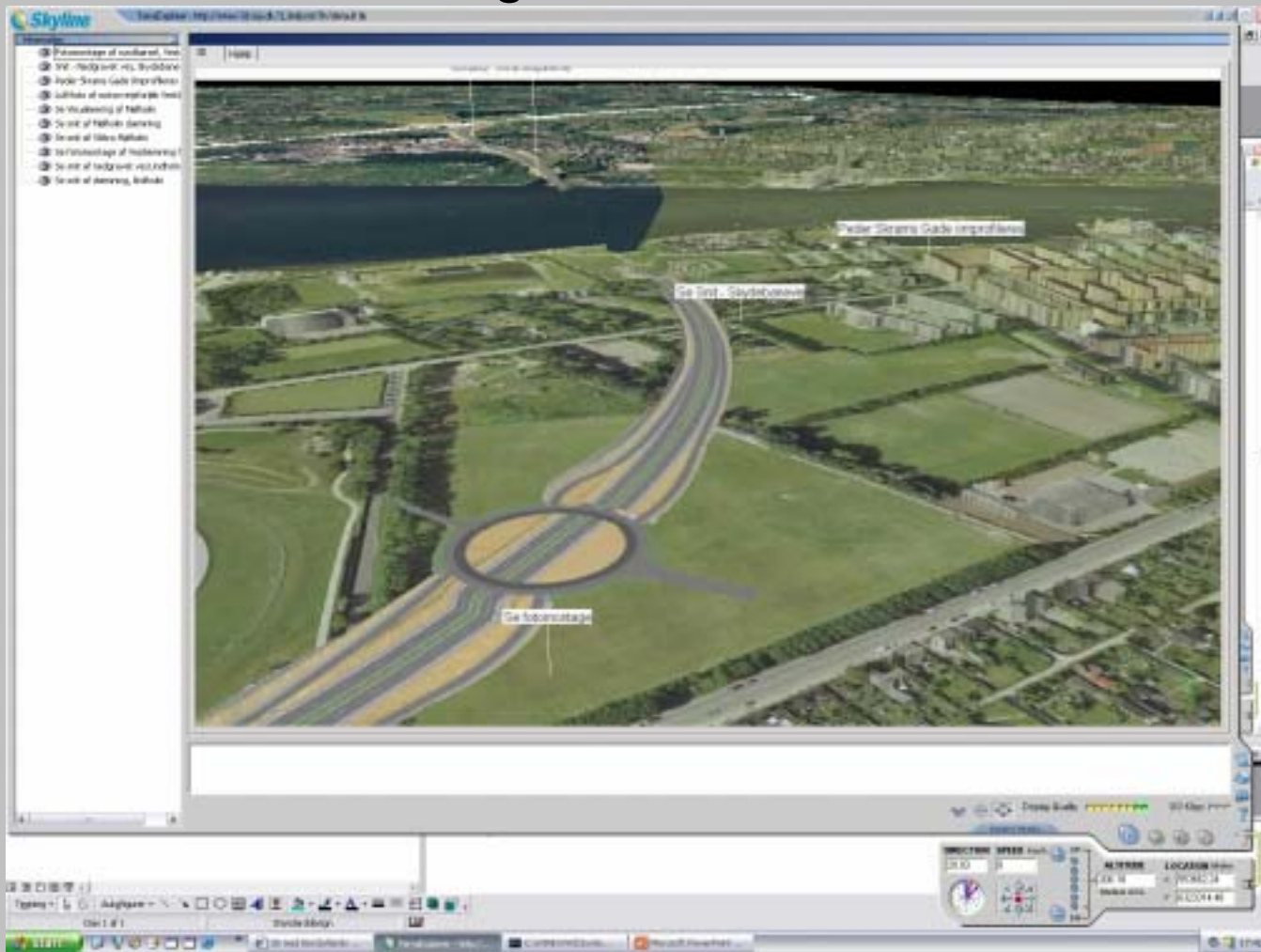
Planning and Decision Making Using the WEB



New high-way passing green areas
www.3dgi.dk



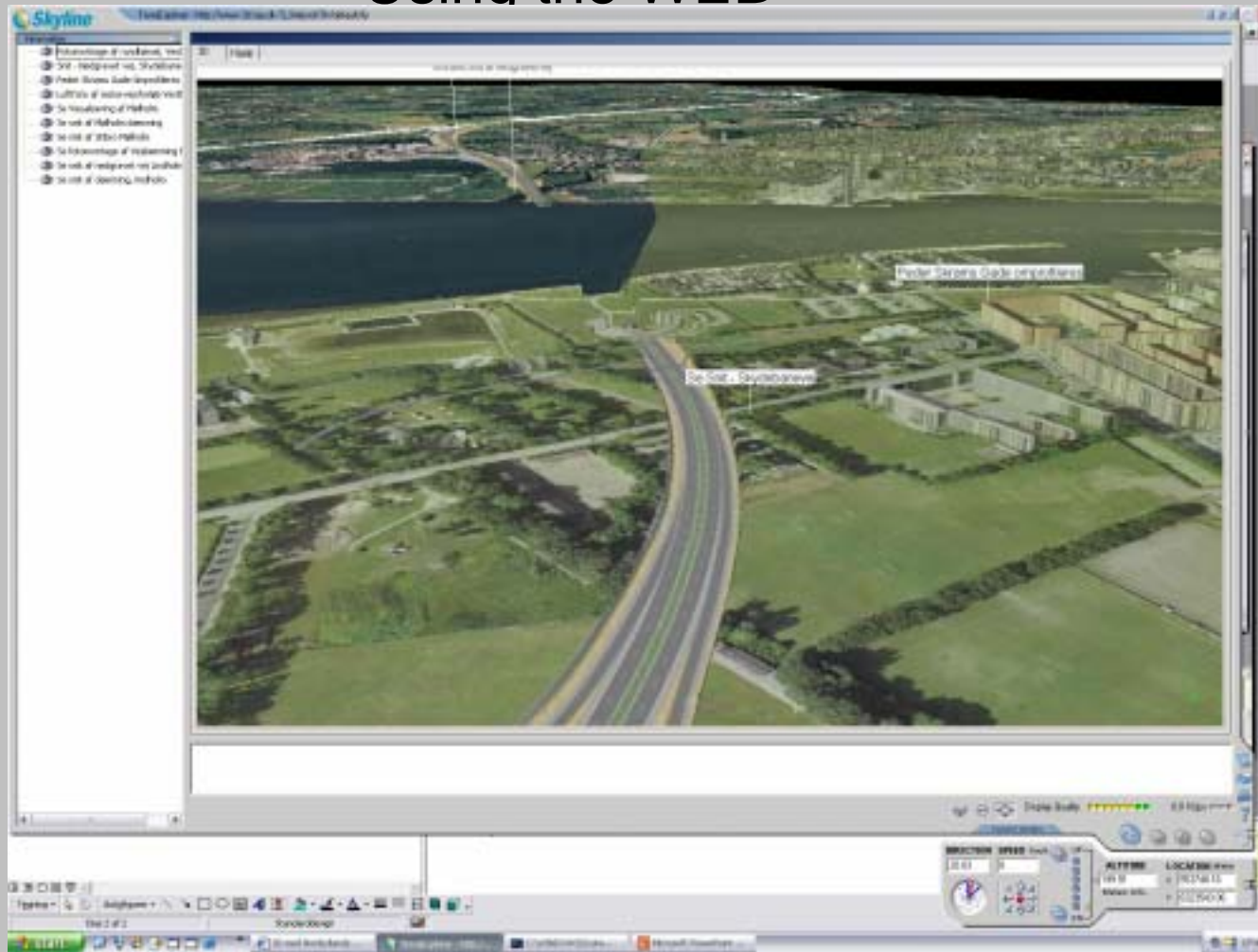
Planning and Decision Making Using the WEB



New high-way passing green areas
www.3dgi.dk



Planning and Decision Making Using the WEB



New high-way passing green areas
www.3dgi.dk



Vejviser - Kommuneplanrammer - Microsoft Internet Explorer

Filer Rediger Vis Foretrukne Funktioner Hjælp

Adresse <http://www.aalborg.dk/vejviser/fysisk+planlaegning/kommune.htm>

www.detaktiveaalborgkort.dk
VEJVISER

Selvbetjening | Adresser og åbningstider | Kontakt | Forvaltning | Sitemap

Føj til foretrukne Udskriftslayout

Det aktive Aalborgkort

Vejviserens forsider

- ▶ Hvor findes?
 - ▼ Kommuneplanen
 - Kommuneplanrammer
 - Planredegørelse
 - ▶ Kort
 - ▶ Luftfotos
- Hjælp
- Kommentarer
- Nyheder

Kommuneplanrammer med link til bestemmelser

Temaer

Søg i Aalborg

- Vejnavn
- Kommuneplanområde
- Bly- og bydelsafgrænsning
- Kommuneplanrammer

Kommuneplanrammer

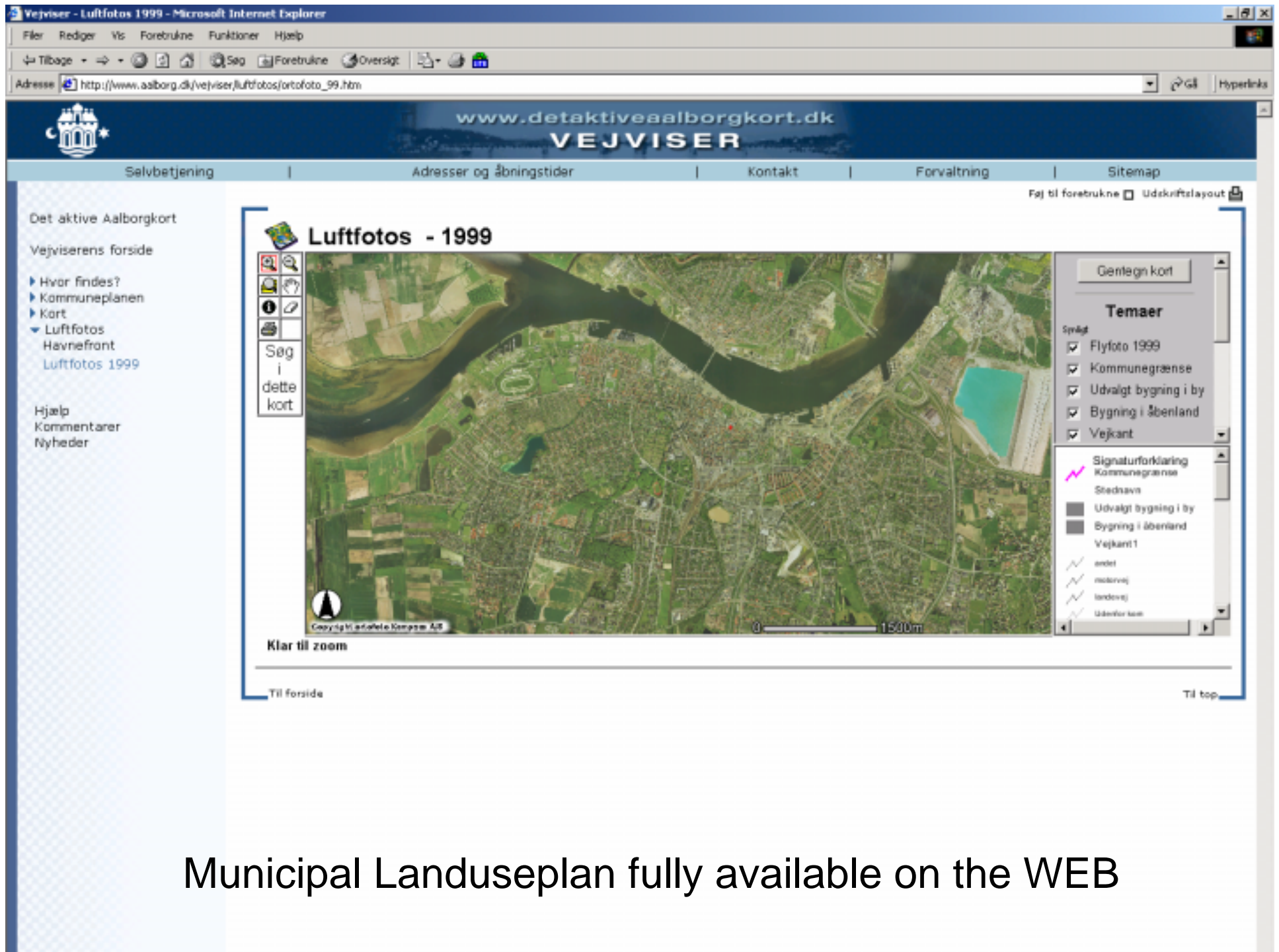
- A - Landbrugsområde
- B - Boligområde
- C - Centerområde
- D - Blandet bolig- og erhvervsområde
- F - Grøntstrukturer
- G - Gader og pladser
- H - Let erhvervsområde
- I - Industriområde

Panorer

Til forsiden Til top

Copyright © 1996-2000 ERS Inc.

Municipal Landuseplan fully available on the WEB




Municipal Landuseplan fully available on the WEB

Vejviser - Luftfotos 1999 - Microsoft Internet Explorer


Filer Rediger Vis Foretrukne Funktioner Hjælp

Tilbage → → → Søg Foretrukne Oversigt

Adresse http://www.aalborg.dk/vejviser/luftfotos/ortofoto_99.htm Gå Hyperlinks

 www.detaktiveaalborgkort.dk
VEJVISER

Selvbetjening | Adresser og åbningstider | Kontakt | Forvaltning | Sitemap


Føj til foretrukne Udskriftslayout 


Det aktive Aalborgkort

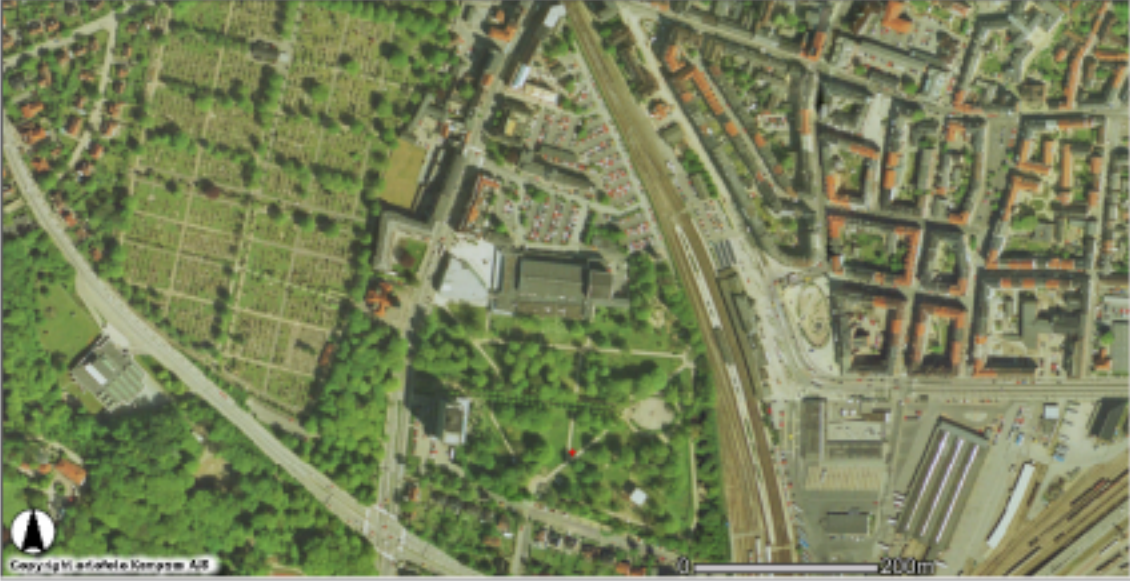
Vejviserens forsider

- ▶ Hvor findes?
- ▶ Kommuneplanen
- ▶ Kort
- ▼ Luftfotos
 - Havnefront
 - Luftfotos 1999

Hjælp
Kommentarer
Nyheder

 **Luftfotos - 1999**

 Søg i dette kort



Copyright © Aalborg Kommune A/S

Klar til zoom

Til forsiden Til top

Gentegn kort

Temaer


Syngt

- Flyfoto 1999
- Kommunegrænse

Et tip:
Zoom ind i kortet!

Signaturforklaring

Flyfoto 1999

 Kommunegrænse


Municipal Landuseplan fully available on the WEB

Vejviser - Luftfotos 1999 - Microsoft Internet Explorer


Filer Rediger Vis Foretrukne Funktioner Hjælp

Tilbage → → → Søg Foretrukne Oversigt

Adresse http://www.aalborg.dk/vejviser/luftfotos/ortofoto_99.htm Gå Hyperlinks

 www.defaktiveaalborgkort.dk
VEJVISER

Selvbetjening | Adresser og åbningstider | Kontakt | Forvaltning | Sitemap

Føj til foretrukne Udskriftslayout 


Det aktive Aalborgkort

Vejviserens forsider

- ▶ Hvor findes?
- ▶ Kommuneplanen
- ▶ Kort
- ▼ Luftfotos
 - Havnefront
 - Luftfotos 1999

Hjælp
Kommentarer
Nyheder

Luftfotos - 1999



Zoom ud

Til forsider

Til top

Gentegn kort


Temaer

Synligt

- Flyfoto 1999
- Kommunegrænse

Et tip:
Zoom ind i kortet!

Signaturforklaring

- Flyfoto 1999
-  Kommunegrænse

Municipal Landuseplan fully available on the WEB

3. Centre for 3D Geoinformation

- Partnership between University, industry (COWI and Informi GIS) and National Mapping Agency (KMS)
- Focus on "remodelling" spatial information to meet the challenge of working in 3D-spaces in full digital integrated environment



PURPOSE OF THE CENTRE FOR 3D GEOINFORMATION

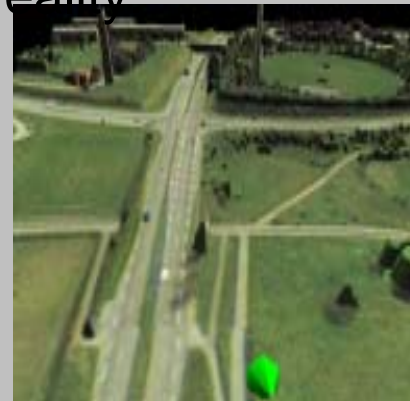
- knowledge and competence in creating 3D models of cities and landscapes

This will be done by:

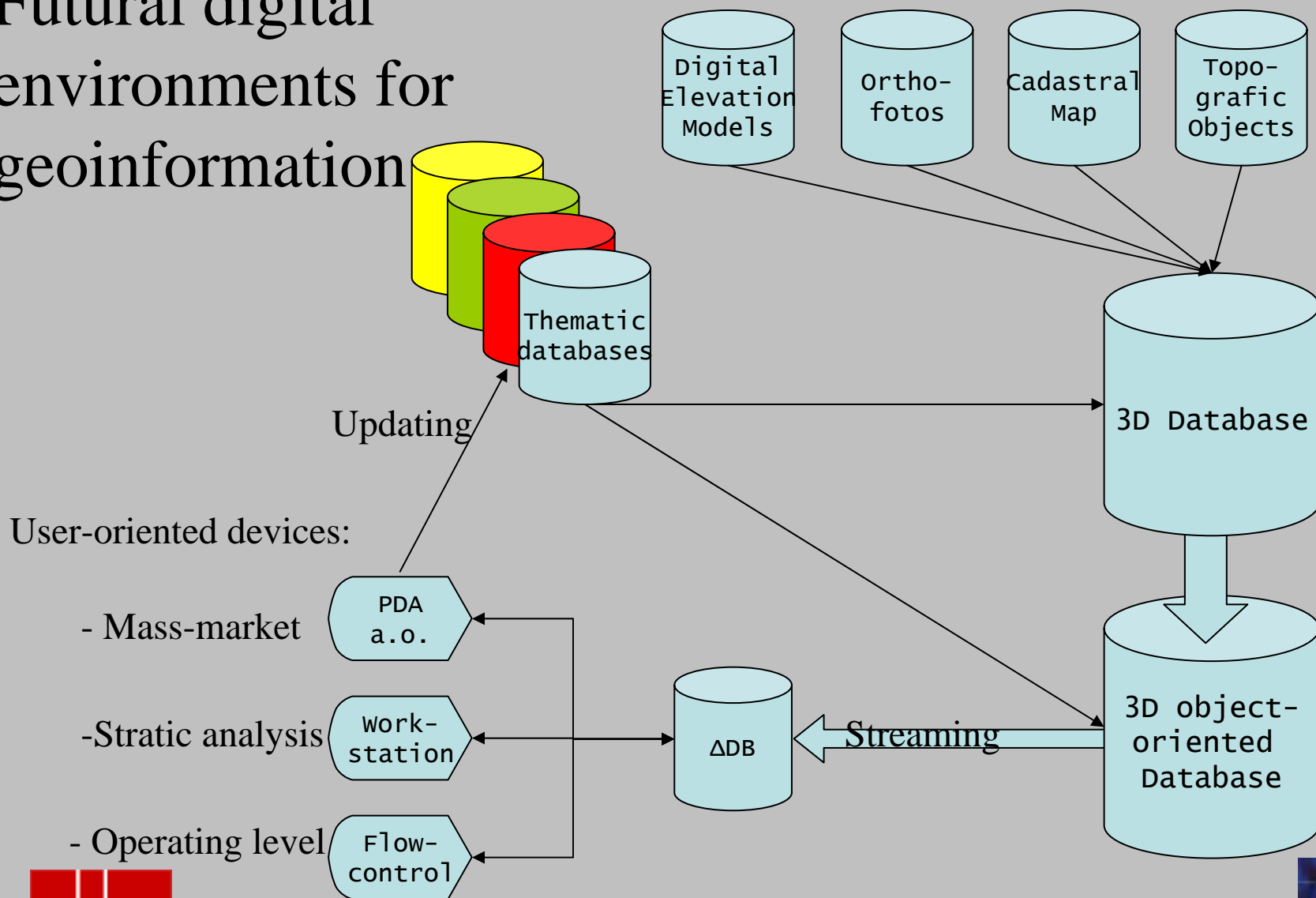
- Focus on VR and three-dimensional urban and rural models
- VR user interface for looking for position-fixed information in the northern part of Jutland
- creating a “geographical model” of North Jutland developing a basis for the use of a geographical communication on realtime monitoring geospatial databases
- forming the basis for future research and regional knowledge within location-based services and augmented reality



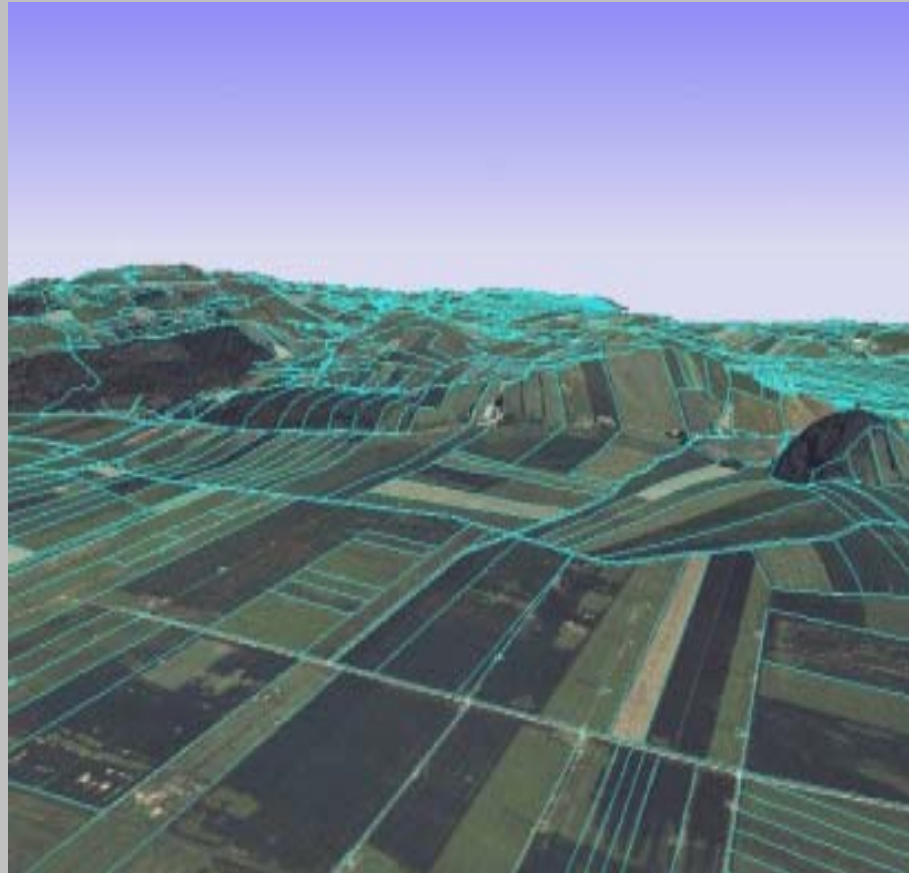
www.3dgi.dk



Futural digital environments for geoinformation



Navigating in in 3D-Augmented Reality – seeing "non-visible boarder lines"



www.3dgi.dk



Datamodel 1(3)

- alarming complexity
- not only be described through points, lines or polygons with well-defined mutual relations.
- When objects are to be described with a spatial geometry and representation, it does not only require some new thinking, especially when the objects are to be used in connection with a GIS.
- Experienced in spatial models in connection with 3D visualizations, 3D animations and latest virtual reality for several decades.
- Still an enormous jump from simple 3D modeling to a 3D model containing knowledge about itself and relations to its surroundings.



Datamodel 2(3)

- simplify the model, and make a choice about the detail level of the object description.
- it is relatively simple to take a position. If for example we take a building, we have to decide how many details we wish to include. Is every roof window or windbreak to be included?
- existing map products and registers, which among other things contain information about the spatial extent of the objects.
- The problem in using different sources of information may be often be that there is conflicting information – describing the object with different values.



Datamodel 3(3)

- special focus on spatial legal objects.
- This subject is for cadastral surveyors of great importance, because the technology is near to ready for modeling objects in real 3D.
- The 3D technologies based on Virtual Reality will made it possible to describe ownership to spatial legal object as there are understood in reality, where property rights always is related to three dimension. Ownership to land, buildings, easements, rights to pass (road) is all in three dimensions i in the real world.
- The challenge is not only to develop theoretical concepts for describing the model, but also develop procedures for object-oriented updating and real-time visualizations in virtual environments.



Actual ongoing research in 3DGI

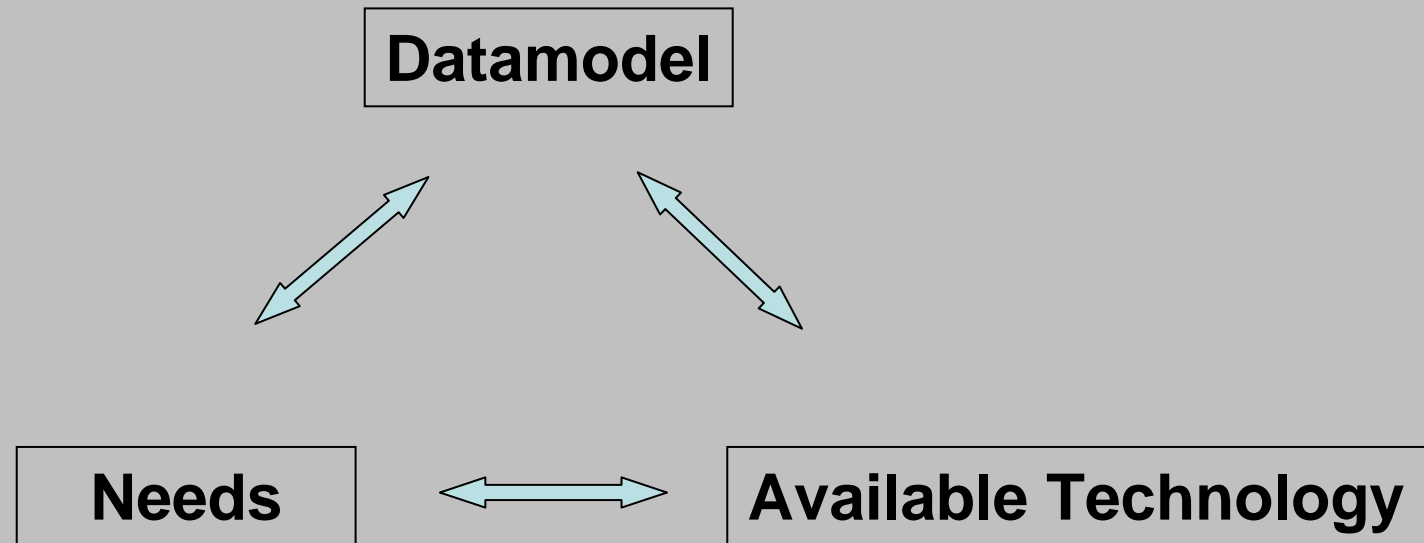
- Organized as a number of projects that cause prototypes, algorithms and documents for the final system structure, system.

The following are ongoing:

- Feature extraction from aerial scanning (LIDAR)
 - Organizing 3D object representation using XML-based standards
 - Data modeling and queries for 3D geographical data
 - 3D cadastre
 - Qualification of 3D geovisualization
 - Ground laser scanning and modeling 3D objects
 - Exchange of data between XML and RDBS
 - Landscape visualization in 3D and temporal analysis
- The coming year will give rise to further projects based on partnerships between research and companies in the private sector.



4. Global drivers effecting the GI (and FIG) community



Datamodel - Standardization



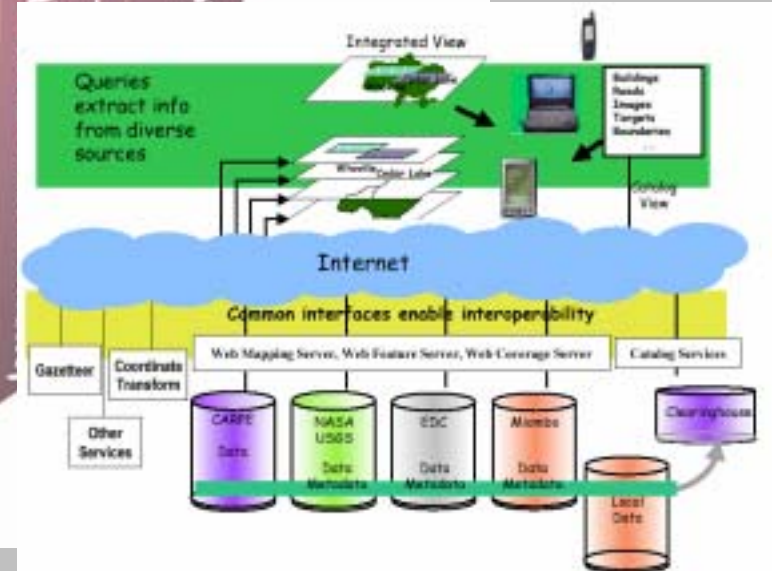
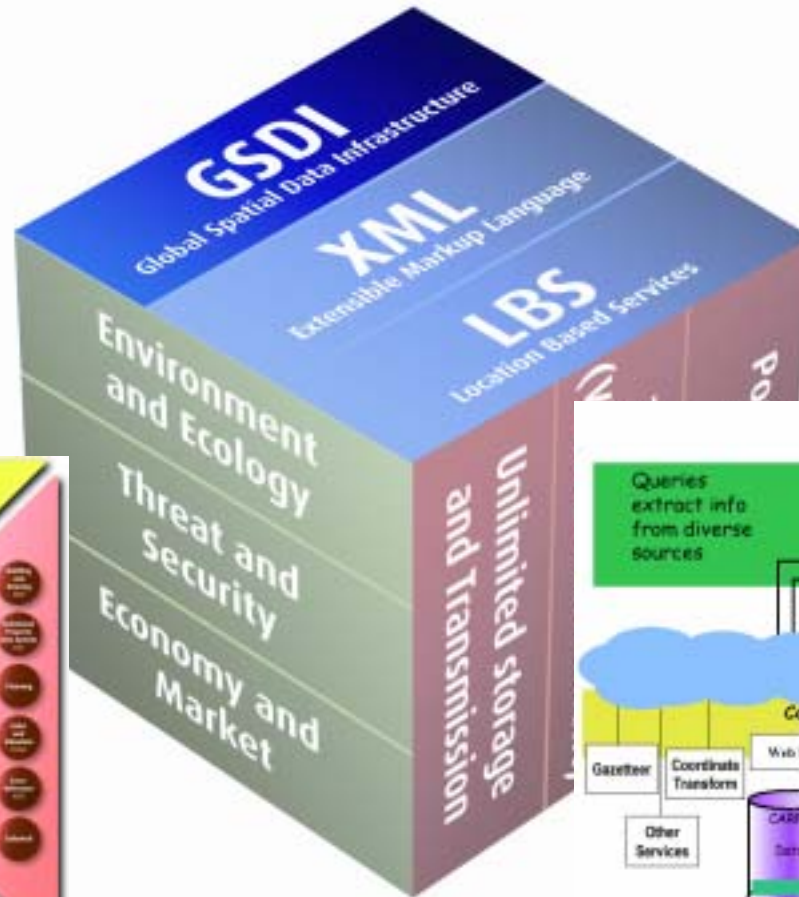
www.3dgi.dk

Global drivers effecting the GI (-FIG) commuty



GSDI
INSPIRE
NSDI

Datamodel - Standardization

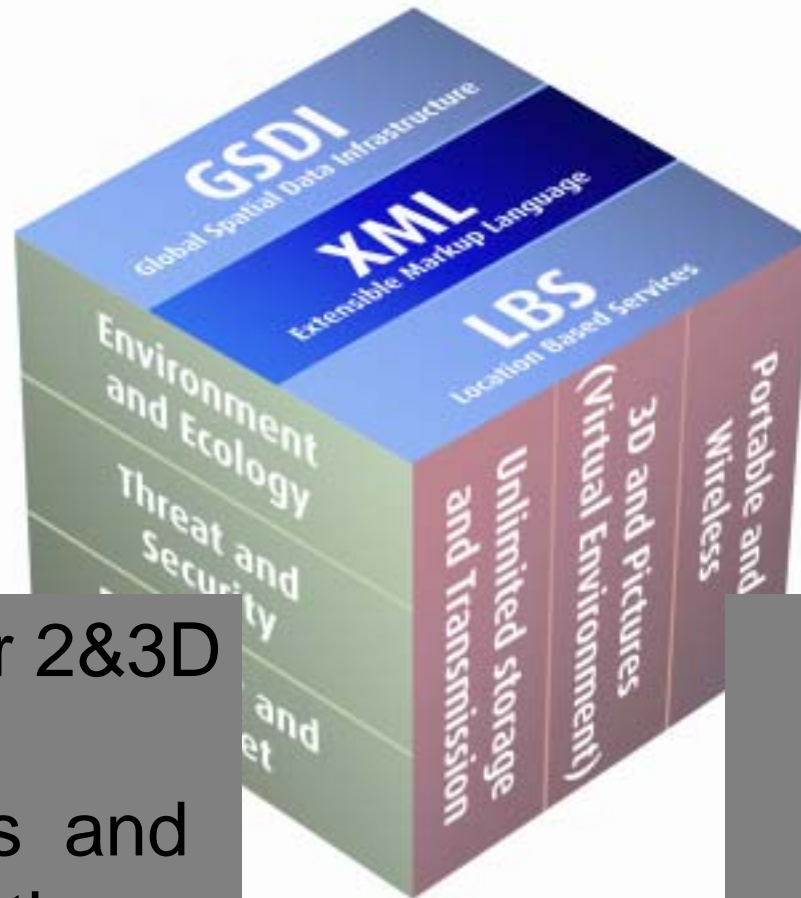


www.3dgi.dk

Global drivers effecting the GI (-FIG) commuty

Standards
for
Scalable
Vector
Graphics

Datamodel - Standardization



Standards for 2&3D
Virtual
Environments and
GeoVisualization

GMXML XML=
standard for
WEB-
communication

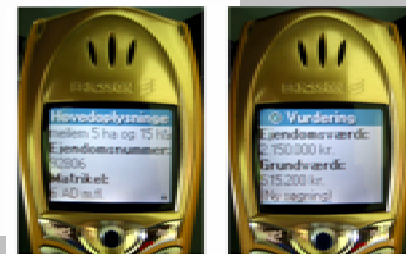


www.3dgi.dk

Global drivers effecting the GI (-FIG) community

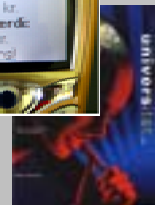


Datamodel - Standardization



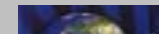
www.3dgi.dk

Global drivers effecting the GI (-FIG) commuty





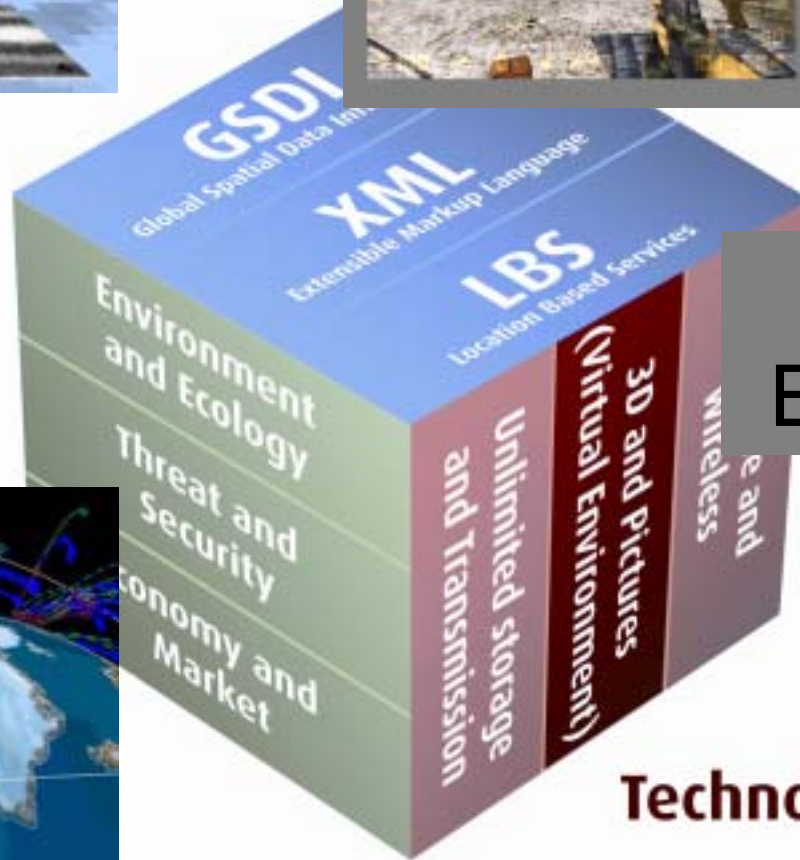
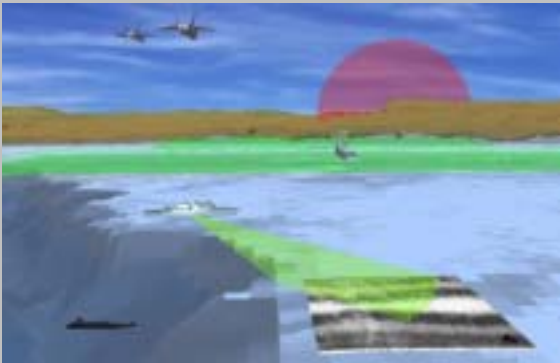
Pervasive computing
 Small Mobile
 Portable
 Embedded



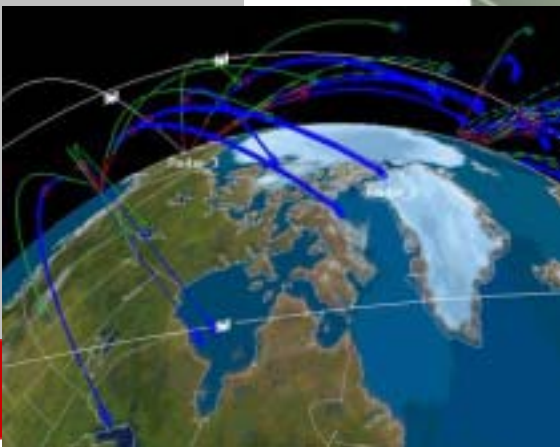
802.11g
 4.G
 5.G

www.3dgi.dk

Global drivers effecting the GI (-FIG) commuty



Defence
Entertainment



www.3dgi.dk

Global drivers effecting the GI (-FIG) commuty



Computers will be scalable, interoperable and networked – from portable to big servers

Speeds and Capacity thousands times faster and bigger within few years



Internet Protocol version 6 and more

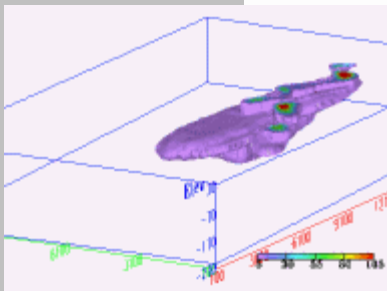
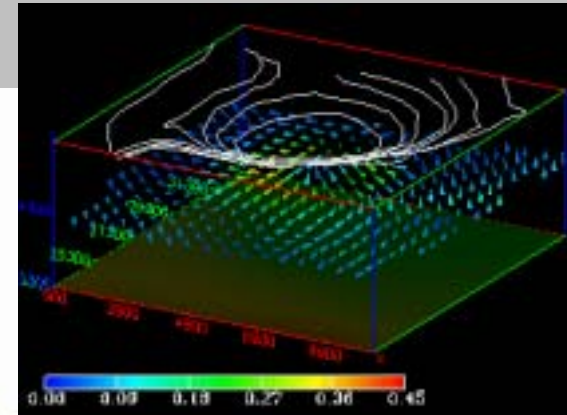


www.3dgi.dk

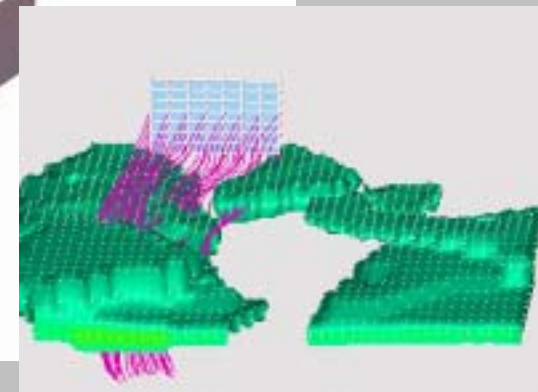
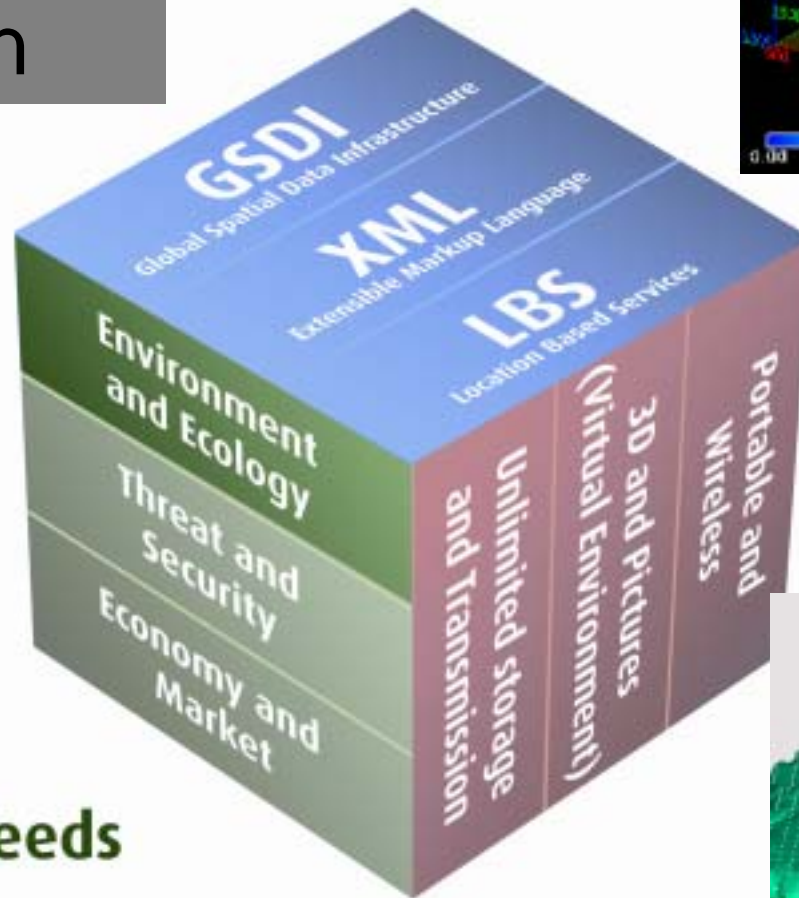
Global drivers effecting the GI (-FIG) community



Modelling and Dynamic 3D visualization



Needs

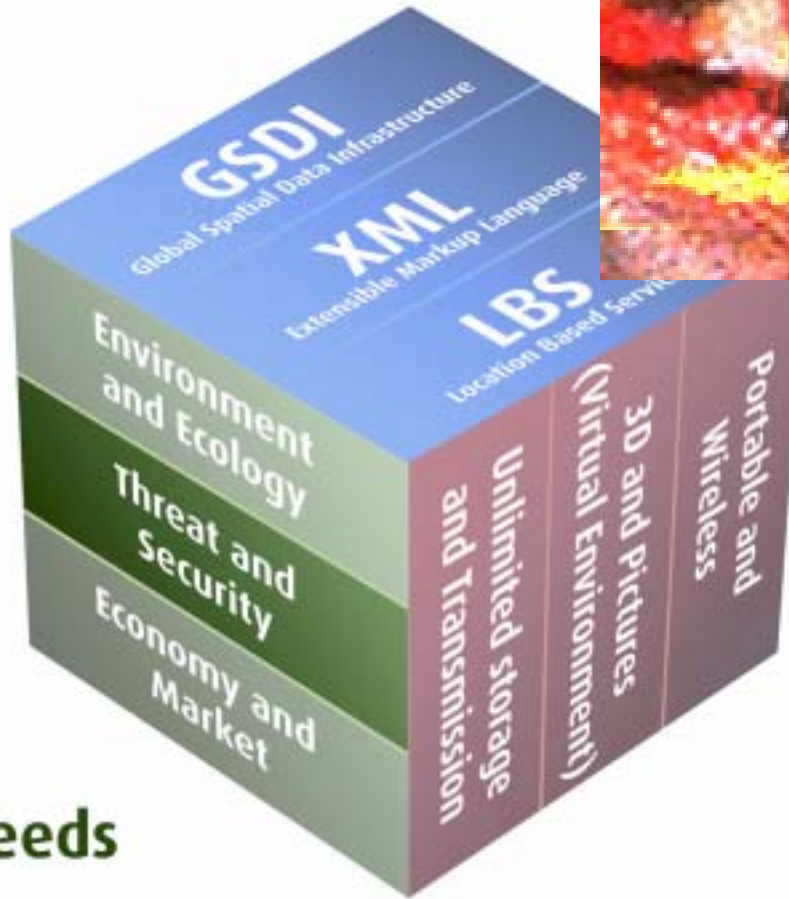


www.3dgi.dk

Global drivers effecting the GI (-FIG) commuty



Nature Risks,
Homeland
Security and
Intelligence

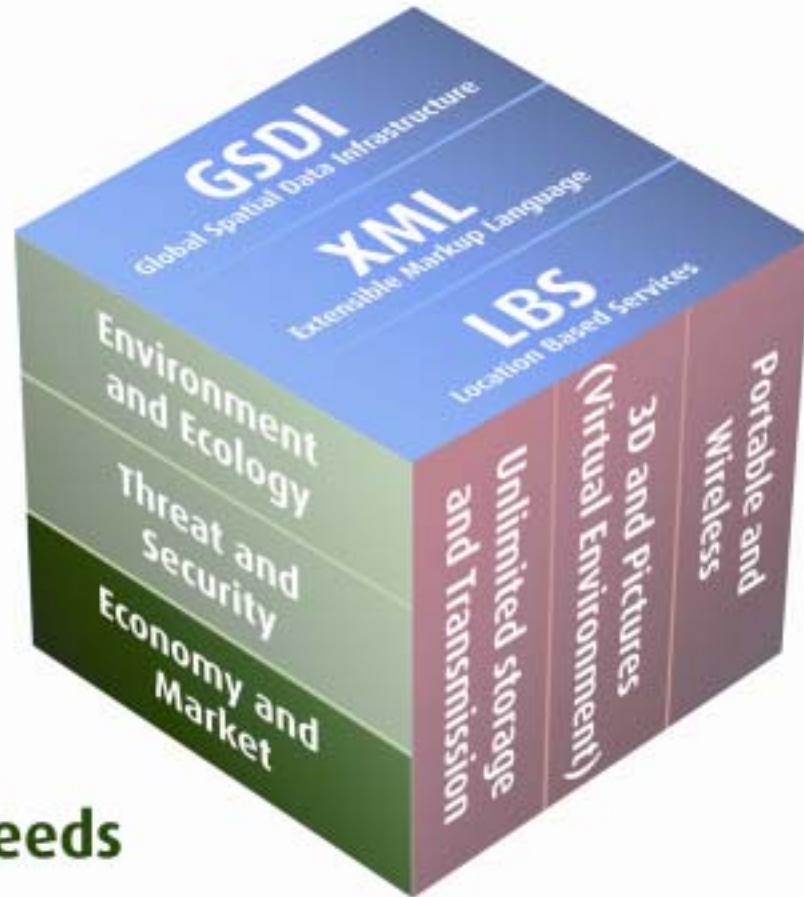
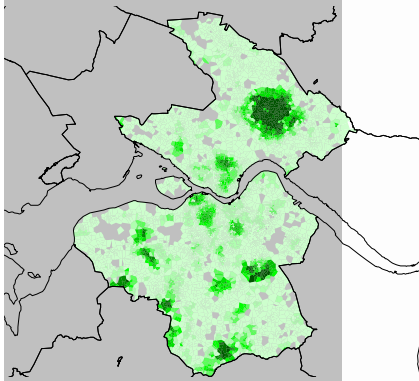


Needs



www.3dgi.dk

Global drivers effecting the GI (-FIG) commuty



Needs

**Modelling
Human
Activity**



www.3dgi.dk

Global drivers effecting the GI (-FIG) commuty

Datamodel - Standardization



Links:

Videnscenter for 3D GeoInformation (www.3dgi.dk)

Research Team GeoInformation og Medieteknologi (www.gim.dk) and

Researchcentre Forest & Landscape (www.fsl.dk)
and partners:

COWI (www.cowi.dk)

Kort- og Matrikelstyrelsen (www.kms.ds)

Informi GIS (www.informi.dk)

